

## Nev-R-Lube

**No need to pull the hubs to repack the bearings!**  
**No need to replace seals when you check the brakes!**  
**No more inner and outer bearings!**

### Pre-set Adjustments.

Ease of installation. Human error is virtually eliminated in bearing adjustment.

### Pre-Lubricated at the Bearing Factory.

Resistant to contamination.

### Sealed for Life.

No bearing maintenance. Increased durability and reliability.

### Lower maintenance cost.

5-year or 100,000 mile warranty against defects in material or workmanship.



Available in 35mm cartridge, 42mm cartridge and 50mm cartridge.  
 See pages A8 thru A17 and A32 thru A38 for specific application.

## Nev-R-Lube 6 Bolt, 5.5" Bolt Circle

- Fits Dexter 35MM Nev-R-Lube Axle
- Capacity of 1,750 lbs. per each
- Drum size: 10" x 2 1/4"



PART NO.	REF. NO.	DESCRIPTION
8-386-80UC3	118276	COMPLETE HUB & DRUM ASSEMBLY
8-386-80	118251	HUB & DRUM W/BEARING & RETAINER
31-72-3	130885	CARTRIDGE BEARING, 35MM X 64MM X 37MM
69-94	167845	SNAP RING, INNER BEARING RETAINER, 2.51" O.D.
69-96	167875	SNAP RING, OUTER RETAINER, .821" O.D.
21-39	155300	GREASE CAP, 2.75" O.D., DRIVE-IN
7-122	144600	DRIVE-IN STUD, 1/2" DIA. X 1-13/16" LONG
X1023R	140600	1/2" CONE WHEEL
92-2	167900	TORQUE INFORMATION DISC



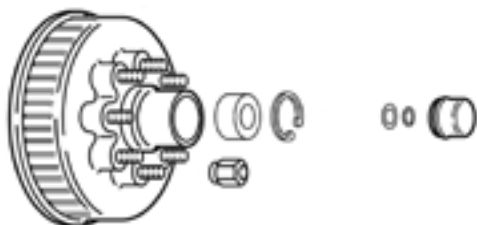
## Nev-R-Lube 6 Bolt, 5.5" Bolt Circle



- Fits Dexter 42MM Nev-R-Lube Axle
- Capacity of 3,000 lbs. per each
- Drum size: 12"x2"

PART NO.	REF. NO.	DESCRIPTION
8-388-80UC3	119526	COMPLETE HUB & DRUM ASSEMBLY
8-388-80	119501	HUB & DRUM W/BEARING & RETAINER
31-73-3	130900	CARTRIDGE BEARING, 42MM X 76MM X 39MM
69-95	167850	SNAP RING, INNER BEARING RETAINER, 3" O.D.
69-96	167875	SNAP RING, OUTER RETAINER, .821" O.D.
1609	152600	GREASE CAP, 3.125" O.D., DRIVE-IN
7-122	144600	DRIVE-IN STUD, 1/2" DIA. X 1-13/16" LONG
165995	145000	DRIVE-IN STUD, 1/2" DIA X 2-1/2" LONG
X1023R	140600	1/2" CONE WHEEL
92-2	167900	TORQUE INFORMATION DISC

## Nev-R-Lube 8 Bolt, 6.5" Bolt Circle



- Fits Dexter 50MM Nev-R-Lube Axle
- Capacity of 3,500 lbs. per each
- Drum size: 12"x2"

PART NO.	REF. NO.	DESCRIPTION
8-385-82UC3	119576	COMPLETE HUB & DRUM ASSEMBLY
8-385-82	119551	HUB & DRUM W/BEARING & RETAINER
31-71-3	130875	CARTRIDGE BEARING, 50MM X 84MM X 54MM
69-93	167840	SNAP RING, INNER BEARING RETAINER, 3.35" O.D.
69-96	167875	SNAP RING, OUTER RETAINER, .821" O.D.
75DC	153000	GREASE CAP, 3.355" O.D., DRIVE-IN
7-122	144600	DRIVE-IN STUD, 1/2" DIA. X 1-13/16" LONG
165995	145000	DRIVE-IN STUD, 1/2" DIA X 2-1/2" LONG
X1023R	140600	1/2" CONE WHEEL
92-2	167900	TORQUE INFORMATION DISC

## Nev-R-Lube 8 Bolt, 6.5" Bolt Circle



- Fits Dexter 50MM Nev-R-Lube Axle
- Capacity of 4,000 lbs. per each
- Drum size: 12 1/4" x 3 3/8"

PART NO.	REF. NO.	DESCRIPTION
8-389-81UC3	123178	COMPLETE HUB & DRUM ASSEMBLY
8-389-81	123176	HUB & DRUM W/BEARING & RETAINER
31-71-3	130875	CARTRIDGE BEARING, 50MM X 84MM X 54MM
69-93	167840	SNAP RING, INNER BEARING RETAINER, 3.35" O.D.
69-96	167875	SNAP RING, OUTER RETAINER, .821" O.D.
75DC	153000	GREASE CAP, 3.355" O.D., DRIVE-IN
7-132	145200	DRIVE-IN STUD, 9/16" DIAMETER
6-53	140800	9/16" CONE WHEEL NUT
92-2	167900	TORQUE INFORMATION DISC