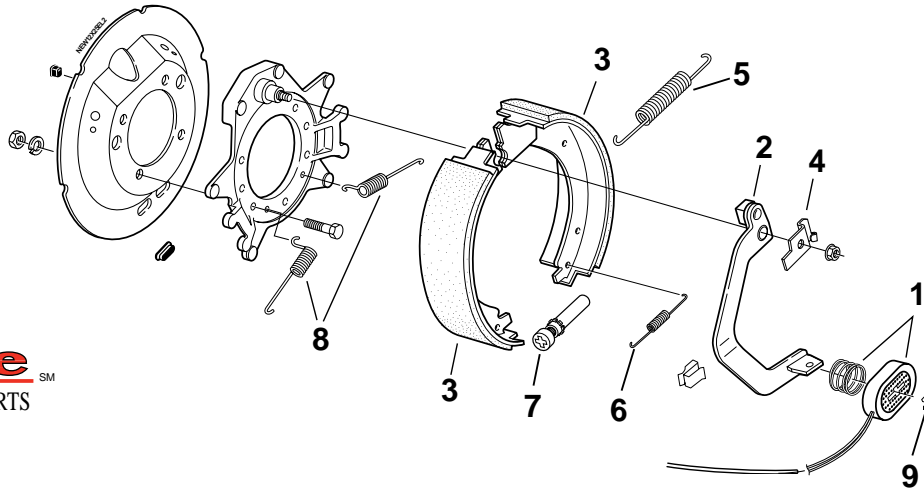


Dexter 12 1/4" x 2 1/2" Electric



BRAKE
ASSEMBLIES



Dexter 12 1/4" x 2 1/2" Electric Brake Assemblies

* Capacity: 7,200 lbs. per pair

* This brake was redesigned in May 2000. New design utilizes a cast backing plate.

| PART NO. | REF. NO. | DESCRIPTION |
|----------|----------|---|
| 23-369 | 185300 | RIGHT BRAKE, 9 BOLT, STAMPED BACKING PLATE (SHOWN IN PHOTO) |
| 23-370 | 185400 | LEFT BRAKE, 9 BOLT, STAMPED BACKING PLATE |
| 23-428 | 185410 | LEFT BRAKE, 4 BOLT, CAST BACKING PLATE |
| 23-429 | 185420 | RIGHT BRAKE, 4 BOLT, CAST BACKING PLATE |

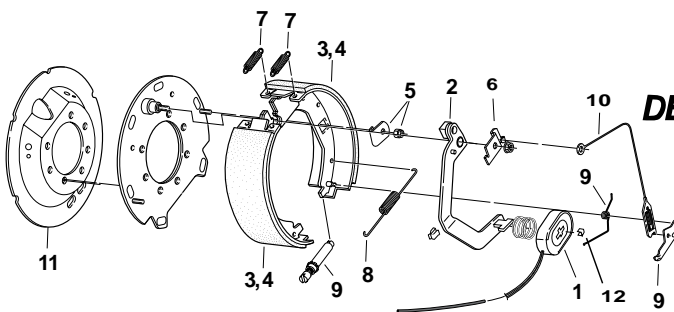
Replacement Parts

| PART NO. | REF. NO. | DESCRIPTION | ITEM |
|------------|----------|--|------|
| BP01-255 | 196650 | MAGNET KIT, OVAL (RED WIRE) | 1 |
| 47-124-5 | 202401 | ACTUATING ARM, LEFT HAND | 2 |
| 47-125-5 | 202501 | ACTUATING ARM, RIGHT HAND | N/S |
| BP04-235 | 208100 | SHOE & LINING (1 WHEEL), STAMPED BACKING PLATE | N/S |
| BP04-236 | 208110 | SHOE & LINING, CAST BACKING PLATE, LH | 3 |
| BP04-238 | 208120 | SHOE & LINING, CAST BACKING PLATE, RH | N/S |
| 71-455-1 | 215205 | ARM / SHOE RETAINER, LH | 4 |
| 71-455-2 | 215405 | ARM / SHOE RETAINER, RH | N/S |
| BP07-190 | 218000 | SHOE RETURN SPRING | 5 |
| K71-411-00 | 222905 | ADJUSTER & SPRING KIT | 6, 7 |
| BP07-185 | 217750 | SHOE CENTERING SPRING | 8 |
| BP19-005 | 236505 | MAGNET RETAINER CLIP, PKG OF 4 | 9 |



Dexter - 4 Bolt Flange - 12 1/4" x 3 3/8" Electric

- Capacity: 9,000 lbs. per pair
- In October 1989, the 9,000 lb. brake was changed from a 4 bolt to a 7 bolt. (See next page for 7 bolt brake.)
- September 1992, the magnet was upgraded to an oval design for increased efficiency and magnet life. The old style is no longer available.
- Redesigned with forward self-adjust feature in June of 1996.
- Redesigned with a cast backing plate in May of 2000. (Below)



| PART NO. | REF. NO. | DESCRIPTION | ITEM |
|----------|----------|---|------|
| BP01-265 | 196700 | MAGNET KIT, 8K OVAL (WHITE WIRE) | 1 |
| BP01-301 | 197410 | MAGNET KIT, 9K - 10K OVAL (YELLOW WIRE) | 1 |
| BP02-315 | 203300 | ACTUATING ARM, LEFT HAND | N/S |
| BP02-325 | 203500 | ACTUATING ARM, RIGHT HAND | N/S |
| BP02-327 | 203550 | ACTUATING ARM, LEFT HAND FOR FORWARD ADJUST | 2 |
| BP02-328 | 203560 | ACTUATING ARM, RIGHT HAND FOR FORWARD ADJUST | N/S |
| BP04-240 | 208200 | SHOE & LINING (1 WHEEL) LEFT HAND | 3 |
| BP04-250 | 208400 | SHOE & LINING (1 WHEEL) RIGHT HAND | 4 |
| BP06-240 | 214400 | SHOE HOLD DOWN KIT (1 WHEEL) | 5 |
| 71-455-1 | 215205 | ACTUATING ARM RETAINER, LEFT HAND | 6 |
| 71-455-2 | 215405 | ACTUATING ARM RETAINER, RIGHT HAND | 6 |
| BP07-225 | 218900 | SHOE RETURN SPRING SET (1 EA. GREEN & BLACK) | 7 |
| BP08-150 | 220900 | ADJUSTER SPRING | 8 |
| BP10-135 | 223700 | ADJUSTER, LEVER & SPRING, LEFT HAND | 9 |
| BP10-145 | 223900 | ADJUSTER, LEVER & SPRING, RIGHT HAND | 9 |
| BP13-020 | 225400 | ADJUSTER CABLE, 10.5" LONG | 10 |
| BP15-015 | 227700 | BRAKE DUST SHIELD METAL (1-PIECE) FOR DROP SPNDL, 4 BOLT 8K | 11 |
| BP19-005 | 236505 | MAGNET RETAINER CLIP, QTY 4 | 12 |



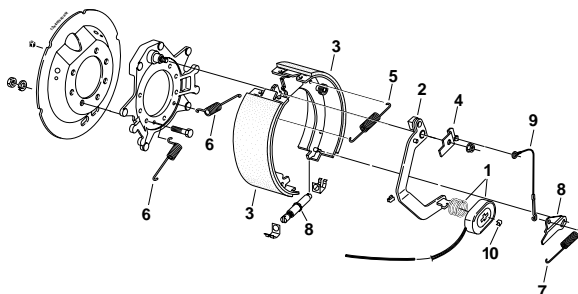
New



New



Old

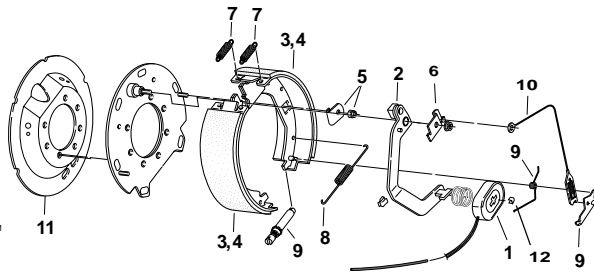


| PART NO. | REF. NO. | DESCRIPTION |
|----------|----------|--------------------------------------|
| 23-434 | 186110 | LEFT BRAKE, 4 BOLT |
| 23-435 | 186210 | RIGHT BRAKE, 4 BOLT (SHOWN IN PHOTO) |

| Replacement Parts | | | |
|-------------------|----------|--|------|
| PART NO. | REF. NO. | DESCRIPTION | ITEM |
| BP01-265 | 196700 | MAGNET KIT, 8K OVAL (WHITE WIRE) | 1 |
| BP02-327 | 203550 | ACTUATING ARM, LEFT HAND FOR FORWARD ADJUST | 2 |
| BP02-328 | 203560 | ACTUATING ARM, RIGHT HAND FOR FORWARD ADJUST | N/S |
| BP04-245 | 208300 | SHOE & LINING (1 WHEEL) LH | 3 |
| BP04-255 | 208500 | SHOE & LINING (1 WHEEL) RH | N/S |
| 71-455-1 | 215205 | ACT ARM/SHOE RETAINER, LH | 4 |
| 71-455-2 | 215405 | ACT ARM/SHOE RETAINER, RH | N/S |
| BP07-190 | 218000 | SHOE RETURN SPRING | 5 |
| BP07-195 | 218100 | SHOE CENTERING SPRING | 6 |
| BP08-155 | 220910 | ADJUSTER SPRING | 7 |
| BP10-136 | 223710 | ADJUSTER & LEVER, LH | 8 |
| BP10-146 | 223910 | ADJUSTER & LEVER, RH | N/S |
| BP13-022 | 225402 | ADJUSTER CABLE, 10" LONG | 9 |
| BP19-005 | 236505 | MAGNET RETAINER CLIP | 10 |



Dexter - 7 Bolt Flange 12 1/4" x 3 3/8" Electric



- Capacity: 10,000 lbs. per pair
- In October 1989, the 9,000 lb brake was changed from a 4 bolt to a 7 bolt.
- In September 1992, the magnet was upgraded to an oval design for increased efficiency and magnet life.
- Redesigned with forward adjust feature in June of 1996.
- Redesigned with cast backing plate in May of 2000. (See below)

BRAKE ASSEMBLIES

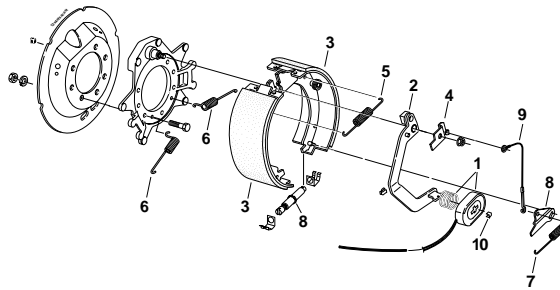
Replacement Parts Stamped Backing Plate

| PART NO. | REF. NO. | DESCRIPTION | ITEM |
|----------|----------|--|------|
| BP01-301 | 197410 | MAGNET KIT, 9K & 10K GD "NEW STYLE OVAL" (YELLOW WIRE) | 1 |
| BP02-315 | 203300 | ACTUATING ARM, LEFT HAND FOR NEW STYLE OVAL MAGNET | N/S |
| BP02-325 | 203500 | ACTUATING ARM, RIGHT HAND FOR NEW STYLE OVAL MAGNET | N/S |
| BP02-327 | 203550 | ACTUATING ARM, LEFT HAND FOR FORWARD ADJUST BRAKE | 2 |
| BP02-328 | 203560 | ACTUATING ARM, RIGHT HAND FOR FORWARD ADJUST BRAKE | N/S |
| BP04-240 | 208200 | SHOE & LINING (1 WHEEL) LEFT HAND | 3 |
| BP04-250 | 208400 | SHOE & LINING (1 WHEEL) RIGHT HAND | 4 |
| BP06-240 | 214400 | SHOE HOLD DOWN KIT (1 WHEEL) | 5 |
| 71-455-1 | 215205 | ACTUATING ARM RETAINER, LEFT HAND | 6 |
| 71-455-2 | 215405 | ACTUATING ARM RETAINER, RIGHT HAND | N/S |
| BP07-225 | 218900 | SHOE RETURN SPRING SET (1 EA. GREEN & BLACK) | 7 |
| BP08-150 | 220900 | ADJUSTER SPRING | 8 |
| BP10-135 | 223700 | ADJUSTER, LEVER & SPRING, LEFT HAND | 9 |
| BP10-145 | 223900 | ADJUSTER, LEVER & SPRING, RIGHT HAND | N/S |
| BP13-020 | 225400 | ADJUSTER CABLE | 10 |
| BP15-085 | 229100 | BRAKE DUST SHIELD METAL (1-PIECE) 7 BOLT | 11 |
| BP19-005 | 236505 | MAGNET RETAINER CLIP, QTY 4 | 12 |

New



Old



Brake Assemblies Cast Backing Plate

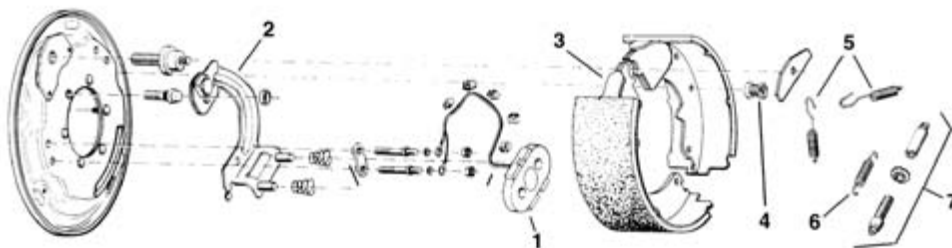
| PART NO. | REF. NO. | DESCRIPTION |
|----------|----------|--|
| 23-450 | 186235 | LEFT BRAKE, 9K & 10K GD, 7 BOLT (SHOWN IN PHOTO) |
| 23-451 | 186255 | RIGHT BRAKE, 9K & 10K GD, 7 BOLT |

Replacement Parts

| PART NO. | REF. NO. | DESCRIPTION | ITEM |
|----------|----------|---|------|
| BP01-301 | 197410 | MAGNET KIT, 9K & 10K GD, "NEW STYLE OVAL" (YELLOW WIRE) | 1 |
| BP02-327 | 203550 | ACTUATING ARM, LEFT HAND FOR FORWARD ADJUST BRAKE | 2 |
| BP02-328 | 203560 | ACTUATING ARM, RIGHT HAND FOR FORWARD ADJUST BRAKE | N/S |
| BP04-245 | 208300 | SHOE & LINING (1 WHEEL) LEFT HAND | 3 |
| BP04-255 | 208500 | SHOE & LINING (1 WHEEL) RIGHT HAND | N/S |
| 71-455-1 | 215205 | ARM/SHOE RETAINER, LEFT HAND | 4 |
| 71-455-2 | 215405 | ARM/SHOE RETAINER, RIGHT HAND | N/S |
| BP07-190 | 218000 | SHOE RETURN SPRING SET | 5 |
| BP07-195 | 218100 | SHOE CENTERING SPRING | 6 |
| BP08-155 | 220910 | ADJUSTER SPRING | 7 |
| BP10-136 | 223710 | ADJUSTER & LEVER, LEFT HAND | 8 |
| BP10-146 | 223910 | ADJUSTER & LEVER, RIGHT HAND | 8 |
| BP13-022 | 225402 | ADJUSTER CABLE | 9 |
| BP19-005 | 236505 | MAGNET RETAINER CLIP, QTY 4 | 10 |



Warner 12 1/4" x 3 1/2" Electric



Warner 12 1/4" x 3 1/2" Electric Brake Assemblies

* Capacity: 10,000 lbs. per pair

| PART NO. | REF. NO. | DESCRIPTION |
|----------|----------|-----------------------------|
| 1301-13 | 186400 | LEFT BRAKE (SHOWN IN PHOTO) |
| 1301-12 | 186600 | RIGHT BRAKE |

Replacement Parts

| PART NO. | REF. NO. | DESCRIPTION | ITEM |
|--------------|----------|---------------------------|------|
| BP01-270 | 196800 | MAGNET KIT | 1 |
| 1301-100-015 | 203601 | ACTUATING ARM, RIGHT HAND | 2 |
| 1301-100-016 | 203801 | ACTUATING ARM, LEFT HAND | N/S |
| BP04-280 | 209000 | SHOE & LINING (1 WHEEL) | 3 |
| 1301-100-007 | 215601 | SHOE HOLD DOWN SPRING | 4 |
| BP07-175 | 217700 | SHOE RETURN SPRINGS | 5 |
| BP08-120 | 220400 | ADJUSTER SPRING | 6 |
| BP10-080 | 222800 | ADJUSTER | 7 |



BRAKE ASSEMBLIES

Hayes/AL-KO 12 1/4" x 3 1/2" Electric



- Capacity: 12,000 lbs. per pair
- Fits: 9K through 12K Axles
- In 1987 the 10K brake was redesigned to use the "Ventilated Magnet"
- In 1989 the 12K brake was redesigned to use the "Ventilated Magnet"
- In 1995 the 9K brake was redesigned to use the "Ventilated Magnet"



Hayes/AL-KO 12 1/4" x 3 1/2" Electric Brake Assemblies

| PART NO. | REF. NO. | DESCRIPTION |
|----------|----------|-----------------------------|
| 10257 | 186700 | LEFT BRAKE (SHOWN IN PHOTO) |
| 10259 | 186900 | RIGHT BRAKE |

Replacement Parts

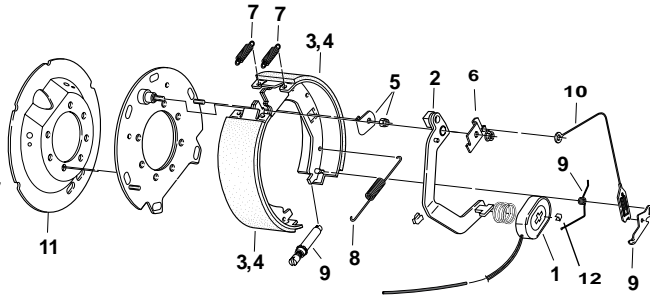
| PART NO. | REF. NO. | DESCRIPTION | ITEM |
|----------|----------|---|------|
| BP01-270 | 196800 | MAGNET KIT, 12K, BEFORE 1989 | N/S |
| BP01-285 | 197100 | VENT MAGNET, FITS 9K AFTER 94, 10K AFTER 87, 12K AFTER 89 | 1 |
| BP02-303 | 203025 | ACTUATING ARM, RIGHT HAND FOR VENT MAGNET | 2 |
| BP02-305 | 203050 | ACTUATING ARM, LEFT HAND FOR VENT MAGNET | N/S |
| BP04-290 | 209200 | SHOE & LINING (1 WHEEL) | 3 |
| BP06-195 | 213500 | SHOE HOLD DOWN KIT (1 WHEEL) | 4 |
| 568239 | 221601 | ADJUSTER SPRING | 6 |
| BP10-110 | 223200 | ADJUSTER, RIGHT HAND | 7 |
| BP10-120 | 223400 | ADJUSTER, LEFT HAND | N/S |
| BP13-040 | 225800 | ADJUSTER CABLE | 9 |



New

Old

Dexter 12 1/4" x 4" Electric



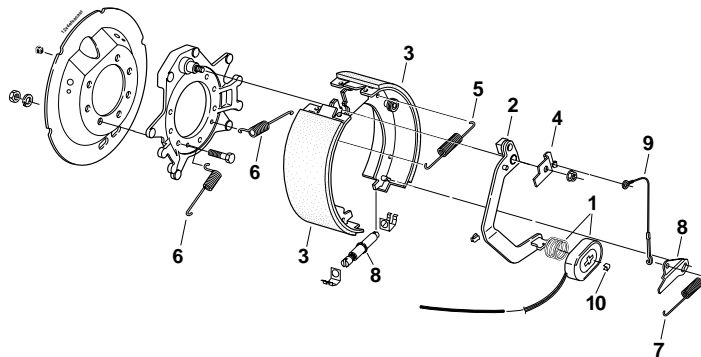
- Capacity: 10,000 lbs. per pair
- In September 1992 the magnet was upgraded to an oval design for increased efficiency & magnet life.
- Brake was redesigned with forward self-adjust feature in June of 1996.
- Brake was redesigned with cast backing plate in May of 2000. (See below.)

BRAKE ASSEMBLIES



Replacement Parts Stamped Backing Plate (Parts Only)

| PART NO. | REF. NO. | DESCRIPTION | ITEM |
|----------|----------|---|------|
| BP01-301 | 197410 | MAGNET KIT, 10K NEW STYLE OVAL (YELLOW WIRE) | 1 |
| BP02-315 | 203300 | ACTUATING ARM, LEFT HAND FOR NEW STYLE OVAL MAGNET | N/S |
| BP02-325 | 203500 | ACTUATING ARM, RIGHT HAND FOR NEW STYLE OVAL MAGNET | N/S |
| BP02-327 | 203550 | ACTUATING ARM, LEFT HAND FOR FORWARD ADJUST BRAKES | 2 |
| BP02-328 | 203560 | ACTUATING ARM, RIGHT HAND FOR FORWARD ADJUST BRAKES | N/S |
| BP04-320 | 209600 | SHOE & LINING (1 WHEEL) LEFT HAND | 3 |
| BP04-330 | 209800 | SHOE & LINING (1 WHEEL) RIGHT HAND | 4 |
| BP06-240 | 214400 | SHOE HOLD DOWN KIT (1 WHEEL) | 5 |
| 71-455-1 | 215205 | ACTUATING ARM RETAINER, LEFT HAND | 6 |
| 71-455-2 | 215405 | ACTUATING ARM RETAINER, RIGHT HAND | N/S |
| BP07-225 | 218900 | SHOE RETURN SPRING SET (1 EACH GREEN & BLACK) | 7 |
| BP08-150 | 220900 | ADJUSTER SPRING | 8 |
| BP10-135 | 223700 | ADJUSTER, LEVER & SPRING, LEFT HAND | 9 |
| BP10-145 | 223900 | ADJUSTER, LEVER & SPRING, RIGHT HAND | N/S |
| BP13-020 | 225400 | ADJUSTER CABLE | 10 |
| BP15-150 | 230300 | BRAKE DUST SHIELD METAL (1 PIECE) 7 BOLT | 11 |
| BP19-005 | 236505 | MAGNET RETAINER CLIP, QTY 4 | N/S |



Electric Brake Assemblies Cast Backing Plate

* Capacity: 10,000 lbs. per pair

| PART NO. | REF. NO. | DESCRIPTION |
|----------|----------|-------------------------------------|
| 23-438 | 188060 | LEFT BRAKE, 7 BOLT (SHOWN IN PHOTO) |
| 23-439 | 188080 | RIGHT BRAKE, 7 BOLT |

Replacement Parts

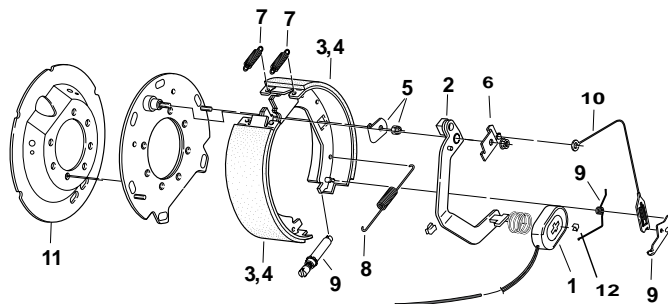
| PART NO. | REF. NO. | DESCRIPTION | ITEM |
|----------|----------|---|------|
| BP01-301 | 197410 | MAGNET KIT, 10K, NEW STYLE OVAL (YELLOW WIRE) | 1 |
| BP02-327 | 203550 | ACTUATING ARM, LEFT HAND FOR FORWARD ADJUST BRAKES | 2 |
| BP02-328 | 203560 | ACTUATING ARM, RIGHT HAND FOR FORWARD ADJUST BRAKES | N/S |
| BP04-325 | 209610 | SHOE & LINING (1 WHEEL) LEFT HAND | 3 |
| BP04-335 | 209810 | SHOE & LINING (1 WHEEL) RIGHT HAND | N/S |
| 71-455-1 | 215205 | ARM/SHOE RETAINER, LEFT HAND | 4 |
| 71-455-2 | 215405 | ARM/SHOE RETAINER, RIGHT HAND | N/S |
| BP07-190 | 218000 | SHOE RETURN SPRING | 5 |
| BP07-195 | 218100 | SHOE CENTERING SPRING | 6 |
| BP08-155 | 220910 | ADJUSTER SPRING | 7 |
| BP10-136 | 223710 | ADJUSTER, LEVER & SPRING, LEFT HAND | 8 |
| BP10-146 | 223910 | ADJUSTER, LEVER & SPRING, RIGHT HAND | N/S |
| BP13-022 | 225402 | ADJUSTER CABLE | 9 |
| BP19-005 | 236505 | MAGNET RETAINER CLIP, QTY 4 | 10 |



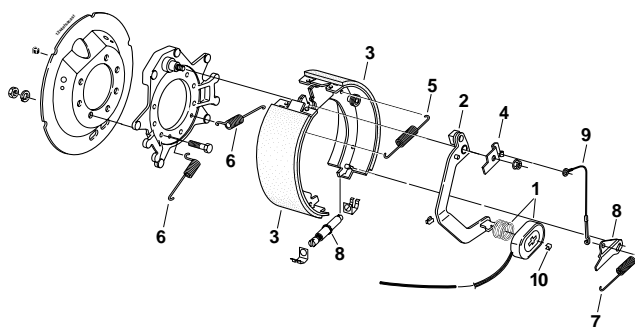
Dexter 12 1/4" x 5" Electric

Replacement Parts

- Capacity: 12,000 lbs. & 15,000 lbs. per pair
- In September 1992, the magnet was upgraded to an oval design for increased efficiency and magnet life. The old style is no longer available.
- Redesigned with forward self-adjust feature in June of 1996.
- Redesigned with a cast backing plate in May of 2000. (See below)



| PART NO. | REF. NO. | DESCRIPTION | ITEM |
|-----------|----------|--|------|
| BP01-311 | 197625 | MAGNET KIT, 15K NEW STYLE OVAL (BLUE WIRE) | 1 |
| 47-123-36 | 204230 | ACTUATING ARM, LEFT HAND | 2 |
| 47-123-35 | 204235 | ACTUATING ARM, RIGHT HAND | N/S |
| BP04-360 | 210400 | SHOE & LINING (1 WHEEL) LEFT HAND | 3 |
| BP04-370 | 210600 | SHOE & LINING (1 WHEEL) RIGHT HAND | 4 |
| BP06-240 | 214400 | SHOE HOLD DOWN KIT (ONE WHEEL) | 5 |
| 71-455-1 | 215205 | ACTUATING ARM RETAINER, LEFT HAND | 6 |
| 71-455-2 | 215405 | ACTUATING ARM RETAINER, RIGHT HAND | 6 |
| BP07-225 | 218900 | SHOE RETURN SPRING (1 EACH GREEN & BLACK) | 7 |
| BP08-150 | 220900 | ADJUSTER SPRING | 8 |
| BP10-135 | 223700 | ADJUSTER, LEVER & SPRING, LEFT HAND | 9 |
| BP10-145 | 223900 | ADJUSTER, LEVER & SPRING, RIGHT HAND | 9 |
| BP13-020 | 225400 | ADJUSTER CABLE | 10 |
| BP15-190 | 231100 | BRAKE DUST SHIELD, METAL, (1 PIECE) 7 BOLT | 11 |
| BP19-005 | 236505 | MAGNET RETAINER CLIP, QTY 4 | N/S |



| Electric Brake Assemblies Cast Backing Plate | | |
|--|----------|---|
| PART NO. | REF. NO. | DESCRIPTION |
| 23-442 | 188445 | LEFT BRAKE, 7 BOLT, 12K (BLACK WIRE) SHOWN IN PHOTO |
| 23-443 | 188455 | RIGHT BRAKE, 7 BOLT, 12K (BLACK WIRE) |
| 23-446 | 188830 | LEFT BRAKE, 7 BOLT 15K (BLUE WIRE) |
| 23-447 | 188840 | RIGHT BRAKE, 7 BOLT, 15K (BLUE WIRE) |

| Replacement Parts | | | |
|-------------------|----------|---|------|
| PART NO. | REF. NO. | DESCRIPTION | ITEM |
| BP01-306 | 197430 | MAGNET KIT, 12K NEW STYLE OVAL (BLACK WIRE) | 1 |
| BP01-311 | 197625 | MAGNET KIT, 15K NEW STYLE OVAL (BLUE WIRE) | 1 |
| 47-123-36 | 204230 | ACTUATING ARM, LEFT HAND | 2 |
| 47-123-35 | 204235 | ACTUATING ARM, RIGHT HAND | N/S |
| BP04-365 | 210410 | SHOE & LINING (1 WHEEL) LEFT HAND | 3 |
| BP04-375 | 210610 | SHOE & LINING (1 WHEEL) RIGHT HAND | N/S |
| 71-455-1 | 215205 | ARM/SHOE RETAINER, LEFT HAND | 4 |
| 71-455-2 | 215405 | ARM/SHOE RETAINER, RIGHT HAND | N/S |
| BP07-190 | 218000 | SHOE RETURN SPRING | 5 |
| BP07-195 | 218100 | SHOE CENTERING SPRING | 6 |
| BP08-155 | 220910 | ADJUSTER SPRING | 7 |
| BP10-136 | 223710 | ADJUSTER, LEVER & SPRING, LEFT HAND | 8 |
| BP10-146 | 223910 | ADJUSTER, LEVER & SPRING, RIGHT HAND | N/S |
| BP13-022 | 225402 | ADJUSTER CABLE | 9 |
| BP19-005 | 236505 | MAGNET RETAINER CLIP, QTY 4 | 10 |



New



Old

