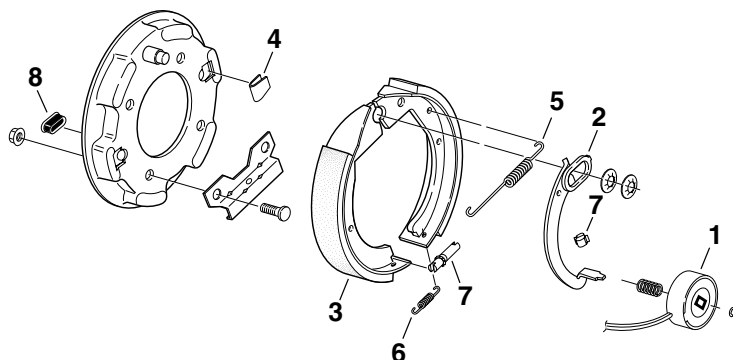


Dexter 7" x 1 1/4" Electric



BRAKE
ASSEMBLIES

Dexter 7" x 1 1/4" Electric Brake Assemblies

* Capacity: 2,000 lbs. per pair

PART NO.	REF. NO.	DESCRIPTION
23-47	180800	LEFT BRAKE (SHOWN IN PHOTO)
23-48	181000	RIGHT BRAKE

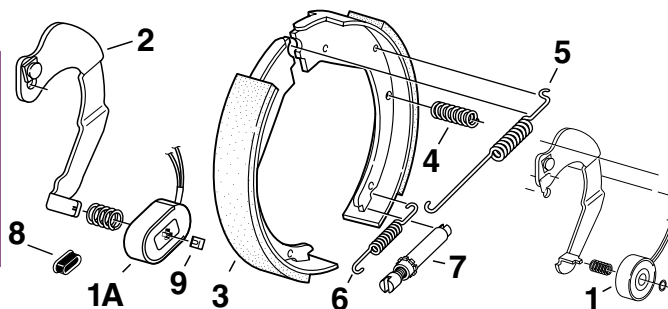
Replacement Parts

PART NO.	REF. NO.	DESCRIPTION	ITEM
BP01-068	193580	MAGNET KIT	1
K71-325	197805	ACTUATING ARM, LEFT HAND	2
K71-326	198025	ACTUATING ARM, RIGHT HAND	2
BP04-040	204600	SHOE & LINING (1 WHEEL)	3
K71-361-00	236501	BRAKE SPRING SET (1 WHEEL)	4, 5, 6
BP10-040	222000	ADJUSTER	7
BP10-220	225100	ADJUSTER DUST PLUG, PKG OF 4	8
BP19-001	236502	MAGNET RETAINER CLIP FOR OVAL MAGNET, PKG OF 4	N/A



Dexter 10" x 1 1/2" Electric

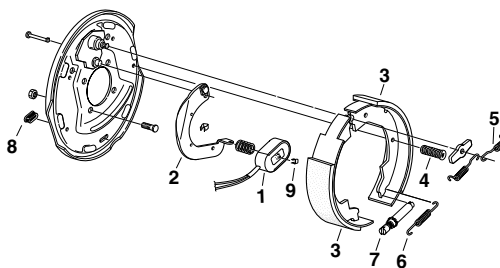
- Since this brake is welded on Dexter's 2.8K axle, only the following replacement parts are available.
- Axles manufactured after 9/99 will accept 10" x 2 1/4" brakes.



PART NO.	REF. NO.	DESCRIPTION	ITEM
BP01-068	193580	MAGNET KIT, ROUND	1
BP01-064	193510	MAGNET KIT, OVAL	1A
K71-327	198411	ACTUATING ARM, LEFT HAND, FOR OVAL MAGNET	2
K71-328	198421	ACTUATING ARM, RIGHT HAND, FOR OVAL MAGNET	2
BP04-065	204850	SHOE & LINING (1 WHEEL)	3
K71-362-00	236503	BRAKE SPRING SET (1 WHEEL)	4, 5, 6
BP10-060	222400	ADJUSTER	7
BP10-220	225100	ADJUSTER DUST PLUG, PKG OF 4	8
BP19-001	236502	MAGNET RETAINER CLIP FOR OVAL MAGNET, PKG OF 4	9



Dexter 10" x 2 1/4" Electric



BRAKE ASSEMBLIES



Dexter 10" x 2 1/4" Electric Brake Assemblies

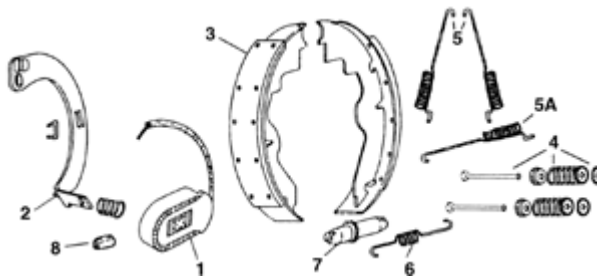
* Capacity: 3,500 and 4,400 lbs. per pair

PART NO.	REF. NO.	DESCRIPTION
23-26	181600	LEFT BRAKE (SHOWN IN PHOTO) 3.5K
23-27	181800	RIGHT BRAKE 3.5K
EB01-100	188860	LEFT BRAKE W/ HARDWARE, PKGD 3.5K
EB01-105	188865	RIGHT BRAKE W/ HARDWARE, PKGD 3.5K
23-454	182700	LEFT BRAKE, 10" X 2.25", DEXTER 4.4K PER PAIR
23-455	182750	RIGHT BRAKE, 10" X 2.25", DEXTER 4.4K PER PAIR

Replacement Parts

PART NO.	REF. NO.	DESCRIPTION	ITEM
BP01-110	194000	MAGNET KIT, 3.5K	1
BP01-115	194050	MAGNET KIT (GREEN WIRE), GENUINE DEXTER W/ PROTECTIVE WIRE SLEEVE, 3.5K	1
BP01-185	195050	MAGNET KIT (WHITE WIRE) 4.4K	1
BP02-170	199800	ACTUATING ARM, LEFT HAND	2
BP02-180	200000	ACTUATING ARM, RIGHT HAND	2
BP04-090	205200	SHOE & LINING (1 WHEEL) 3.5K	3
K71-672	205600	SHOE & LINING (1 WHEEL) 4.4K	3
BP06-120	212500	SHOE HOLD DOWN SPRINGS	4
BP07-105	216625	SHOE RETURN SPRINGS (QTY 2)	5
BP08-070	220000	ADJUSTER SPRINGS	6
BP10-060	222400	ADJUSTER	7
BP10-220	225100	ADJUSTER DUST PLUG, PKG OF 4	8
BP19-001	236502	MAGNET RETAINER CLIP FOR OVAL MAGNET, PKG OF 4	9

Hayes/AL-KO 10" x 2 1/4" Electric



- Capacity: 3,500 lbs. per pair
- In late 1987, brake was redesigned to use oval style magnet, replacing round magnet. Old style magnets and replacement parts are available, complete assemblies are not.

Hayes/AL-KO 10" x 2 1/4" Electric Brake Assemblies

PART NO.	REF. NO.	DESCRIPTION
60202803	182300	LEFT BRAKE (SHOWN IN PHOTO)
60202703	182350	RIGHT BRAKE

Replacement Parts

PART NO.	REF. NO.	DESCRIPTION	ITEM
BP01-090	193800	MAGNET KIT (OLD STYLE)	N/S
BP01-110	194000	MAGNET KIT	1
BP04-100	205400	SHOE & LINING (1 WHEEL)	3
BP06-120	212500	SHOE HOLD DOWN SPRINGS	4
BP07-105	216625	SHOE RETURN SPRING, DUAL RETURN, PKG OF 2	5
BP07-110	216650	SHOE RETURN SPRING, SINGLE RETURN	5A
BP08-070	220000	ADJUSTER SPRING	6
BP10-060	222400	ADJUSTER	7
BP10-220	225100	ADJUSTER DUST PLUG, PKG OF 4	8
BP19-001	236502	MAGNET RETAINER CLIP FOR OVAL MAGNET, PKG OF 4	N/S

New



Old

