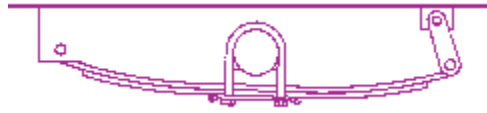




Suspensions

Single Axle Hanger Kits 1.75" Double Eye Springs (2,000 - 7,000 lb. Axles).....	D-2	Redline Packaged U-Bolts	D-12
Single Axle Hanger Kit, 1.75" & 2" Slipper Springs (2,000 - 8,000 lb. Axles).....	D-2	U-Bolt Nuts.....	D-13
Tandem Axle Hanger Kits, 1.75" Double Eye Springs (2,000 - 7,000 lb. Axles)	D-3	U-Bolt Axle Plates	D-13
Tandem Axle Hanger Kits, 2.00" Slipper Springs (3,500 - 8,000 lb. Axles).....	D-4	Shackle Straps	D-13
Triple Axle Hanger Kits, 1.75" Double Eye Springs (2,000-7,000 lb. Axles).....	D-5	Redline Packaged Shackle Straps.....	D-13
Triple Axle Hanger Kits, 2.00" Double Eye Springs (3,500-8,000 lb. Axles).....	D-5	Hanger for "WT" Series Springs.....	D-14
Dexter Axle Hanger Kits, 2.00" Slipper Springs (9,000 lb. Axles).....	D-6	Hangers for Double Eye Springs.....	D-14
Dexter Axle Hanger Kits, 2.50" Slipper Springs, 3/4" Rubber Bushed Eye (10,000 lb. General Duty Axles).....	D-6	Hangers for 2" Slipper Springs	D-14
Axle Hanger Kits, 2.50" Slipper Springs, 7/8" Eye (10,000 lb. General Duty Axles).....	D-7	Hangers for 2 1/2" Slipper Springs	D-14
Dexter Axle Hanger Kits, 3.00" Slipper Springs (10,000 lb. thru 15,000 lb. Heavy Duty Axles).....	D-7	Hangers for 3" Slipper Springs	D-15
Dual Wheel Hanger Location Chart.....	D-8	Straight Equalizers.....	D-15
9,000-15,000 lb. Axle Spring Hanger Reference.....	D-8	Tall Triangular Equalizer.....	D-15
Hanger Location Chart.....	D-9	Curved Equalizers	D-15
Double Eye Springs.....	D-10	Short Curved Equalizer	D-15
Slipper Springs.....	D-10	Equalizers for 2" Slipper Springs.....	D-15 & D-17
Suspension Bushings.....	D-11	E-Z Flex Heavy Duty Rubber Suspension System.....	D-16
Redline Packaged Bushings.....	D-11	Equalizers for 2 1/2" Slipper Springs.....	D-17
Spring Center Tie Bolts.....	D-11	Equalizers for 3" Slipper Springs.....	D-17
Replacement U-Bolts - Square End.....	D-11	Equalizers for Hayes 2 1/2" Slipper Springs.....	D-18
Replacement U-Bolts - Round End.....	D-12	Cotter Pins and Grease Zerks.....	D-18
U-Bolt Kits.....	D-12	Popular Suspension Bolts with Nuts	D-18
		Redline Packaged Bolts and Nuts	D-18
		Suspension Bolts.....	D-19
		Suspension Nuts.....	D-19
		Hutch Heavy Duty Suspensions.....	D-20
		Ridewell Air-Ride Trailer Suspensions.....	D-21
		Red Rider Air Ride Suspension	D-22
		Dexter Air Flex Air Ride Suspension	D-23
		RideRite / SportRite Air Helper Springs	D-24

Single Axle Hanger Kit, 1.75" Double Eye Springs (2,000 - 7,000 lb. Axles)



SUSPENSIONS

HANGER KIT CONTENTS						
Hanger Kit Part No.		APS1	APS2	APS3	APS4	APS5
Hanger Kit Ref. No.		025800	025810	025825	025850	026000
PART NO.	DESCRIPTION					
HANGERS						
115917	FRONT HANGER, 1 1/2" TALL	2	2	2	-	-
28-5	FRONT HANGER, 3 1/4" TALL	-	-	-	2	2
30-20	REAR HANGER W/STEEL BUSHING	2	-	-	-	2
93003-3X	REAR HANGR, NO BUSHING	-	2	2	2	-
SHACKLE STRAPS						
115052	2 5/8" LONG	-	4	-	-	-
115208	3 1/8" LONG	4	-	4	4	4
BOLTS & NUTS						
9163B	SHACKLE BOLT, 9/16" X 3"	6	6	6	6	6
916DLN	9/16" HEX LOCK NUT	6	6	6	6	6

Single Axle Hanger Kit, 1.75" & 2" Slipper Springs (2,000 - 8,000 lb. Axles)



HANGER KIT CONTENTS			
Hanger Kit Part No.		APS3SE	APS6SE
Hanger Kit Ref. No.		026300	026400
PART NO.	DESCRIPTION		
HANGERS			
115917	FRONT HANGER, 1 1/2" TALL	2	-
721584	FRONT HANGER, 3 3/4" TALL	-	2
115706S	REAR HANGER	2	-
721585	REAR HANGER	-	2
BOLTS & NUTS			
9163B	SHACKLE BOLT, 9/16" X 3"	2	-
91635B	SHACKLE BOLT, 9/16" X 3 1/2"	-	4
916DLN	9/16" HEX LOCK NUT	2	4

Hanger Locations and Specifications, pages D-8 & D-9. Replacement parts start on page D-11.

Tandem Axle Hanger Kits, 1.75" Double Eye Springs (2,000 - 7,000 lb. Axles)



HANGER KIT CONTENTS

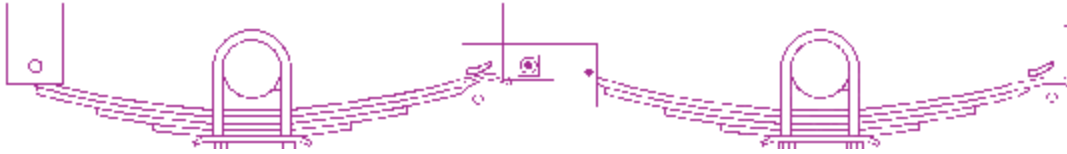
Hanger Kit Part No.		APT1	APT3	APT3HD	APT4	APT5	APT7	APT8	APT9	H248*	AP233*
Hanger Kit Ref. No.		026600	026800	026815	027000	027200	027210	027220	027590	027800	027600
PART NO.	DESCRIPTION										
HANGERS											
115917	1 1/2" TALL	-	4	-	-	-	-	-	-	-	-
115918	2 1/2" TALL	4	2	4	-	-	4	4	6	-	-
28-5	3 1/4" TALL	-	-	-	4	6	2	-	-	4	-
29-31	3 5/8" TALL	-	-	-	-	-	-	-	-	2	-
E4139	4 1/4" TALL	-	-	-	-	-	-	2	-	-	-
115919	5 7/16" TALL (3/4" BOLT)	2	-	2	2	-	-	-	-	-	-
EQUALIZERS											
A2251B3	8" STRAIGHT, 3/4" CENTER, 9/16" END HOLES	2	-	-	-	-	-	-	-	-	-
A2252CB	7 3/4" CURVED, ALL 9/16" HOLES	-	2	-	-	2	2	2	2	-	-
A2252CB34	7 3/4" CURVED, 3/4" CENTER, 9/16" END HOLES	-	-	2	-	-	-	-	-	-	-
220AIT3B	6 1/4" CURVED, 3/4" CENTER, 9/16" END HOLES	-	-	-	2	-	-	-	-	-	-
13-104-2	5 5/8" CURVED, ALL 9/16" HOLES	-	-	-	-	-	-	-	-	-	2
SHACKLE STRAPS											
18-11	2 1/4" LONG	-	-	-	-	-	-	-	-	-	8
115052	2 5/8" LONG	8	8	8	8	8	8	8	8	-	-
BOLTS & NUTS											
9163B	SHACKLE BOLT, 9/16" X 3"	12	14	12	12	14	14	14	14	-	14
916DLN	9/16" HEX LOCK NUT	12	14	12	12	14	14	14	14	-	14
126A1LN	WET EQUALIZER BOLT, 3/4" X 3 1/2"	2	-	2	2	-	-	-	-	-	-
165093	3/4" CASTLE NUT	2	-	2	2	-	-	-	-	-	-
165649	COTTER PIN, 2 1/4"	2	-	2	2	-	-	-	-	-	-
1610	GREASE ZERK 1/8" MPT	2	-	2	2	-	-	-	-	-	-

SUSPENSIONS

* Use H248 in combination with AP233 for complete hanger kit

Hanger Locations and Specifications, pages D-8 & D-9. Replacement parts start on page D-11.

Tandem Axle Hanger Kits, 2.00" Slipper Springs (3,500 - 8,000 lb. Axles)



SUSPENSIONS

		HANGER KIT CONTENTS						
		APT6SE	APT6SE-GS	APT6SE-36	H202*	H238*	AP202*	AP216*
		028600	028607	028610	028400	028500	028000	028200
PART NO.	DESCRIPTION							
HANGERS								
721584	FRONT HANGER, 3 3/4" TALL	2	2	2	-	-	-	-
721585	REAR HANGER, 5 1/16" TALL	2	2	2	-	-	-	-
721586	CENTER HANGER, 3 3/8" TALL	2	2	2	-	-	-	-
28-1	FRONT HANGER, 4 1/4" TALL	-	-	-	2	-	-	-
29-1	CENTER HANGER, 3 1/2" TALL	-	-	-	2	-	-	-
30-28	REAR HANGER, 5 1/4" TALL	-	-	-	2	-	-	-
28-9-1	FRONT HANGER, 5" TALL	-	-	-	-	2	-	-
29-5-1	CENTER HANGER, 4 1/2" TALL	-	-	-	-	2	-	-
30-6-1	REAR HANGER, 6 3/8" TALL	-	-	-	-	2	-	-
EQUALIZERS								
E5541	12" OAL, HEAVY DUTY	2	-	-	-	-	-	-
E4541	12" OAL, GENERAL SERVICE	-	2	-	-	-	-	-
13-4	"SWAN-SHAPED", 33" A/C WHEN USED W/3T3 SPRINGS	-	-	-	-	-	2	-
13-44	13 1/8" OAL, 36" A/C WHEN USED W/3T3 SPRINGS	-	-	2	-	-	-	2
BOLTS & NUTS								
7-7	SPRING KEEPER BOLT, 5/16" X 3 1/4" -	-	-	4	-	-	4	4
6-11	5/16" HEX LOCK NUT	-	-	4	-	-	4	4
91635B	SHACKLE BOLT, 9/16" X 3 1/2"	8	8	4	-	-	4	4
916DLN	9/16" HEX LOCK NUT	8	8	4	-	-	4	4
7-1-1	WET EQUALIZER BOLT, 7/8" X 4 1/2" -	-	-	2	-	-	2	2
7845B	EQUALIZER BOLT, 7/8" X 4 11/16"	2	2	-	-	-	-	-
78CN	7/8" CASTLE NUT FOR 7845B	2	2	-	-	-	-	-
6-111	7/8" HEX LOCK NUT FOR 7-1-1	-	-	2	-	-	2	2
165649	COTTER PIN, 2 1/4" FOR 7845B	2	2	-	-	-	-	-

* Use H202 or H238 in combination with AP202 or AP216 for complete hanger kit
Pre-boxed combinations of "AP202-H202" & "AP216-H238" are available as shown below. Contact branch customer service for details.

Combination Kits

Hangers and attaching parts are packaged in the same box for your convenience

PART NO.	REF. NO.	DESCRIPTION
AP202-H202	028100	BOXED KIT CONTAINS H202 HANGERS & AP202 ATTACHING PARTS
AP216-H238	028220	BOXED KIT CONTAINS H238 HANGERS & AP216 ATTACHING PARTS

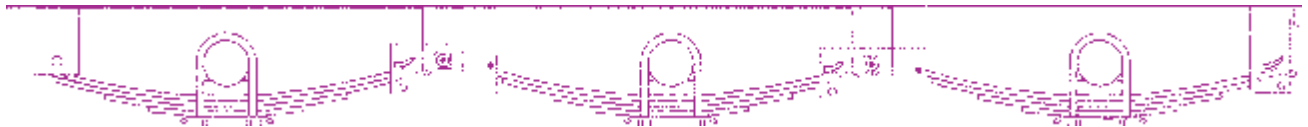
Hanger Locations and Specifications, pages D-8 & D-9. Replacement parts start on page D-11.

Triple Axle Hanger Kits, 1.75" Double Eye Springs (2,000 - 7,000 lb. Axles)



HANGER KIT CONTENTS				
Hanger Kit Part No.		APTT1	APTT3	APTT5
Hanger Kit Ref. No.		028800	029000	029200
PART NO.	DESCRIPTION			
HANGERS				
115917	1 1/2" TALL	-	4	-
115918	2 1/2" TALL	4	4	-
28-5	3 1/4" TALL	-	-	8
115919	5 7/16" TALL (3/4" BOLT)	4	-	-
EQUALIZERS				
A2251B3	8" STRAIGHT, 3/4" CENTER, 9/16" END HOLES	4	-	-
A2252CB	7 3/4" CURVED, ALL 9/16" HOLES	-	4	4
SHACKLE STRAPS				
115052	2 5/8" LONG	16	16	16
BOLTS & NUTS				
9163B	SHACKLE BOLT, 9/16" X 3"	20	24	24
916DLN	9/16" HEX LOCK NUT	20	24	24
126A1LN	WET EQUALIZER BOLT, 3/4" X 3 1/2"	4	-	-
165093	3/4" CASTLE NUT	4	-	-
165649	COTTER PIN, 2 1/4"	4	-	-
1610	GREASE ZERK, 1/8" MPT	4	-	-

Triple Axle Hanger Kits, 2.00" Slipper Springs (3,500 - 8,000 lb. Axles)



HANGER KIT CONTENTS					
Hanger Kit Part No.		APTT6SE	H302*	AP302*	AP316*
Hanger Kit Ref. No.		029400	029350	029250	029300
PART NO.	DESCRIPTION				
HANGERS					
721584	FRONT HANGER, 3 3/4" TALL	2	-	-	-
721585	REAR HANGER, 5 1/16" TALL	2	-	-	-
721586	CENTER HANGER, 3 3/8" TALL	4	-	-	-
28-1	FRONT HANGER, 4 1/4" TALL	-	2	-	-
29-1	CENTER HANGER, 3 1/2" TALL	-	4	-	-
30-28	REAR HANGER, 5 1/4" TALL	-	2	-	-
EQUALIZERS					
E5541	12" OAL	2	-	-	-
13-4	"SWAN-SHAPED", 33" A/C WHEN USED W/3T3 SPRINGS	-	-	4	-
13-44	13 1/8" OAL, 36" A/C WHEN USED W/3T3 SPRINGS	-	-	-	4
BOLTS & NUTS					
7-7	SPRING KEEPER BOLT, 5/16" X 3 1/4"	-	-	6	6
6-11	5/16" HEX LOCK NUT	-	-	6	6
91635B	SHACKLE BOLT, 9/16" X 3 1/2"	12	-	6	6
916DLN	9/16" HEX LOCK NUT	12	-	6	6
7-1-1	WET EQUALIZER BOLT, 7/8" X 4 1/2"	-	-	4	4
7845B	EQUALIZER BOLT, 7/8" X 4 11/16"	4	-	-	-
78CN	7/8" CASTLE NUT FOR 7845B	4	-	-	-
6-111	7/8" HEX LOCK NUT FOR 7-1-1	-	-	4	4
165649	COTTER PIN, 2 1/4" FOR 7845B	4	-	-	-

* Use H302 in combination with AP302 or AP316 for complete hanger kit

Hanger Locations and Specifications, pages D-8 & D-9. Replacement parts start on page D-11.

Dexter Axle Hanger Kits, 2.00" Slipper Springs (9,000 lb. Axles)



HANGER KIT CONTENTS

Hanger Kit Part No.		HAP-105-00*	HAP-205-01**	HAP-205-02**	HAP-205-03**
Hanger Kit Ref. No.		030420	030440	030460	030480
PART NO.	DESCRIPTION				
HANGERS					
28-68-4	FRONT HANGER, 5" TALL 5/8" BOLT HOLE	2	-	-	-
30-68-1	REAR HANGER, 6 3/8" TALL, 5/16" BOLT HOLE	2	-	-	-
29-39-4	CENTER HANGER, 4 1/2" TALL, 1" BOLT HOLE	-	2	2	2
EQUALIZERS					
13-117-03	38" AXLE SPACING	-	2	-	-
13-118-03	42 1/4" AXLE SPACING	-	-	2	-
13-119-03	48 1/2" AXLE SPACING	-	-	-	2
BOLTS & NUTS					
7-7	SPRING KEEPER BOLT, 5/16" X 3 1/4"	2	2	2	2
6-11	5/16" HEX LOCK NUT	2	2	2	2
7-181	SPRING EYE BOLT, 5/8" X 4 1/2"	2	2	2	2
6-38LN	5/8" HEX LOCK NUT	2	2	2	2
7-182	EQUALIZER BOLT, 1" X 5"	-	2	2	2
6-112	1" HEX LOCK NUT	-	2	2	2

* Complete single axle hanger kit.

** Use HAP-105-00 in combination with HAP-205-01, HAP-205-02, or HAP-205-03 for complete tandem axle hanger kit (2ea HAP-205-xx for Tri-Axle applications).

Dexter Axle Hanger Kits, 2.50" Slipper Springs, 3/4" Rubber Bushed Eye (10,000 lb. General Duty Axles)



HANGER KIT CONTENTS

Hanger Kit Part No.		HAP-158-00*	HAP-258-01**	HAP-258-02**	HAP-258-03**
Hanger Kit Ref. No.		033510	033515	033520	033525
PART NO.	DESCRIPTION				
HANGERS					
28-74-2	FRT HANGER, 5 1/4" TALL, 3/4" BOLT HOLE	2	-	-	-
30-61-1	REAR HANGER, 4 1/2" TALL, 5/16" BOLT HOLE	2	-	-	-
29-42-2	CENTER HANGER, 4 1/2" TALL, 1" BOLT HOLE	-	2	2	2
EQUALIZERS					
13-139-2	EQUALIZER, 38" AXLE SPACING	-	2	-	-
13-140-3	EQUALIZER, 42 1/4" AXLE SPACING	-	-	2	-
13-141-3	EQUALIZER, 48 1/2" AXLE SPACING	-	-	-	2
BOLTS & NUTS					
7-264	SPRING EYE BOLT, 3/4" X 4 1/2"	2	2	2	2
6-113	3/4" HEX LOCK NUT	2	2	2	2
7-169	EQUALIZER BOLT, 1" X 5 1/4"	-	2	2	2
6-112	1" HEX LOCK NUT	-	2	2	2

* Complete single axle hanger kit.

** Use HAP-158-00 in combination with HAP-258-01, HAP-258-02, or HAP-258-03 for complete tandem axle hanger kit (2ea HAP-258-xx for Tri-Axle applications).

Hanger Locations and Specifications, pages D-8 & D-9. Replacement parts start on page D-11.

Axle Hanger Kits, 2.50" Slipper Springs, 7/8" Eye (10,000 lb. General Duty Axles)



HANGER KIT CONTENTS				
Hanger Kit Part No. Hanger Kit Ref. No.		10GDH-K157* 032700	10GDH-K257-2** 033300	10GDH-K257-3** 033501
PART NO.	DESCRIPTION			
HANGERS				
10GDH-FRTLH	LH FRT HANGER, 5 1/4" TALL, 7/8" BOLT HOLE	1	-	-
10GDH-FRTRH	RH FRT HANGER, 5 1/4" TALL, 7/8" BOLT HOLE	1	-	-
10GDH-REAR	REAR HANGER, 4 1/2" TALL, 5/16" BOLT HOLE	2	-	-
10GDH-CTR	CENTER HANGER, 4 1/2" TALL, 1" BOLT HOLE	-	2	2
EQUALIZERS				
10GDH-EQ42LH	LH EQUALIZER, 42 1/4" AXLE SPACING	-	1	-
10GDH-EQ42RH	RH EQUALIZER, 42 1/4" AXLE SPACING	-	1	-
10GDH-EQ48LH	LH EQUALIZER, 48 1/2" AXLE SPACING	-	-	1
10GDH-EQ48RH	RH EQUALIZER, 48 1/2" AXLE SPACING	-	-	1
BOLTS & NUTS				
7-260-2	SPRING EYE BOLT W/ZERK, 7/8" X 4 1/2"	2	2	2
6-111	7/8" HEX LOCK NUT	2	2	2
7-136-2	EQUALIZER BOLT W/ZERK, 1" X 5 1/4"	-	2	2
6-112	1" HEX LOCK NUT	-	2	2

* Complete single axle hanger kit.

** Use 10GDH-K157 in combination with 10GDH-K257-2 or 10GDH-K257-3 for complete tandem axle hanger kit (2ea 10GDH-K257-x for Tri-Axle applications).

SUSPENSIONS

Dexter Axle Hanger Kits, 3.00" Slipper Springs (10,000 lb. thru 15,000 lb. Heavy Duty Axles)



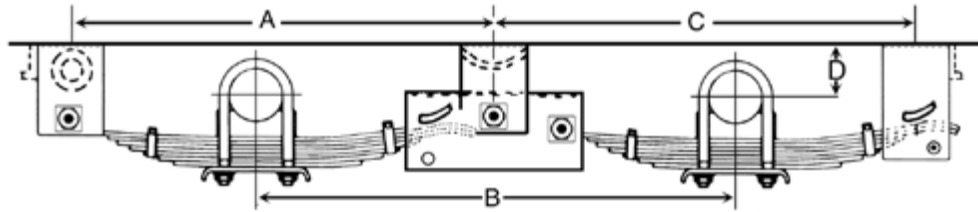
HANGER KIT CONTENTS					
Hanger Kit Part No. Hanger Kit Ref. No.		HAP-103-00* 041620	HAP-203-01** 041640	HAP-203-02** 041660	HAP-203-03** 041680
PART NO.	DESCRIPTION				
HANGERS					
28-67-4	LH FRT HANGER, 6 1/4" TALL, 1" BOLT HOLE	2	-	-	-
30-66-1	REAR HANGER, 7 11/16" TALL, 1/2" BOLT HOLE	2	-	-	-
29-37-4	CENTER HANGER, 6 1/2" TALL, 1 1/8" BOLT HOLE	-	2	2	2
EQUALIZERS					
13-107-7LH	LH, 38" AXLE SPACING	-	1	-	-
13-107-8RH	RH, 38" AXLE SPACING	-	1	-	-
13-108-3LH	LH, 42 1/4" AXLE SPACING	-	-	1	-
13-108-4RH	RH, 42 1/4" AXLE SPACING	-	-	1	-
13-109-3LH	LH, 48 1/2" AXLE SPACING	-	-	-	1
13-109-4RH	RH, 48 1/2" AXLE SPACING	-	-	-	1
BOLTS & NUTS					
7-95	SPRING KEEPER BOLT, 1/2" X 4 1/2"	2	2	2	2
6-46	1/2" HEX LOCK NUT	2	2	2	2
7-169	SPRING EYE BOLT, 1" X 5 1/2"	2	2	2	2
6-112	1" HEX LOCK NUT	2	2	2	2
7-170	EQUALIZER BOLT, 1 1/8" X 6"	-	2	2	2
6-72	1 1/8" HEX LOCK NUT	-	2	2	2

* Complete single axle hanger kit.

** Use HAP-103-00 in combination with HAP-203-01, HAP-203-02, or HAP-203-03 for complete tandem axle hanger kit (2ea HAP-203-xx for Tri-Axle applications).

Hanger Locations and Specifications, pages D-8 & D-9. Replacement parts start on page D-11.

Dual Wheel Hanger Locations Chart



USING THIS KIT:	AXLE CAPACITY	A	B	C	D*
HAP-105-00 & HAP-205-01	9K	32.4"	38"	32.9"	4.87"
HAP-105-00 & HAP-205-02	9K	34.6"	42.25"	35"	4.87"
HAP-105-00 & HAP-205-03	9K	37.7"	48.5"	38.1"	4.87"
HAP-158-00 & HAP-258-01	10K GD	33"	38"	32.4"	4.99"
10GDH-K157 & 10GDH-K257-2	10K GD	35.1"	42.25"	34.6"	4.99"
HAP-158-00 & HAP-258-02	10K GD	35.1"	42.25"	34.6"	4.99"
10GDH-K157 & 10GDH-K257-3	10K GD	38.3"	48.5"	37.7"	4.99"
HAP-158-00 & HAP-258-03	10K GD	38.3"	48.5"	37.7"	4.99"
HAP-103-00 & HAP-203-01	10K-15K	33"	38"	32.4"	5.49"
HAP-103-00 & HAP-203-02	10K-15K	35.1"	42.25"	34.6"	5.49"
HAP-103-00 & HAP-203-03	10K-15K	38.3"	48.5"	37.7"	5.49"

* Ride height dimensions are at rated load capacity of suspension

9,000 – 15,000 lb. Axle Spring Hanger Recommended Reinforcements



CROSS FRAME HANGER REINFORCEMENT

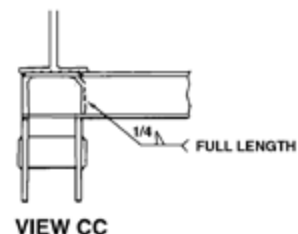
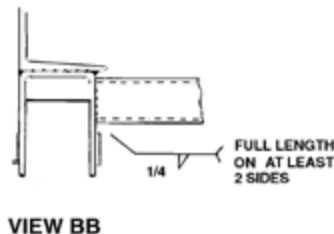
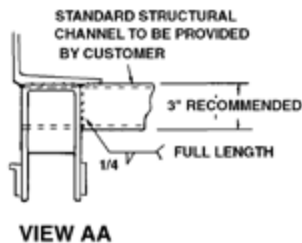
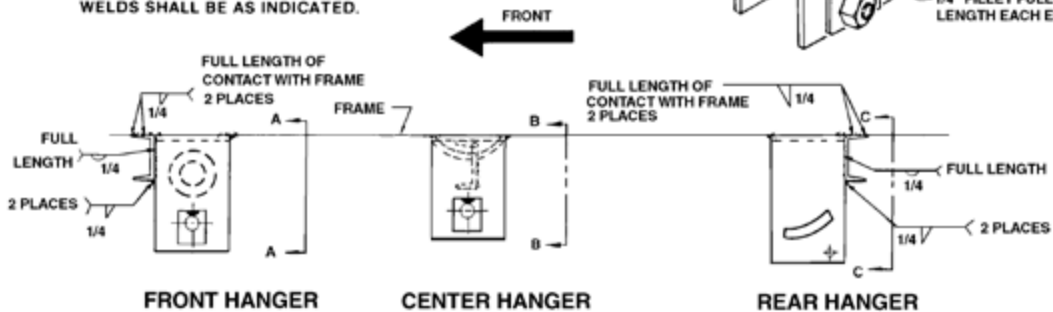
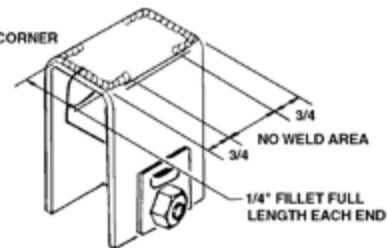
CROSS FRAME REINFORCEMENT BETWEEN SPRING AND EQUALIZER HANGER BRACKETS ASSURES FULL LOAD CARRYING CAPABILITY OF THE AXLE MOUNTED STRUCTURE.

STANDARD THREE INCH STRUCTURAL CHANNEL IS SUGGESTED FOR REINFORCEMENT MEMBERS.

WELDS SHALL BE AS INDICATED.

RECOMMENDED HANGER WELDING PROCEDURE

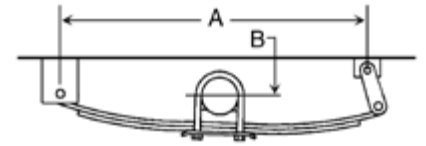
WELD AROUND CORNER AS SHOWN



Hanger Locations Chart

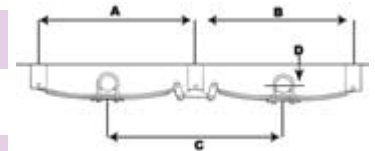
USING THIS HANGER KIT:	W/THIS SPRING SET(S):	A	B	AXLE DIAMETER
APS3SE	WIC2, WIE3	23"	3 3/4"	1 3/4"
APS3SE	WID2, WIF3, WIG4	28"	4"	1 3/4"
APS1	1020	20"	4 1/2"	1 3/4"
APS1	PR722, 3, 4, 4B, 5, 6	25 3/4"	4 1/4"	2 3/8"
APS3	1020	20"	4 1/2"	1 3/4"
APS3	PR722, 3, 4, 4B, 5, 6	25 3/4"	4"	2 3/8"
APS4	1020	20"	5 1/2"	1 3/4"
APS4	PR722, 3, 4, 4B, 5, 6	25 3/4"	5"	2 3/8"
APS5	1020	20"	5 3/8"	1 3/4"
APS5	PR722, 3, 4, 4B, 5, 6	25 3/4"	4 3/4"	2 3/8"
APS6SE	803T3, 1203T3, 1403T3	25"	4 3/4"	3"
APS6SE	E5226	26"	5"	3"
APS6SE	E5115	28"	5"	3"

Single Axles

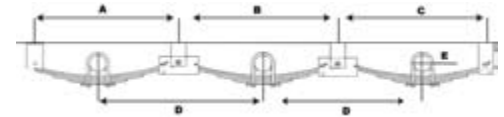


USING THIS HANGER KIT:	W/THIS SPRING SET(S):	A	B	C	D*	AXLE DIAMETER
APT1	1020	24 3/4"	24 3/4"	29 1/2"	4 1/2"	1 3/4"
APT1	PR722, 3, 4, 4B, 5, 6	29 1/2"	29 1/2"	34"	4"	2 3/8"
APT3	1020	24 3/4"	24 3/4"	30"	3 3/4"	1 3/4"
APT3	PR722, 3, 4, 4B, 5, 6	29 1/2"	29 1/2"	33 1/2"	3 1/2"	2 3/8"
APT5	1020	24 3/4"	24 3/4"	29 1/2"	5"	1 3/4"
APT5	PR722, 3, 4, 4B, 5, 6	29 1/2"	29 1/2"	33 1/2"	4 1/2"	3"
AP233/H248	1020	25"	25"	29"	5"	1 3/4"
AP233/H248	PR722, 3, 4, 4B, 5, 6	29 1/2"	29 1/2"	34"	4 1/2"	2 3/8"
APT6SE	E5226	29 3/4"	29 3/4"	34 1/2"	4 3/4"	3"
APT6SE-GS	E5226	29 3/4"	29 3/4"	34 1/2"	4 3/4"	3"
APT6SE	803T3, 1203T3, 1403T3	28 1/2"	29 1/2"	33"	4 1/2"	3"
APT6SE-GS	803T3, 1203T3, 1403T3	28 1/2"	29 1/2"	33"	4 1/2"	3"
APT6SE	E5115	32"	32"	36 3/4"	4 3/4"	3"
APT6SE-GS	E5115	32"	32"	36 3/4"	4 3/4"	3"
AP202/H202	803T3, 1203T3, 1403T3	28 3/4"	28 3/4"	33 1/2"	5 1/4"	3"
AP202/H202	E5226	29 3/4"	29 3/4"	34 1/2"	5"	3"
AP202/H202	E5115	32 1/2"	32 1/2"	36 3/4"	4 3/4"	3"
AP216/H202	803T3, 1203T3, 1403T3	30 1/2"	30 1/2"	36"	5"	3"
AP216/H202	E5226	31 1/2"	31 1/2"	37"	5"	3"
AP216/H202	E5115	33 3/4"	33 3/4"	39"	5"	3"

Tandem Axles



Triple Axle

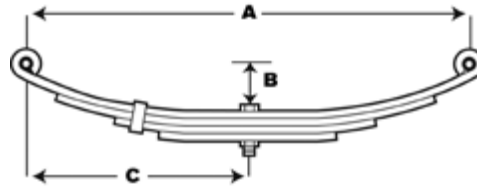


USING THIS HANGER KIT:	W/THIS SPRING SET(S):	A	B	C	D	E*	AXLE DIAMETER
APTT1	1020	24 3/4"	29"	24 3/4"	28 1/2"	4 1/2"	1 3/4"
APTT1	PR722, 3, 4, 4B, 5, 6	29 1/2"	34"	29 1/2"	34"	4"	2 3/8"
APTT3	1020	24 3/4"	29"	24 3/4"	28 1/2"	4 1/2"	1 3/4"
APTT3	PR722, 3, 4, 4B, 5, 6	29 1/2"	34"	29 1/2"	34"	3 1/2"	2 3/8"
APTT5	1020	24 3/4"	29"	24 3/4"	28 1/2"	4 1/2"	1 3/4"
APTT5	PR722, 3, 4, 4B, 5, 6	29 1/2"	34"	29 1/2"	34"	5"	2 2/8"
APTT6SE	803T3, 1203T3, 1403T3	29"	33 1/2"	29"	33 1/2"	4 3/4"	3"
APTT6SE	E5226	29 1/2"	34"	29 1/2"	34"	4 3/4"	3"
APTT6SE	E5115	32"	36 1/2"	32"	36 3/4"	4 3/4"	3"

*All dimensions shown should be considered as "zero load" on suspensions, without weight of trailer or cargo. Allow 1.5" deflection at rated capacity of spring for approximate full load dimension and 3" above tires beyond that point for "maximum bump clearance." For best suspension performance, allow 2-2.5" clearance above top of axle to bottom of frame. Use of "bump stops" is recommended above 2.5" clearance.

Double Eye Springs

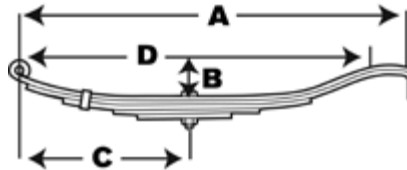
When replacing worn or broken springs, be sure to measure old springs as noted in the diagram. Your worn spring will be longer than a new spring due to wear. Be sure to call and let our professionals help you select the proper replacement.



PART NO.	REF. NO.	NO. OF LEAVES	CAPACITY	A	B	C	WIDTH	EYE DIAMETER
1020	065000	3	1000 LBS	20 1/4"	3 3/6"	10 3/16"	1 3/4"	9/16"
1724	065200	3	1750 LBS	23 1/4"	3 1/2"	11 1/2"	1 3/4"	9/16"
PR722	065420	3	1250 LBS	25 1/4"	3"	12 5/8"	1 3/4"	9/16"
PR3	065600	3	1750 LBS	25 1/4"	3"	12 5/8"	1 3/4"	9/16"
PR4B	065800	4	1750 LBS	25 1/4"	3"	12 5/8"	1 3/4"	9/16"
PR4	066000	4	2400 LBS	25 1/4"	3"	12 5/8"	1 3/4"	9/16"
PR5	066200	5	2900 LBS	25 1/4"	3"	12 5/8"	1 3/4"	9/16"
PR6	066400	6	3300 LBS	24 7/8"	3"	12 5/8"	1 3/4"	9/16"
TE30	066600	1	3000 LBS	25 1/4"	3"	12 5/8"	1 3/4"	9/16"
PR427	066800	4	1500 LBS	27"	2 3/4"	13 1/2"	1 3/4"	9/16"
PR626	067000	6	2250 LBS	26"	3 3/4"	13"	1 3/4"	9/16"

Slipper Springs

Slipper Springs should be measured for dimensions A, B, C & D, to best determine the proper spring for replacement.



PART NO.	REF. NO.	NO. OF LEAVES	CAPACITY	A	B	C	D	WIDTH	EYE DIAMETER	BUSHING
WIC2	067200	2	500 LBS	24 1/4"	4"	11"	23 1/8"	1 3/4"	9/16"	NYLON
WIE3	067400	3	750 LBS	24 1/4"	4"	11"	23 1/8"	1 3/4"	9/16"	NYLON
WIH4	067600	4	1,000 LBS	24 1/4"	4"	11"	23 1/8"	1 3/4"	9/16"	NYLON
WID2	067800	2	1,000 LBS	30 1/4"	4 1/2"	13 1/2"	27 3/8"	1 3/4"	9/16"	NYLON
WIF3	068000	3	1,500 LBS	30 1/4"	4 1/2"	13 1/2"	27 3/8"	1 3/4"	9/16"	NYLON
WIG4	068200	4	1,750 LBS	30 1/4"	4 1/2"	13 1/2"	27 3/8"	1 3/4"	9/16"	NYLON
803T3	068400	4	2,000 LBS	26 1/8"	3"	11 3/16"	24 7/8"	2"	9/16"	NYLON
1003T3	068600	4	2,500 LBS	26 1/8"	3"	11 3/16"	24 7/8"	2"	9/16"	NYLON
E5226	068800	5	3,000 LBS	26 5/8"	3 1/2"	12"	25 1/4"	2"	9/16"	NYLON
1203T3	069000	5	3,500 LBS	26 1/8"	3"	11 3/16"	24 7/8"	2"	9/16"	NYLON
1403T3	069200	7	4,000 LBS	26 1/8"	3"	11 3/16"	24 7/8"	2"	9/16"	NYLON
E5115	069400	6	4,000 LBS	29 1/2"	3 1/2"	13 1/2"	27 1/2"	2"	9/16"	NYLON
72-10-2	069550	6	4,500 LBS	30"	3 7/8"	13 1/8"	26 7/8"	2"	5/8"	RUBBER
E8536	069800	8	5,000 LBS	29 1/2"	3 1/8"	13 1/2"	27 1/2"	2"	9/16"	NYLON
93161	070000	5	5,000 LBS	32 1/2"	4"	14"	29"	2 1/2"	3/4"	RUBBER
72-21	070200	5	5,000 LBS	30"	4"	13 1/2"	26 7/8"	2 1/2"	3/4"	BRONZE
72-77	070201	5	5,000 LBS	30"	4"	13 1/2"	26 7/8"	2 1/2"	7/8"	BRONZE
72-43-1	070250	5	5,000 LBS	30"	4"	13 3/8"	26 3/4"	3"	1"	RUBBER
72-44-1	070450	6	6,000 LBS	30"	4"	13 3/8"	26 3/4"	3"	1"	RUBBER
72-45-1	070650	7	7,500 LBS	30"	4"	13 3/8"	26 3/4"	3"	1"	RUBBER
72-48	071000	3	11,200 LBS	43 3/4"	6 1/4"	N/A	42"	3"	N/A	N/A

NOTE: Dimensions shown above are for identification purposes only. Allow for slight variances in dimensions, due to spring manufacturing tolerances. "Replacement in pairs" is recommended for proper axle alignment and suspension performance.

Suspension Bushings

The table below contains the replacement bushings used in equalizers and springs of various types and styles.

PART NO.	REF. NO.	I.D.	O.D.	LENGTH	DESCRIPTION
ENP322	103775	1/2"	7/8"	1 3/4"	NYLON, SPRING EYE
ENP605	103785	9/16"	7/8"	1 3/4"	NYLON, SPRING EYE
155228	104000	1/2"	11/16"	1 3/4"	NYLON, SPRING EYE, "WI" SERIES
722106	104200	9/16"	11/16"	1 3/4"	NYLON, SPRING EYE / EQUALIZER
722107	104400	9/16"	11/16"	2"	NYLON, SPRING EYE
722108	104410	9/16"	3/4"	1 3/4"	NYLON, EQUALIZER
722109	104420	3/4"	7/8"	1 3/4"	NYLON, EQUALIZER
722109A	104425	3/4"	.91"	1 3/4"	NYLON, EQUALIZER
721590	104430	7/8"	1 1/16"	2 15/16"	NYLON, EQUALIZER
091414	104450	1"	2 1/8"	4"	RUBBER / STEEL SLEEVED, EQUALIZER, HAYES 10K
14-54	104600	9/16"	1 5/16"	2"	NYLON, SPRING EYE (2-PIECE)
14-73	104650	5/8"	1 3/8"	2 3/16"	RUBBER/STEEL SLEEVED, SPRING EYE, DX 9K
14-67	104675	3/4"	1"	2 1/2"	BRONZE, SPRING EYE, DX 10K GD
14-111	104680	7/8"	1"	2 1/2"	BRONZE, SPRING EYE, DX 10K GD
14-112	104685	3/4"	2"	2 5/8"	RUBBER/STEEL SLEEVED, DX10K GD
14-69	104700	1"	2"	3"	RUBBER/STEEL SLEEVED, SPRING EYE, DX 10K - 15K
14-51	104800	1"	1 1/4"	3"	BRONZE, SPRING EYE, DX 10K - 15K (OLD STYLE)
091413	105000	3/4"	1 3/4"	2 3/4"	RUBBER/STEEL SLEEVED, SPRING EYE, HAYES 10K



Packaged Bushings



PART NO.	REF. NO.	DESCRIPTION	POPULARITY CODE
SP05-020	103710	NYLON, 9/16" ID, 11/16" OD, 1 3/4" LONG (QTY 8)	A
SP05-040	103720	NYLON, 9/16" ID, 11/16" OD, 2" LONG (QTY 8)	B
SP05-060	103730	NYLON, 9/16" ID, 3/4" OD, 1 3/4" LONG (QTY 6)	B
SP05-080	103740	2 PIECE NYLON, 9/16" ID, 1 5/16" OD, 2" LONG (QTY 4)	C



Spring Center Tie Bolts

We carry the most popular replacement center tie bolts used in the industry.

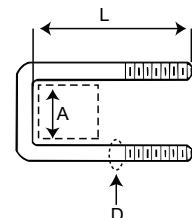
PART NO.	REF. NO.	DESCRIPTION
516-3TB	103200	5/16" X 3" SPRING CENTER TIE BOLT W/NUT
516-TBN	103230	5/16" NUT FOR SPRING CENTER TIE BOLT
38-3TB	103400	3/8" X 3" SPRING CENTER TIE BOLT W/NUT
38-5TB	103600	3/8" X 5" SPRING CENTER TIE BOLT W/NUT
38N	077600	3/8" NUT FOR SPRING CENTER TIE BOLT



Replacement U-Bolts - Square End

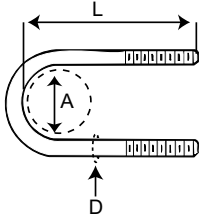
- For 1 1/2" to 2" Square Tubing

PART NO.	REF. NO.	(A) SIZE	(D) DIAMETER	(L) LENGTH
1753223	076400	1 1/2"	1/2"	5"
175130	076800	1 3/4"	9/16"	5"
175211	077200	2"	9/16"	5 3/4"



Replacement U-Bolts - Round End

- Replacement for 2,000 lb. - 15,000 lb. Axles



PART NO.	REF. NO.	(A) SIZE	DESCRIPTION	(D) DIAMETER	(L) LENGTH
175643	072200	1 3/4"	W/NUTS FOR 2K AXLES	3/8"	4 1/4"
175668	072600	2 1/2"	W/NUTS FOR 7.5K SOLID BAR AXLES	9/16"	7 3/4"
176400	073000	2 3/8"	W/NUTS FOR 3.5K AXLES	1/2"	5 1/2"
1755892	073400	3"	W/NUTS FOR 5.2K, 6K & 7K AXLES	1/2"	7"
176500	073800	3"	W/NUTS FOR 5.2K, 6K & 7K AXLES	9/16"	7 1/4"
11-65	074200	3 1/2"	W/NUTS FOR 8K AXLES	9/16"	8"
175666	074500	3 1/2"	W/NUTS FOR 8K AXLES W/10 LEAF SPRING	9/16"	9"
11-64	074800	4"	W/LOCKNUTS FOR 9K AXLES	5/8"	8 1/8"
11-77	075200	5"	W/LOCKNUTS FOR 10K AXLES	5/8"	8 7/8"
091148	075600	5"	W/NUTS FOR HAYES 10K AXLES	5/8"	9 1/2"
11-70	076000	5"	W/LOCKNUTS FOR 12K & 15K AXLES	3/4"	9 5/8"

U-Bolt Kits

U-Bolt Kit contents		APUBR-10	APUBR-1	APUBR-8	APUBR-9	APUBR-35
		071200	071400	071600	071800	072000
		1-3/4" Rd	2-3/8" Rd	3" Rd	3" Rd	3-1/2" Rd
U-Bolts						
175643LN	1-3/4" Round, 3/8" Dia., 4-1/4" Long	4	-	-	-	-
176400LN	2-3/8" Round, 1/2" Dia., 5-1/2" Long	-	4	-	-	-
1755892LN	3" Round, 1/2" Dia., 7" Long	-	-	4	-	-
176500LN	3" Round, 9/16" Dia., 7-1/4" Long	-	-	-	4	-
11-65LN	3-1/2" Round, 9/16" Dia., 8" Long	-	-	-	-	4
Axle Plates						
117535	1-3/4" Round axle, 1-3/4" spring	2	-	-	-	-
117595	2-3/8" Round axle, 1-3/4" spring	-	2	-	-	-
117521	3" Round axle, 1-3/4" or 2" spring	-	-	2	2	-
117581	3" Round axle, 2" spring	-	-	-	-	2
Nuts						
38N	3/8"-24 Hex Nut	8	-	-	-	-
12N	1/2"-20 Hex Nut	-	8	8	-	-
916N	9/16"-18 Hex Nut	-	-	-	8	8



Packaged U-Bolts



PART NO.	REF. NO.	DESCRIPTION	POPULARITY CODES
SP01-020	071050	1 3/4" ROUND, W/NUT, 3/8" DIAMETER, 4 1/4" LONG (QTY 2)	B
SP01-040	071060	2 3/8" ROUND, W/NUT, 1/2" DIAMETER, 5 1/2" LONG (QTY 2)	A
SP01-060	071070	3" ROUND W/NUT, 1/2" DIAMETER, 7" LONG (QTY 2)	A
SP01-080	071080	3" ROUND W/NUT, 9/16" DIAMETER, 7 1/4" LONG (QTY 2)	A
SP01-100	071085	3 1/2" ROUND W/NUT, 9/16" DIAMETER, 8" LONG (QTY 2)	C
SP01-120	071090	1 1/2" SQUARE W/NUT, 1/2" DIAMETER, 5" LONG (QTY 2)	B
SP01-140	071100	1 3/4" SQUARE W/NUT, 9/16" DIA, 5" LONG (QTY 2)	B
SP01-160	071110	2" SQUARE W/NUT, 9/16" DIA, 5 3/4" LONG (QTY 2)	B

U-Bolt Nuts

PART NO.	REF. NO.	DESCRIPTION
38N	077600	3/8"-24 U-BOLT NUT
12N	078000	1/2"-20 U-BOLT NUT
916N	078400	9/16"-18 U-BOLT NUT
6-38	078800	5/8"-11 U-BOLT LOCKNUT
6-113	100000	3/4"-10 U-BOLT LOCKNUT



U-Bolt Axle Plates

Replacements for all axles with 1 3/4" to 5" diameter tube.

PART NO.	REF. NO.	AXLE SIZE	SPRING WIDTH	U-BOLT SIZE	AXLE TYPE
117535	079400	1 3/4" RD	1 3/4"	3/8"	2K STRAIGHT
117595	079600	2 3/8" RD	1 3/4"	1/2"	3.5K, 2K DROP
12-4	079800	2 3/8" RD	2"	1/2"	3.5K, 2K DROP
117858	080000	2 1/2" RD	2"	9/16"	7.5K SOLID BAR
117521	080200	3" RD	1 3/4" OR 2"	1/2" OR 9/16"	6K-7K, 3.5K HD
117581	080400	3 1/2" RD	1 3/4" OR 2"	9/16"	DX 8K
12-42	080600	4" RD	2"	5/8"	DX 9K
12-49	080800	5" RD	2 1/2"	5/8"	DX 10K GD & HAYES 10K
12-53	081200	5" RD	3"	5/8"	DX 10K HD
12-46	081400	5" RD	3"	3/4"	DX 12K-15K
115983	081600	1 1/2" SQ	1 3/4"	1/2"	SQUARE BAR
116308	081800	1 3/4" SQ	1 3/4"	9/16"	SQUARE BAR
117594	082000	2" SQ	1 3/4" OR 2"	9/16"	SQUARE BAR



Shackle Straps

Shackle Straps are a popular replacement item for double eye suspensions. Available in 3 lengths. (9/16" hole)

PART NO.	REF. NO.	WIDTH	SIZE
18-11	101600	1 1/4"	2 1/4" HOLE CENTER, BULK
115052	101800	1 1/4"	2 5/8" HOLE CENTER, BULK
115208	102000	1 1/4"	3 1/8" HOLE CENTER, BULK



Packaged Shackle Straps



PART NO.	REF. NO.	DESCRIPTION	POPULARITY CODES
SP03-020	101550	2 1/4" HOLE CENTER, 1 1/4" WIDE, 9/16" HOLE (QTY 4)	B
SP03-040	101560	2 5/8" HOLE CENTER, 1 1/4" WIDE, 9/16" HOLE (QTY 4)	A
SP03-060	101570	3 1/8" HOLE CENTER, 1 1/4" WIDE, 9/16" HOLE (QTY 4)	B



Hanger for "WI" Series Springs

Used on 1 3/4" wide "WI" series slipper springs with 9/16" spring eye I.D.

PART NO.	REF. NO.	DESCRIPTION	TOP TO CENTER OF HOLE	BOLT SIZE
115706S	088800	REAR HANGER/CLIP	N/A	N/A
115917	089400	FRONT HANGER, 9/16" EYE	1 1/2"	9/16"

Hangers for Double Eye Springs

Used on 1 3/4" wide springs with 9/16" spring eye I.D.

PART NO.	REF. NO.	DESCRIPTION	TOP TO CENTER OF HOLE	BOLT SIZE
93003-3X	089150	REAR HANGER, NO BUSHING, SINGLE AXLE ONLY	1 1/2"	9/16"
30-20	089200	REAR HANGER, SINGLE AXLE ONLY	.91"	9/16"
115917	089400	FRONT OR REAR HANGER	1 1/2"	9/16"
115918	089600	CENTER HANGER	2 1/2"	9/16"
28-5	089800	FRONT, CENTER, OR REAR HANGER	3 1/4"	9/16"
29-31	090000	HANGER	3 5/8"	9/16"
E4139	090200	HANGER	4 1/4"	9/16"
115919	090400	CENTER HANGER	5 7/16"	3/4"



Hangers for 2" Slipper Springs

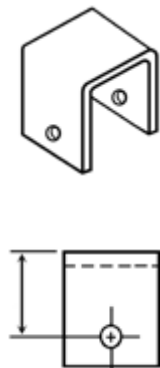
Front, Center and Rear Hangers for all applications of 2" wide slipper springs on 3,500 - 9,000 lb. axles.

PART NO.	REF. NO.	DESCRIPTION	TOP TO CENTER OF HOLE	BOLT SIZE
28-1	090600	FRONT HANGER OF H202	4 1/4"	9/16"
29-1	090800	CENTER HANGER OF H202	3 1/2"	7/8"
30-28	091000	REAR HANGER OF H202	5 1/4"	5/16"
721584	091200	FRONT HANGER OF APT6SE	3 3/4"	9/16"
721586	091400	CENTER HANGER FOR APT6SE	3 3/8"	7/8"
721585	091600	REAR HANGER FOR APT6SE	5 1/6"	9/16"
28-68-4	091780	FRONT HANGER OF HAP-105	5"	5/8"
28-9-1	091800	FRONT HANGER	5"	9/16"
29-5-1	092200	CENTER HANGER	4 1/2"	7/8"
30-68-1	092380	REAR HANGER FOR HAP-105	6 1/4"	5/16"
30-6-1	092400	REAR HANGER	6 3/8"	5/16"
29-39-4	092980	CENTER HANGER FOR HAP-205	4 1/2"	1"



Hangers for 2 1/2" Slipper Springs

Front, Center and Rear Hanger Replacements of Dexter 10,000 lb. General Duty and Hayes 9K, 10K and 12K axles.

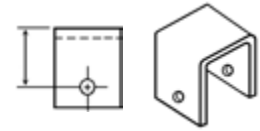


PART NO.	REF. NO.	DESCRIPTION	TOP TO CENTER OF HOLE	BOLT SIZE
28-74-2	092805	FRONT HANGER FOR H158	5 1/4"	3/4"
28-72-1	092601	LEFT FRONT HANGER FOR H157	5 1/4"	7/8"
10GDH-FTLH	092602	LEFT FRONT HANGER FOR 10GD	5 1/4"	7/8"
28-73-1	092801	RIGHT FRONT HANGER FOR H157	5 1/4"	7/8"
10GDH-FTRH	092802	RIGHT FRONT HANGER FOR 10GD	5 1/4"	7/8"
29-42-1	093100	CENTER HANGER FOR H258	5 3/8"	1"
10GDH-CTR	093001	CENTER HANGER FOR 10GD	5 3/8"	1"
30-61-1	093200	REAR HANGER FOR 10GD	4 1/2"	N/A
10GDH-REAR	093201	REAR HANGER FOR 10GD	4 1/2"	N/A
092829	094000	FRONT HANGER FOR HAYES	5 1/4"	3/4"
092920	094200	CENTER HANGER FOR HAYES	1 7/8"	1"
093026	094400	REAR HANGER FOR HAYES	6"	N/A

Hangers for 3" Slipper Springs

PART NO.	REF. NO.	DESCRIPTION	TOP TO CENTER OF HOLE	BOLT SIZE
28-67-4	093400	FRONT HANGER FOR HAP-103	6 1/4"	1"
29-37-4	093600	CENTER HANGER FOR HAP-203 (OLD STYLE)	4 1/2"	1 1/8"
29-43-2	093605	CENTER HANGER FOR HAP-203 (NEW STYLE)	4 1/8"	1 1/8"
30-66-1	093800	REAR HANGER FOR HAP-103	7 11/16"	1/2"

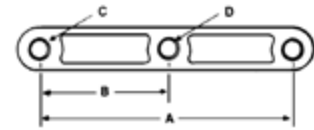
Used on Dexter 10,000 - 15,000 lb. axles.



Straight Equalizers

PART NO.	REF. NO.	A	B	C	D	O.D.
A2251B	082200	8"	4"	9/16"	9/16"	1 3/4"
A2251B3	082400	8"	4"	9/16"	3/4"	1 3/4"

For double eye springs, the A2251B3 is used in the APT1, APTT1 hanger kits.

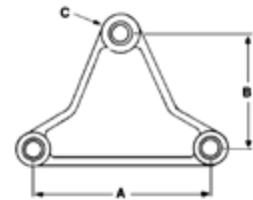


SUSPENSIONS

Tall Triangular Equalizer

Widely used for years in the R.V. and Mobile Home industry.

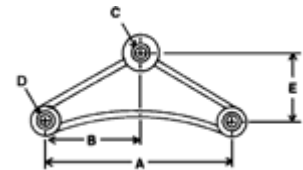
PART NO.	REF. NO.	A	B	C	O.D.
13-10	082600	6"	4"	9/16"	1 3/4"



Curved Equalizers

The 13-104-2 Equalizer is found in AP233 Attaching Parts Kit. A2252CB is found in the APT3, APT5, APTT3 and APTT5 Attaching Parts Kits.

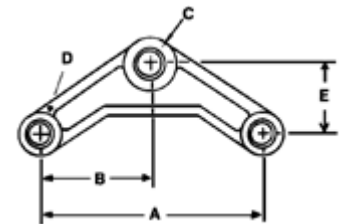
PART NO.	REF. NO.	A	B	C	D	E	O.D.
13-104-2	083100	5 5/8"	2 13/16"	9/16"	9/16"	2"	1 3/4"
A2252CB	083400	7 3/4"	3 7/8"	9/16"	9/16"	2 7/8"	1 3/4"
A2252CB34	083600	7 3/4"	3 7/8"	3/4"	9/16"	2 7/8"	1 3/4"



Short Curved Equalizer

The 220AIT3B is found in APT4, APTT4 Hanger Kits.

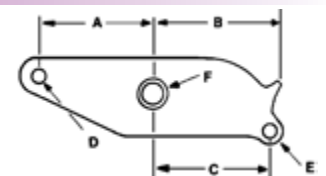
PART NO.	REF. NO.	A	B	C	D	E	O.D.
220AIT3B	083200	6 1/4"	3 1/8"	3/4"	9/16"	2"	1 3/4"



Equalizer for 2" Slipper Springs

Used by Dexter Axle for years, this Equalizer is found in the AP202 Attaching Parts Kit.

PART NO.	REF. NO.	A	B	C	D	E	F	I.D.
13-4	083800	4 5/8"	5 1/2"	5"	9/16"	5/16"	7/8"	2 1/4"



Section D-15

E-Z FLEX® by:
 HEAVY DUTY RUBBER SUSPENSION SYSTEM


DEXTER AXLE

HOW THE E-Z FLEX SYSTEM WORKS:

The Dexter E-Z Flex Heavy Duty Rubber Suspension System simply replaces the standard steel equalizer and works with the trailer's existing leaf springs. During travel, the E-Z Flex System pivots and compresses to isolate and absorb damaging road shocks before they are sent to the trailer frame and its contents.

- Resilient rubber core isolates and absorbs damaging road shocks before they are sent to the trailer's frame and contents.
- Delivers smoother towing than the traditional leaf spring suspensions.
- Retrofits to existing leaf spring suspensions by replacing the standard steel equalizer.
- Easy installation requires no welding, grinding, or cutting of the trailer frame or hangers.
- Available in 33" and 35" sizes for use on double and triple axle trailers.

SUSPENSIONS

PART#	DESCRIPTION
K71-652-00	EZ Flex Tandem Suspension Kit, 2 each: 5-5/8" Equalizer, Bolts/Nuts/Shackle
K71-653-00	EZ Flex Tandem Suspension Kit, 2 each: 7-3/4" Equalizer, Bolts/Nuts/Shackle
K71-654-00	EZ Flex Equalizer Kit, 2 each: 5-5/8" Equalizer, Bolts/Nuts
K71-655-00	EZ Flex Equalizer Kit, 2 each: 7-3/4" Equalizer, Bolts/Nuts

K71-652-00



K71-653-00



K71-654-00



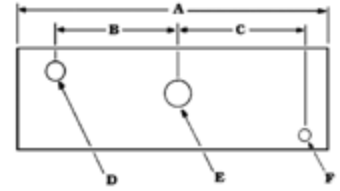
K71-655-00



Equalizers for 2" Slipper Springs

- 13-44 is found in AP216 Attaching Parts Kit.
- E5541 is formed of 5/16" material, E4541 is of 1/4" material.
- 13-117, 118, and 119 are for new style Dexter 8-9K.

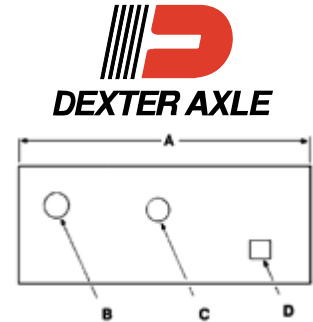
PART NO.	REF. NO.	A	B	C	D	E	F	I.D.
13-44	084000	13 1/8"	5 1/2"	6"	9/16"	15/16"	3/8"	2 3/16"
E4541	084100	12"	4 3/4"	4 5/8"	9/16"	7/8"	9/16"	2 3/16"
E5541	084200	12"	4 3/4"	4 5/8"	9/16"	7/8"	9/16"	2 3/16"
13-117-03	084220	13 1/8"	5 1/2"	5 9/16"	5/8"	15/16"	5/16"	2 3/16"
13-118-03	084240	17 3/8"	7 5/8"	7 3/4"	5/8"	15/16"	5/16"	2 3/16"
13-119-03	084260	23 1/2"	10 3/4"	10 3/4"	5/8"	15/16"	5/16"	2 3/16"



Equalizers for 2 1/2" Slipper Springs

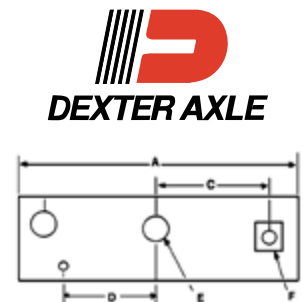
- Used on Dexter 10,000 lb. General Duty axles, w/7/8" bronze-brushed springs, or 3/4" Rubber-Bushed Springs.

Part No.	Ref. No.	Axle Spacing	A	B	C	D	Type	I.D.
13-139-3	085275	38"	14 1/4"	1 3/8"	1"	3/4"	LH/RH	2 3/4"
13-132-2	085001	38"	14 1/4"	1 3/8"	1"	7/8"	LH	2 3/4"
13-133-2	085201	38"	14 1/4"	1 3/8"	1"	7/8"	RH	2 3/4"
13-140-3	085675	42 1/4"	18 3/8"	1 3/8"	1"	3/4"	LH/RH	2 3/4"
13-134-2	085401	42 1/4"	18 3/8"	1 3/8"	1"	7/8"	LH	2 3/4"
10GDH-EQ42LH	085402	42 1/4"	18 3/8"	1 3/8"	1"	7/8"	LH	2 3/4"
13-135-2	085601	42 1/4"	18 3/8"	1 3/8"	1"	7/8"	RH	2 3/4"
10GDH-EQ42RH	085602	42 1/4"	18 3/8"	1 3/8"	1"	7/8"	RH	2 3/4"
13-141-3	086015	48 1/2"	24 5/8"	1 3/8"	1"	3/4"	LR/RH	2 3/4"
13-136-2	085801	48 1/2"	24 5/8"	1 3/8"	1"	7/8"	LH	2 3/4"
10GDH-EQ48LH	085802	48 1/2"	24 5/8"	1 3/8"	1"	7/8"	LH	2 3/4"
13-137-2	086001	48 1/2"	24 5/8"	1 3/8"	1"	7/8"	RH	2 3/4"
10GDH-EQ48RH	086002	48 1/2"	24 5/8"	1 3/8"	1"	7/8"	RH	2 3/4"



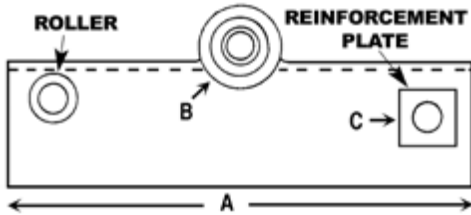
Equalizers for 3" Slipper Springs

PART NO.	REF. NO.	AXLE SPACING	A	C	D	E	F	I.D.
13-107-7	086025	38"	14 1/4"	5"	4 1/2"	1 1/8"	1"	3 1/8"
13-108-3	086425	42 1/4"	18 3/8"	7 1/8"	6 3/4"	1 1/8"	1"	3 1/8"
13-109-3	086825	48 1/2"	24 3/4"	10 3/8"	10"	1 1/8"	1"	3 1/8"



Equalizers for Hayes 2 1/2" Slipper Springs

- Equalizer is stamped **L** or **R** to identify. Tab lock/reinforcement plate goes to the inside of trailer.



PART NO.	REF. NO.	LH / RH	A	B	C	I.D.
09138708	087600	LH	15 3/4"	1"	3/4"	2 3/4"
09138709	087605	RH	15 3/4"	1"	3/4"	2 3/4"
09138710	087800	LH	21 3/4"	1"	3/4"	2 3/4"
09138711	087805	RH	21 3/4"	1"	3/4"	2 3/4"

Cotter Pins and Grease Zerks



PART NO.	REF. NO.	SIZE	DESCRIPTION
165649	101200	1/8" X 1 3/4"	COTTER PIN
1610	101400	3/8"	1/4" STRAIGHT GREASE ZERK, 1/8" M.P.T.
61-6	101450	3/8"	1/4" 65° ANGLE GREASE ZERK, 1/8" M.P.T.

Popular Suspension Bolts with Nuts



PART NO.	REF. NO.	DIAMETER	LENGTH	DESCRIPTION
166081	095800	9/16"	3"	SHACKLE BOLT W/NUT FOR DOUBLE EYE SPRINGS
126B2	096200	9/16"	3"	WET SHACKLE BOLT W/NUT & ZERK FOR DOUBLE EYE SPRINGS
166079	096600	9/16"	3 1/2"	SPRING EYE BOLT W/NUT FOR SLIPPER SPRINGS
126A1	097200	3/4"	3 1/2"	WET EQUALIZER BOLT W/NUT, ZERK & COTTER PIN
166078	097800	7/8"	4 11/16"	EQUALIZER BOLT W/NUT, COTTER PIN
166074	098250	7/8"	4 11/16"	WET EQUALIZER BOLT W/ LOCKNUT, ZERK PRESSED IN

Packaged Bolts & Nuts



PART NO.	REF. NO.	DESCRIPTION	POPULARITY CODES
SP04-020	094500	9/16" X 3" SHACKLE BOLT W/NUT FOR 1 3/4" WIDE SPRINGS (QTY 4)	A
SP04-021	094505	9/16" X 3" WET SHACKLE BOLT W/ NUT & ZERK (QTY 4)	C
SP04-040	094510	9/16" X 3 1/2" SHACKLE BOLT W/NUT FOR 2" WIDE SPRINGS (QTY 4)	B
SP04-051	094515	3/4" X 3 1/2" WET EQUALIZER BOLT W/NUT, ZERK & COTTER PIN (QTY 2)	C
SP04-060	094520	7/8" X 4 11/16" EQUALIZER BOLT & NUT, W/COTTER PIN (QTY 2)	C
SP04-080	094530	7/8" X 4 11/16" EQUALIZER BOLT & NUT, W/ZERK PRESSED IN (QTY 1)	C

Suspension Bolts

PART NO.	REF. NO.	SIZE	LENGTH	GRADE	DESCRIPTION
7-7	094600	5/16"-18	3 1/4"	2	SPRING RETAINER BOLT
7-95	098600	1/2"-20	4 1/2"	2	10K, 12K, 15K SPRING RETAINER BOLT
9163B	095600	9/16"-18	3"	5	DBL EYE SHACKLE BOLT
126B2LN	096000	9/16"-18	3"	5	DBL EYE SHACKLE BOLT W/GREASE ZERK
91635B	096400	9/16"-18	3 1/2"	5	SLIPPER SPRING SHACKLE BOLT
7-181	096825	5/8"-11	4"	5	9K SPRING EYE BOLT
126A1LN	097000	3/4"-16	3 1/2"	5	EQUALIZER CENTER BOLT W/GREASE ZERK
7-264	098775	3/4"-10	4 1/2"	5	10GD RUBBER BUSHED SPRING EYE BOLT
7-135-2	098800	3/4"-10	4 1/2"	5	10K GD SPRING EYE BOLT W/GREASE ZERK
090747	099000	3/4"-16	4 1/2"	5	10K 12K HAYES SPRING EYE BOLT
7845B	097600	7/8"-9	4 11/16"	2	EQUALIZER CENTER BOLT
7-260-2	099801	7/8"-9	4 1/2"	2	10K GD SPRING EYE BOLT
7-1-1	098225	7/8"-9	4 5/8"	2	EQUALIZER CENTER BOLT W/GREASE ZERK
7-182	098450	1"-8	5"	5	9K EQUALIZER CENTER BOLT
7-169	099250	1"-8	5 1/2"	5	10K, 12K, 15K DEXTER SPRING EYE BOLT
7-136-2	099200	1"-8	5 7/8"	5	10K GD EQUALIZER CENTER BOLT
090746	099600	1"-14	5 7/8"	5	10K, 12K HAYES EQUALIZER CENTER BOLT
7-170	099650	1 1/8"-7	6"	5	10K, 12K, 15K DXTR EQUALIZER CNTR BOLT



SUSPENSIONS

Suspension Nuts



PART NO.	REF. NO.	SIZE	DESCRIPTION
6-11	094800	5/16"-18	HEX NUT FOR 7-7 KEEPER BOLT
38N	077600	3/8"-24	U-BOLT NUT FOR 175643LN U-BOLTS
12N	078000	1/2"-20	U-BOLT NUT FOR 176400LN, 1755892LN
916DLN	096800	9/16"-18	HEX LOCKNUT FOR 91638, 91635B SHACKLE BOLTS
916N	078400	9/16"-18	U-BOLT NUT FOR 176500LN, 11-65N U-BOLTS
6-38	078800	5/8"-11	LOCKNUT FOR 11-64LN/11-77LN U-BOLT, 7-181 SPG BOLT
165093	097400	3/4"-16	CASTLE NUT FOR 126A1LN EQUALIZER BOLT
6-113	100000	3/4"-10	LOCKNUT FOR 7-135-2 SPG BOLT & 11-70LN U-BOLT
090637	100400	3/4"-16	LOCKNUT FOR HAYES 090747 10K SPRING EYE BOLT
78CN	098400	7/8"-9	CASTLE NUT FOR 7845B EQUALIZER BOLT
6-111	098425	7/8"-9	LOCKNUT FOR 7-1-1 & 7-260-2 BOLTS
6-112	100600	1"-8	LOCKNUT FOR 7/182, 7/169 BOLTS
090636	100800	1"-14	LOCKNUT FOR HAYES 10K EQUALIZER BOLT
6-72	101000	1 1/8"-7	LOCKNUT FOR 10K, 12K, 15, 7-170 EQUALIZER BOLT

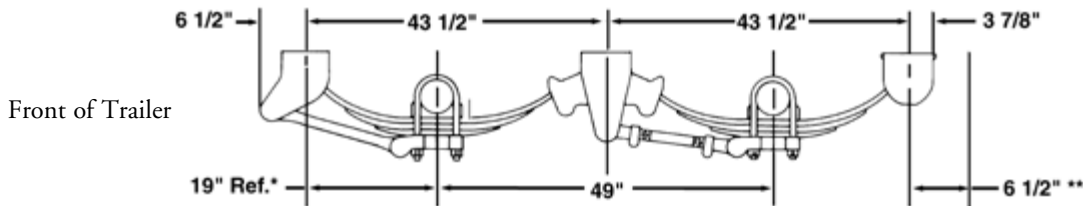
H-9700



**22,400 lb. and 25,000 lb.
Heavy Duty Suspensions**

The World's #1 Selling Suspension

Tandem Underslung Suspension Dimensions



* Ref.: This dimension may vary with changes in springs, spring seat heights, etc.
** Recommended spring clearance

When looking for a heavy duty, economical, versatile, low maintenance suspension that maximizes your payload and has after market parts readily available - *Hutch is the one for you.*

Hutchens Industries has many variations to fit your special needs. Redneck stocks the most common suspension for our segment of the trailer industry, a fabricated (Fab), underslung (US) suspension with 49" axle spacing, undermount hangers (UN/MT) for 5" round axles with a 3/4" seat height providing a 7" ride height, with 354-00 (#72-48) 3-Leaf, high-arch springs. (Allow 4 1/2" min. clearance above the tires and 3" above the U-bolts.)

PART NO.	REF. NO.	HANGER TYPE	NO. OF AXLES	AXLE CONFIG.	AXLE CENTER	HANGER STYLE	TYPE AXLE	SEAT HEIGHT	SPRING TYPE
H7700HUS-354	043175	FAB	SINGLE	US	49"	UN/MT	5" RD	3/4"	354-00
H9700TUS-354	043205	FAB	TANDEM	US	49"	UN/MT	5" RD	3/4"	354-00
H9700ADD-354	043215	FAB	ADD-ON*	US	49"	UN/MT	5" RD	3/4"	354-00
HAP-101-00	043225	FAB	SINGLE	US	49"	UN/MT	5" RD	3/4"	WITHOUT
HAP-201-00	043300	FAB	ADD-ON*	US	49"	UN/MT	5" RD	3/4"	WITHOUT
10521-00	043400	BUMP-OUT BLOCK FOR HUTCH TRIAXLE SUSPENSION (NEED 4 FOR TRIAXLE)							

* An Add-on suspension kit is used to convert a single axle suspension into a tandem or a tandem into a triaxle.

When ordering Hutch suspensions that Redneck may not stock, use the following chart and the help of your Redneck branch. Redneck can deliver any combination you might need.

What to know when ordering a Custom Hutch Suspension

Hanger Type:	Cast	Fabricated (FAB)		Hanger Style*:	UN/MT	ST/MT		
Number of Axles:	Single	Tandem	Tri		FL/MT/BO	FL/MT/WO		
Type of Axle:	5" RD	5x5 SQ	4x6		UN/MT I-BEAM	SI/MT		
Axle Centers:	49"	Other		Spring Number or Type:				
Axle Configuration:	Overslung (OS)	Underslung (US)		Leaves	GAWR	High Arch	Med. Arch	Low Arch
				3	22.4 k	354-00	355-00	356-00
				3	25.0 k	365-00	N/A	365-01
				7	22.4 k	751-05	N/A	751-01
				8	25.0 k	752-05	N/A	752-01

Axle or Spring Seat Height: 3/4", 1 1/4", 1 3/4", 2 1/4", 2 3/4", 3 1/4", 4 1/4", 4 1/4" and 4 3/4".

* Under Mount (UN/MT), Straddle Mount (ST/MT), Side Mount (SI/MT), Flange Mount (FL/MT)

SUSPENSIONS



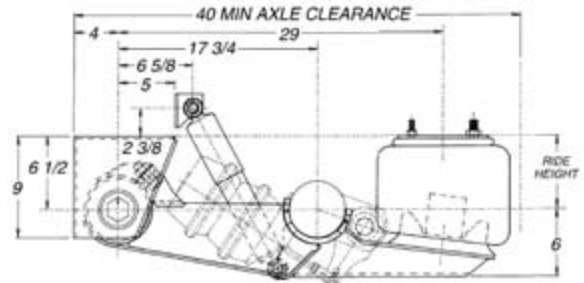
RIDEWELL AIR-RIDE Trailer Suspensions

**Model RAR-240: Monopivot Underslung
Capacity: 10,000 – 25,000 lbs.**

Low Maintenance Features:

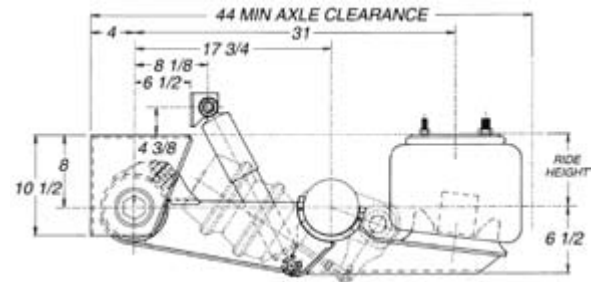
- Exclusive Contoured Axle Seat optimizes Axle Weldment.
- No U-bolts Required, eliminating Weight and Maintenance.
- Double-Bonded Bushing with Manual Clamp-in Feature gives Long Service Life.
- Only Hand Tools required for Bushing Mounting or Removal.
- Simple, Manually Adjustable Axle Alignment by Ridewell's Patented Eccentric Bolt.

Suspension No. 2400080



Designed for 10,000 – 15,000 lb. Axles

Suspension No. 2404106



Designed for 22,500 – 25,000 lb. Axles

SUSPENSIONS

Suspensions

PART NO.	REF. NO.	MAXIMUM CAPACITY	AXLE SIZE	RIDE HEIGHT	AXLE TRAVEL UP	AXLE TRAVEL DOWN	MINIMUM AXLE SPACING
2400080	043600	15K	5"	MIN: 5 1/2" MAX: 6"	2 1/2" 3"	3 1/2" 3"	40"
2404106	043650	25K	5"	MIN: 6 1/2" MAX: 7"	2 3/4" 3 1/4"	3 3/4" 3 1/4"	44"

Air Control Kits (1 Required Per Trailer):

PART NO.	REF. NO.	DESCRIPTION
6301BFAB10	043700	HEIGHT CONTROL VALVE (1 REQ'D PER TRAILER W/UP TO 3 AXLES)
1220007	043750	AIR COMPRESSOR KIT W/AIR TANK (FOR TRAILERS W/O AIR SUPPLY)

NOTE: 1207423C100 NOT INCLUDED

The following table shows the minimum hubface and axle wall thickness to be used with the Ridewell Air-Ride suspensions.

Axle Model	Wall Thickness	S-Cam Length	Min. Hubface
10K HD	.44"	22.312"	66.50"
12K Hi-Profile	.44"	22.312"	66.62"
12K Lo-Profile	.44"	22.312"	73.12"
15K	.44"	22.312"	69.04"
20K + w/12.25" Brake	.62"	22.312"	69.50"*
20K + w/16.50" Brake	.62"	23.437"	71.00"*

*Reminder: All 10K - 15K axles are ordered by "hubface" & all 20K & up are ordered by "track".

When ordering Ridewell suspensions that Redneck may not stock, use the following chart and the help of your Redneck branch. Redneck can deliver any combination you might need.

What to know when ordering a custom Ridewell Suspension			
Lift Kit:	Yes	No	Capacity per Axle
Axle Size:	5" OD by 5/8" Wall	Other	Mounting Height
			10,000 lbs. to 30,000 lbs. 5 1/2" to 24"

Red Rider

Air Ride Suspension

Manufactured by:



PROTECTION:

Full featured 8,000 lb. capacity air ride; cushions & protects the towing vehicle, the trailer and its cargo.

EASE OF USE:

Optional dump valve offers the ability to release the air from the springs to aid in loading & unloading of cargo.

COMPACT DESIGN:

The compact design fits standard size fender envelope and maintains a low-ride height.

LOW MAINTENANCE:

No bolts to re-torque. Replaceable parts are readily available at most HD truck parts stores.

ADJUSTABLE ALIGNMENT:

Ability to align the axles during installation to ensure proper handling & performance.

RELIABILITY:

Designed and manufactured by Ridewell Suspensions, who has been building Air Ride Suspensions since 1967.

AUTOMATIC:

Height control valve; compressor & air tank automatically and instantly maintain trailer ride height setting.

AVAILABILITY:

Distributed exclusively by Redneck Trailer Supplies.

Red Rider Suspension

PART NO.	REF. NO.	MAXIMUM CAPACITY	AXLE SIZE	RIDE HEIGHT	AXLE TRAVEL UP	AXLE TRAVEL DOWN	MINIMUM AXLE SPACING
2440002	043500	8K	3.5"*	6"	2.1"	2.5"	32"

*3.5" O.D. 1/2" wall axle option required, available on 6K, 7K & 8K Dexter Axles

RedRider Control Kits

PART NO.	REF. NO.	DESCRIPTION
1220003	043675	CONTROL KIT, INCLUDES 12V COMPRESSOR & JR. HEIGHT CONTROL VALVE (FOR TRAILERS W/O AIR SUPPLY)
1200032*	043680	MANUAL DUMP VALVE, LOWERS SUSPENSION FOR EASIER UNLOADING/LOADING OF TRAILER
1200031*	043685	12V ELEC. DUMP VALVE, LOWERS SUSPENSION FOR EASIER UNLOADING/LOADING OF TRAILER
6330DMAE20	043725	JR. HEIGHT CONTROL VALVE ONLY (1 REQ'D PER TRAILER W/AIR SUPPLY, UP TO 3 AXLES)

*Dump valves can also be used on air-ride suspensions shown on page D-21

Attn: OEM's

Weldment Fixture (jig) available for easier, faster installations! Call your local Redneck Branch for more information. Fixture #6100018

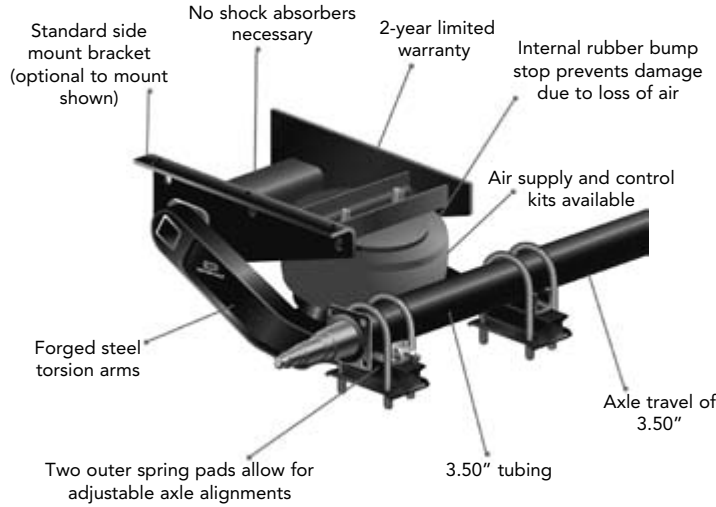
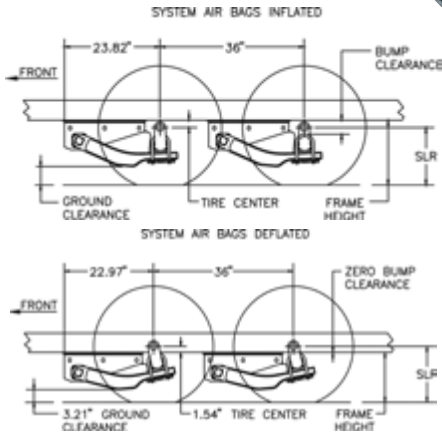




DEXTER AXLE




AIRFLEX™
LIGHT TRAILER SUSPENSION SYSTEM



SUSPENSION DIMENSIONS			
	LT235/85R16 Tire	215/75R17.5HC Tire	
Frame Height			
4" drop spindle	16.28"	15.98"	
With bags deflated	12.78"	12.48"	
Tire Center			
4" drop spindle	1.88"	1.88"	
Ground Clearance			
4" drop spindle	4.68"	4.38"	
Static Bump Clearance			
4" drop spindle	3.5"	3.56"	

All dimensions are with axle loaded to capacity and air bags inflated. For straight spindles add 4" to frame height, tire center, and ground clearance dimensions.

Difference Between Hub Face & Outside Mounting Brackets			
Axle Type	Minimum	Recommended	Maximum
D60-70 Straight	11.50"	14.00"	21.50"
D60-70 Drop	16.50"	16.50"	21.50"
D80 Straight	14.00"	15.50"	17.00"
D80 Drop	16.00"	16.00"	17.00"

- Suspension and axle come fully assembled for easy installation
- The suspension maintains a constant trailer floor height regardless of cargo weight
- The suspension isolates the cargo from road shock using air springs & Torflex® technology
- Designed for 6,000 to 8,000 lb. axle capacities
- Adjustable axle seats provided to align axle
- Bolt-on side mount brackets come standard
- Air control kits available, shown below
- Straight, 4" drop, or Nev-R-Lube™ spindle options
- Electric drum, hydraulic drum, & hydraulic disc brakes options
- 2 year limited warranty on axle & suspension

AirFlex Suspension

PART NO.	REF. NO.	DESCRIPTION
ADD-7K-AIRFLEX	022732	ADD ON FOR 7K, w/AIRFLEX, 865 OR UTG HUBS
ADD-7KHD-WALL	022736	ADD ON FOR 7K AXLE, 3.5" X .5" WALL TUBING (AIRFLEX)
ADD-8K-AIRFLEX	024977	ADD ON FOR 8K, w/AIRFLEX, 865 HUBS
AIRFLEX	043670	DEXTER AIRFLEX SUSP, 8K, 5.88" RIDE HT, 3.5" RD AXLE

AirFlex Control Kits

PART NO.	REF. NO.	DESCRIPTION
1220003	043675	CONTROL KIT, INCLUDES 12V COMPRESSOR & JR. HEIGHT CONTROL VALVE (FOR TRAILERS W/O AIR SUPPLY)
1200032*	043680	MANUAL DUMP VALVE, LOWERS SUSPENSION FOR EASIER UNLOADING/LOADING OF TRAILER
1200031*	043685	12V ELEC. DUMP VALVE, LOWERS SUSPENSION FOR EASIER UNLOADING/LOADING OF TRAILER
6330DMAE20	043725	JR. HEIGHT CONTROL VALVE ONLY (1 REQ'D PER TRAILER W/AIR SUPPLY, UP TO 3 AXLES)

*Dump valves can also be used on air-ride suspensions shown on page D-21

SUSPENSIONS

Add Air
 by Firestone

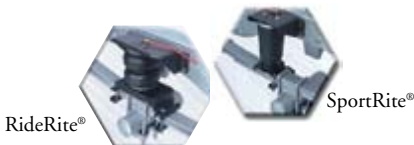


Ride-Rite® air helper springs can be installed on most light trucks, RV's and vans. Ride-Rite® air helper springs are installed between the frame of the vehicle and the suspension, providing load support through the use of air pressure.

Firestone has made a commitment to provide the best air helper spring kits in the industry. Ride-Rite has become synonymous with quality, durability and with customer support truly second to none.

Ride-Rite® / Sport-Rite® air helper springs utilize a pair of convoluted or tapered style air springs. These air springs are capable of 3,000 - 5,000 lbs.* of load carrying capacity per set. It is extremely important to remember that the air helper springs do not increase a vehicle's carrying capacity. Although the air springs are capable of lifting a great deal of weight they are intended to maximize the vehicle's load capabilities within the recommended Gross Vehicle Weight Rating.

* Do NOT exceed the vehicle's recommended Gross Vehicle Weight Rating (GVWR)



Ride Rite Suspensions*

PART NO.	REF. NO.	DESCRIPTION
AS2025**	043800	RIDERITE, 88-00GM (EXCEPT 99-00 SILVERADO)
AS2071**	043805	RIDERITE, 73-87 GM, 68-09 FORD, 69-02 DODGE (W/O 5TH WHL/GN HCH)
AS2190	043810	RIDERITE, 99-05 GM2500 (NOT HD), 01-06 1500HD (CREWCAB)
AS2250	043815	RIDERITE, 01-09 CHEV/GMC 2500HD/3500 P/U (NO DRILL APPLICATION)
AS2299	043820	RIDERITE, 03-09 DODGE P/U 2500 & 3500 SERIES (NO DRILL APPLICATION)
AS2320**	043825	SPORTRITE, 97-04 FORD F150, F250 (LESS THAN 8500GVW) & 99-07 GM 1500
AS2330	043830	RIDERITE, 99-04 FORD F250/F350 (NO DRILL APPLICATION)
AS2350	043835	RIDERITE, 04-08 FORD F150 (NO DRILL APPLICATION)
AS2398	043840	RIDERITE, 05-07 FORD F250/F350 (2WD)
AS2400	043845	RIDERITE, 05-07 FORD F250/F350 (4WD (NO DRILL APPLICATION)
AS2445	043855	RIDERITE, 07-09 TOYOTA TUNDRA (NO DRILL APPLICATION)
AS2450	043860	RIDERITE, 08-09 FORD F250/F350 W/IN-BED HITCH (NO DRILL APPLICATION)
AC2158	044055	RIDERITE CONTROL KIT FOR BOTH SPGS TOGETHER
AC2168	044060	RIDERITE CONTROL KIT FOR EACH SPG SEPARATELY, W/TANK & COILED HOSE FOR REMOTE AIRFILL/TIRE INFLATION

* Additional model applications available by special order.

** Models vary; call your local branch for specific applications.



Ride-Rite® air helper springs will:

- Keep the vehicle front end down - improve steering control, level headlight beams and improve tire wear.
- Level off-center loads - individual inflation valves allow for adjustment side-to-side and front-to-rear.
- Reduce suspension fatigue - keep leaf springs from sagging under repeated or constant load.
- Air adjustment improves the ride - allowing the air springs to be matched to the load.
- Reduce bottoming out - protective air cushion softens contact between the axle and frame.
- Increase vehicle stability - absorbing road shock, providing ideal ride conditions for passengers and load.

Basic Kit:

Everything is included for quick installation. Brackets, air springs, hardware and inflation valves for manual inflation. Average installation time is approximately 1-2 hours.



Control Kit:

Ride-Rite® control kits provide instant ride control within the cab of the vehicle. They allow quick inflation and deflation for various road and load conditions.

