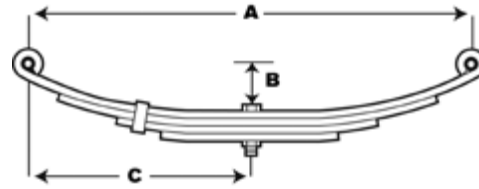


## Double Eye Springs

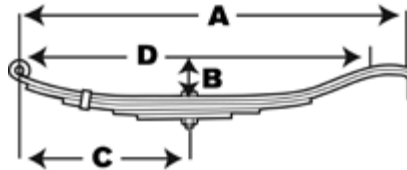
When replacing worn or broken springs, be sure to measure old springs as noted in the diagram. Your worn spring will be longer than a new spring due to wear. Be sure to call and let our professionals help you select the proper replacement.



PART NO.	REF. NO.	NO. OF LEAVES	CAPACITY	A	B	C	WIDTH	EYE DIAMETER
1020	065000	3	1000 LBS	20 1/4"	3 3/6"	10 3/16"	1 3/4"	9/16"
1724	065200	3	1750 LBS	23 1/4"	3 1/2"	11 1/2"	1 3/4"	9/16"
PR722	065420	3	1250 LBS	25 1/4"	3"	12 5/8"	1 3/4"	9/16"
PR3	065600	3	1750 LBS	25 1/4"	3"	12 5/8"	1 3/4"	9/16"
PR4B	065800	4	1750 LBS	25 1/4"	3"	12 5/8"	1 3/4"	9/16"
PR4	066000	4	2400 LBS	25 1/4"	3"	12 5/8"	1 3/4"	9/16"
PR5	066200	5	2900 LBS	25 1/4"	3"	12 5/8"	1 3/4"	9/16"
PR6	066400	6	3300 LBS	24 7/8"	3"	12 5/8"	1 3/4"	9/16"
TE30	066600	1	3000 LBS	25 1/4"	3"	12 5/8"	1 3/4"	9/16"
PR427	066800	4	1500 LBS	27"	2 3/4"	13 1/2"	1 3/4"	9/16"
PR626	067000	6	2250 LBS	26"	3 3/4"	13"	1 3/4"	9/16"

## Slipper Springs

Slipper Springs should be measured for dimensions A, B, C & D, to best determine the proper spring for replacement.



PART NO.	REF. NO.	NO. OF LEAVES	CAPACITY	A	B	C	D	WIDTH	EYE DIAMETER	BUSHING
WIC2	067200	2	500 LBS	24 1/4"	4"	11"	23 1/8"	1 3/4"	9/16"	NYLON
WIE3	067400	3	750 LBS	24 1/4"	4"	11"	23 1/8"	1 3/4"	9/16"	NYLON
WIH4	067600	4	1,000 LBS	24 1/4"	4"	11"	23 1/8"	1 3/4"	9/16"	NYLON
WID2	067800	2	1,000 LBS	30 1/4"	4 1/2"	13 1/2"	27 3/8"	1 3/4"	9/16"	NYLON
WIF3	068000	3	1,500 LBS	30 1/4"	4 1/2"	13 1/2"	27 3/8"	1 3/4"	9/16"	NYLON
WIG4	068200	4	1,750 LBS	30 1/4"	4 1/2"	13 1/2"	27 3/8"	1 3/4"	9/16"	NYLON
803T3	068400	4	2,000 LBS	26 1/8"	3"	11 3/16"	24 7/8"	2"	9/16"	NYLON
1003T3	068600	4	2,500 LBS	26 1/8"	3"	11 3/16"	24 7/8"	2"	9/16"	NYLON
E5226	068800	5	3,000 LBS	26 5/8"	3 1/2"	12"	25 1/4"	2"	9/16"	NYLON
1203T3	069000	5	3,500 LBS	26 1/8"	3"	11 3/16"	24 7/8"	2"	9/16"	NYLON
1403T3	069200	7	4,000 LBS	26 1/8"	3"	11 3/16"	24 7/8"	2"	9/16"	NYLON
E5115	069400	6	4,000 LBS	29 1/2"	3 1/2"	13 1/2"	27 1/2"	2"	9/16"	NYLON
72-10-2	069550	6	4,500 LBS	30"	3 7/8"	13 1/8"	26 7/8"	2"	5/8"	RUBBER
E8536	069800	8	5,000 LBS	29 1/2"	3 1/8"	13 1/2"	27 1/2"	2"	9/16"	NYLON
93161	070000	5	5,000 LBS	32 1/2"	4"	14"	29"	2 1/2"	3/4"	RUBBER
72-21	070200	5	5,000 LBS	30"	4"	13 1/2"	26 7/8"	2 1/2"	3/4"	BRONZE
72-77	070201	5	5,000 LBS	30"	4"	13 1/2"	26 7/8"	2 1/2"	7/8"	BRONZE
72-43-1	070250	5	5,000 LBS	30"	4"	13 3/8"	26 3/4"	3"	1"	RUBBER
72-44-1	070450	6	6,000 LBS	30"	4"	13 3/8"	26 3/4"	3"	1"	RUBBER
72-45-1	070650	7	7,500 LBS	30"	4"	13 3/8"	26 3/4"	3"	1"	RUBBER
72-48	071000	3	11,200 LBS	43 3/4"	6 1/4"	N/A	42"	3"	N/A	N/A

**NOTE:** Dimensions shown above are for identification purposes only. Allow for slight variances in dimensions, due to spring manufacturing tolerances. "Replacement in pairs" is recommended for proper axle alignment and suspension performance.

## Suspension Bushings

The table below contains the replacement bushings used in equalizers and springs of various types and styles.

PART NO.	REF. NO.	I.D.	O.D.	LENGTH	DESCRIPTION
ENP322	103775	1/2"	7/8"	1 3/4"	NYLON, SPRING EYE
ENP605	103785	9/16"	7/8"	1 3/4"	NYLON, SPRING EYE
155228	104000	1/2"	11/16"	1 3/4"	NYLON, SPRING EYE, "WI" SERIES
722106	104200	9/16"	11/16"	1 3/4"	NYLON, SPRING EYE / EQUALIZER
722107	104400	9/16"	11/16"	2"	NYLON, SPRING EYE
722108	104410	9/16"	3/4"	1 3/4"	NYLON, EQUALIZER
722109	104420	3/4"	7/8"	1 3/4"	NYLON, EQUALIZER
722109A	104425	3/4"	.91"	1 3/4"	NYLON, EQUALIZER
721590	104430	7/8"	1 1/16"	2 15/16"	NYLON, EQUALIZER
091414	104450	1"	2 1/8"	4"	RUBBER / STEEL SLEEVED, EQUALIZER, HAYES 10K
14-54	104600	9/16"	1 5/16"	2"	NYLON, SPRING EYE (2-PIECE)
14-73	104650	5/8"	1 3/8"	2 3/16"	RUBBER/STEEL SLEEVED, SPRING EYE, DX 9K
14-67	104675	3/4"	1"	2 1/2"	BRONZE, SPRING EYE, DX 10K GD
14-111	104680	7/8"	1"	2 1/2"	BRONZE, SPRING EYE, DX 10K GD
14-112	104685	3/4"	2"	2 5/8"	RUBBER/STEEL SLEEVED, DX10K GD
14-69	104700	1"	2"	3"	RUBBER/STEEL SLEEVED, SPRING EYE, DX 10K - 15K
14-51	104800	1"	1 1/4"	3"	BRONZE, SPRING EYE, DX 10K - 15K (OLD STYLE)
091413	105000	3/4"	1 3/4"	2 3/4"	RUBBER/STEEL SLEEVED, SPRING EYE, HAYES 10K



## Packaged Bushings



PART NO.	REF. NO.	DESCRIPTION	POPULARITY CODE
SP05-020	103710	NYLON, 9/16" ID, 11/16" OD, 1 3/4" LONG (QTY 8)	A
SP05-040	103720	NYLON, 9/16" ID, 11/16" OD, 2" LONG (QTY 8)	B
SP05-060	103730	NYLON, 9/16" ID, 3/4" OD, 1 3/4" LONG (QTY 6)	B
SP05-080	103740	2 PIECE NYLON, 9/16" ID, 1 5/16" OD, 2" LONG (QTY 4)	C



## Spring Center Tie Bolts

We carry the most popular replacement center tie bolts used in the industry.

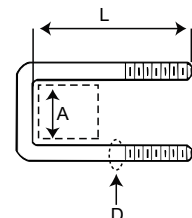
PART NO.	REF. NO.	DESCRIPTION
516-3TB	103200	5/16" X 3" SPRING CENTER TIE BOLT W/NUT
516-TBN	103230	5/16" NUT FOR SPRING CENTER TIE BOLT
38-3TB	103400	3/8" X 3" SPRING CENTER TIE BOLT W/NUT
38-5TB	103600	3/8" X 5" SPRING CENTER TIE BOLT W/NUT
38N	077600	3/8" NUT FOR SPRING CENTER TIE BOLT



## Replacement U-Bolts - Square End

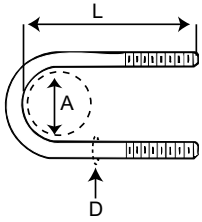
- For 1 1/2" to 2" Square Tubing

PART NO.	REF. NO.	(A) SIZE	(D) DIAMETER	(L) LENGTH
1753223	076400	1 1/2"	1/2"	5"
175130	076800	1 3/4"	9/16"	5"
175211	077200	2"	9/16"	5 3/4"



## Replacement U-Bolts - Round End

- Replacement for 2,000 lb. - 15,000 lb. Axles



PART NO.	REF. NO.	(A) SIZE	DESCRIPTION	(D) DIAMETER	(L) LENGTH
175643	072200	1 3/4"	W/NUTS FOR 2K AXLES	3/8"	4 1/4"
175668	072600	2 1/2"	W/NUTS FOR 7.5K SOLID BAR AXLES	9/16"	7 3/4"
176400	073000	2 3/8"	W/NUTS FOR 3.5K AXLES	1/2"	5 1/2"
1755892	073400	3"	W/NUTS FOR 5.2K, 6K & 7K AXLES	1/2"	7"
176500	073800	3"	W/NUTS FOR 5.2K, 6K & 7K AXLES	9/16"	7 1/4"
11-65	074200	3 1/2"	W/NUTS FOR 8K AXLES	9/16"	8"
175666	074500	3 1/2"	W/NUTS FOR 8K AXLES W/10 LEAF SPRING	9/16"	9"
11-64	074800	4"	W/LOCKNUTS FOR 9K AXLES	5/8"	8 1/8"
11-77	075200	5"	W/LOCKNUTS FOR 10K AXLES	5/8"	8 7/8"
091148	075600	5"	W/NUTS FOR HAYES 10K AXLES	5/8"	9 1/2"
11-70	076000	5"	W/LOCKNUTS FOR 12K & 15K AXLES	3/4"	9 5/8"

## U-Bolt Kits

U-Bolt Kit contents		APUBR-10	APUBR-1	APUBR-8	APUBR-9	APUBR-35
		071200	071400	071600	071800	072000
		1-3/4" Rd	2-3/8" Rd	3" Rd	3" Rd	3-1/2" Rd
<b>U-Bolts</b>						
175643LN	1-3/4" Round, 3/8" Dia., 4-1/4" Long	4	-	-	-	-
176400LN	2-3/8" Round, 1/2" Dia., 5-1/2" Long	-	4	-	-	-
1755892LN	3" Round, 1/2" Dia., 7" Long	-	-	4	-	-
176500LN	3" Round, 9/16" Dia., 7-1/4" Long	-	-	-	4	-
11-65LN	3-1/2" Round, 9/16" Dia., 8" Long	-	-	-	-	4
<b>Axle Plates</b>						
117535	1-3/4" Round axle, 1-3/4" spring	2	-	-	-	-
117595	2-3/8" Round axle, 1-3/4" spring	-	2	-	-	-
117521	3" Round axle, 1-3/4" or 2" spring	-	-	2	2	-
117581	3" Round axle, 2" spring	-	-	-	-	2
<b>Nuts</b>						
38N	3/8"-24 Hex Nut	8	-	-	-	-
12N	1/2"-20 Hex Nut	-	8	8	-	-
916N	9/16"-18 Hex Nut	-	-	-	8	8



## Packaged U-Bolts



PART NO.	REF. NO.	DESCRIPTION	POPULARITY CODES
SP01-020	071050	1 3/4" ROUND, W/NUT, 3/8" DIAMETER, 4 1/4" LONG (QTY 2)	B
SP01-040	071060	2 3/8" ROUND, W/NUT, 1/2" DIAMETER, 5 1/2" LONG (QTY 2)	A
SP01-060	071070	3" ROUND W/NUT, 1/2" DIAMETER, 7" LONG (QTY 2)	A
SP01-080	071080	3" ROUND W/NUT, 9/16" DIAMETER, 7 1/4" LONG (QTY 2)	A
SP01-100	071085	3 1/2" ROUND W/NUT, 9/16" DIAMETER, 8" LONG (QTY 2)	C
SP01-120	071090	1 1/2" SQUARE W/NUT, 1/2" DIAMETER, 5" LONG (QTY 2)	B
SP01-140	071100	1 3/4" SQUARE W/NUT, 9/16" DIA, 5" LONG (QTY 2)	B
SP01-160	071110	2" SQUARE W/NUT, 9/16" DIA, 5 3/4" LONG (QTY 2)	B

## U-Bolt Nuts

PART NO.	REF. NO.	DESCRIPTION
38N	077600	3/8"-24 U-BOLT NUT
12N	078000	1/2"-20 U-BOLT NUT
916N	078400	9/16"-18 U-BOLT NUT
6-38	078800	5/8"-11 U-BOLT LOCKNUT
6-113	100000	3/4"-10 U-BOLT LOCKNUT



## U-Bolt Axle Plates

Replacements for all axles with 1 3/4" to 5" diameter tube.

PART NO.	REF. NO.	AXLE SIZE	SPRING WIDTH	U-BOLT SIZE	AXLE TYPE
117535	079400	1 3/4" RD	1 3/4"	3/8"	2K STRAIGHT
117595	079600	2 3/8" RD	1 3/4"	1/2"	3.5K, 2K DROP
12-4	079800	2 3/8" RD	2"	1/2"	3.5K, 2K DROP
117858	080000	2 1/2" RD	2"	9/16"	7.5K SOLID BAR
117521	080200	3" RD	1 3/4" OR 2"	1/2" OR 9/16"	6K-7K, 3.5K HD
117581	080400	3 1/2" RD	1 3/4" OR 2"	9/16"	DX 8K
12-42	080600	4" RD	2"	5/8"	DX 9K
12-49	080800	5" RD	2 1/2"	5/8"	DX 10K GD & HAYES 10K
12-53	081200	5" RD	3"	5/8"	DX 10K HD
12-46	081400	5" RD	3"	3/4"	DX 12K-15K
115983	081600	1 1/2" SQ	1 3/4"	1/2"	SQUARE BAR
116308	081800	1 3/4" SQ	1 3/4"	9/16"	SQUARE BAR
117594	082000	2" SQ	1 3/4" OR 2"	9/16"	SQUARE BAR



## Shackle Straps

Shackle Straps are a popular replacement item for double eye suspensions. Available in 3 lengths. (9/16" hole)

PART NO.	REF. NO.	WIDTH	SIZE
18-11	101600	1 1/4"	2 1/4" HOLE CENTER, BULK
115052	101800	1 1/4"	2 5/8" HOLE CENTER, BULK
115208	102000	1 1/4"	3 1/8" HOLE CENTER, BULK



## Packaged Shackle Straps



PART NO.	REF. NO.	DESCRIPTION	POPULARITY CODES
SP03-020	101550	2 1/4" HOLE CENTER, 1 1/4" WIDE, 9/16" HOLE (QTY 4)	B
SP03-040	101560	2 5/8" HOLE CENTER, 1 1/4" WIDE, 9/16" HOLE (QTY 4)	A
SP03-060	101570	3 1/8" HOLE CENTER, 1 1/4" WIDE, 9/16" HOLE (QTY 4)	B



## Hanger for "WI" Series Springs

Used on 1 3/4" wide "WI" series slipper springs with 9/16" spring eye I.D.

PART NO.	REF. NO.	DESCRIPTION	TOP TO CENTER OF HOLE	BOLT SIZE
115706S	088800	REAR HANGER/CLIP	N/A	N/A
115917	089400	FRONT HANGER, 9/16" EYE	1 1/2"	9/16"

## Hangers for Double Eye Springs

Used on 1 3/4" wide springs with 9/16" spring eye I.D.

PART NO.	REF. NO.	DESCRIPTION	TOP TO CENTER OF HOLE	BOLT SIZE
93003-3X	089150	REAR HANGER, NO BUSHING, SINGLE AXLE ONLY	1 1/2"	9/16"
30-20	089200	REAR HANGER, SINGLE AXLE ONLY	.91"	9/16"
115917	089400	FRONT OR REAR HANGER	1 1/2"	9/16"
115918	089600	CENTER HANGER	2 1/2"	9/16"
28-5	089800	FRONT, CENTER, OR REAR HANGER	3 1/4"	9/16"
29-31	090000	HANGER	3 5/8"	9/16"
E4139	090200	HANGER	4 1/4"	9/16"
115919	090400	CENTER HANGER	5 7/16"	3/4"

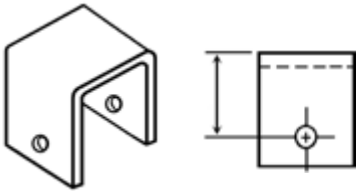


SUSPENSIONS

## Hangers for 2" Slipper Springs

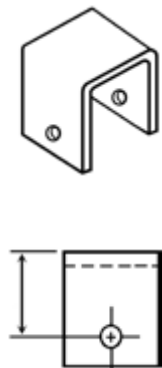
Front, Center and Rear Hangers for all applications of 2" wide slipper springs on 3,500 - 9,000 lb. axles.

PART NO.	REF. NO.	DESCRIPTION	TOP TO CENTER OF HOLE	BOLT SIZE
28-1	090600	FRONT HANGER OF H202	4 1/4"	9/16"
29-1	090800	CENTER HANGER OF H202	3 1/2"	7/8"
30-28	091000	REAR HANGER OF H202	5 1/4"	5/16"
721584	091200	FRONT HANGER OF APT6SE	3 3/4"	9/16"
721586	091400	CENTER HANGER FOR APT6SE	3 3/8"	7/8"
721585	091600	REAR HANGER FOR APT6SE	5 1/6"	9/16"
28-68-4	091780	FRONT HANGER OF HAP-105	5"	5/8"
28-9-1	091800	FRONT HANGER	5"	9/16"
29-5-1	092200	CENTER HANGER	4 1/2"	7/8"
30-68-1	092380	REAR HANGER FOR HAP-105	6 1/4"	5/16"
30-6-1	092400	REAR HANGER	6 3/8"	5/16"
29-39-4	092980	CENTER HANGER FOR HAP-205	4 1/2"	1"



## Hangers for 2 1/2" Slipper Springs

Front, Center and Rear Hanger Replacements of Dexter 10,000 lb. General Duty and Hayes 9K, 10K and 12K axles.

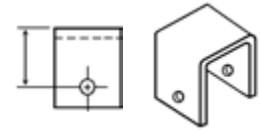


PART NO.	REF. NO.	DESCRIPTION	TOP TO CENTER OF HOLE	BOLT SIZE
28-74-2	092805	FRONT HANGER FOR H158	5 1/4"	3/4"
28-72-1	092601	LEFT FRONT HANGER FOR H157	5 1/4"	7/8"
10GDH-FTLH	092602	LEFT FRONT HANGER FOR 10GD	5 1/4"	7/8"
28-73-1	092801	RIGHT FRONT HANGER FOR H157	5 1/4"	7/8"
10GDH-FTRH	092802	RIGHT FRONT HANGER FOR 10GD	5 1/4"	7/8"
29-42-1	093100	CENTER HANGER FOR H258	5 3/8"	1"
10GDH-CTR	093001	CENTER HANGER FOR 10GD	5 3/8"	1"
30-61-1	093200	REAR HANGER FOR 10GD	4 1/2"	N/A
10GDH-REAR	093201	REAR HANGER FOR 10GD	4 1/2"	N/A
092829	094000	FRONT HANGER FOR HAYES	5 1/4"	3/4"
092920	094200	CENTER HANGER FOR HAYES	1 7/8"	1"
093026	094400	REAR HANGER FOR HAYES	6"	N/A

## Hangers for 3" Slipper Springs

PART NO.	REF. NO.	DESCRIPTION	TOP TO CENTER OF HOLE	BOLT SIZE
28-67-4	093400	FRONT HANGER FOR HAP-103	6 1/4"	1"
29-37-4	093600	CENTER HANGER FOR HAP-203 (OLD STYLE)	4 1/2"	1 1/8"
29-43-2	093605	CENTER HANGER FOR HAP-203 (NEW STYLE)	4 1/8"	1 1/8"
30-66-1	093800	REAR HANGER FOR HAP-103	7 11/16"	1/2"

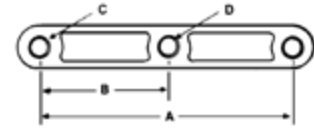
Used on Dexter 10,000 - 15,000 lb. axles.



## Straight Equalizers

PART NO.	REF. NO.	A	B	C	D	O.D.
A2251B	082200	8"	4"	9/16"	9/16"	1 3/4"
A2251B3	082400	8"	4"	9/16"	3/4"	1 3/4"

For double eye springs, the A2251B3 is used in the APT1, APTT1 hanger kits.

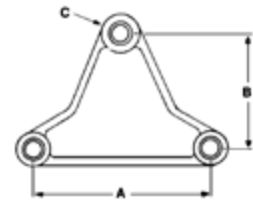


SUSPENSIONS

## Tall Triangular Equalizer

Widely used for years in the R.V. and Mobile Home industry.

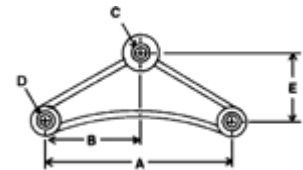
PART NO.	REF. NO.	A	B	C	O.D.
13-10	082600	6"	4"	9/16"	1 3/4"



## Curved Equalizers

The 13-104-2 Equalizer is found in AP233 Attaching Parts Kit. A2252CB is found in the APT3, APT5, APTT3 and APTT5 Attaching Parts Kits.

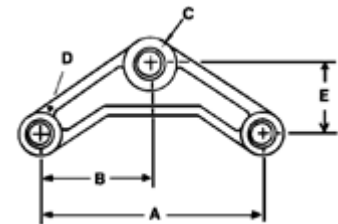
PART NO.	REF. NO.	A	B	C	D	E	O.D.
13-104-2	083100	5 5/8"	2 13/16"	9/16"	9/16"	2"	1 3/4"
A2252CB	083400	7 3/4"	3 7/8"	9/16"	9/16"	2 7/8"	1 3/4"
A2252CB34	083600	7 3/4"	3 7/8"	3/4"	9/16"	2 7/8"	1 3/4"



## Short Curved Equalizer

The 220AIT3B is found in APT4, APTT4 Hanger Kits.

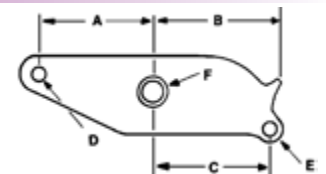
PART NO.	REF. NO.	A	B	C	D	E	O.D.
220AIT3B	083200	6 1/4"	3 1/8"	3/4"	9/16"	2"	1 3/4"



## Equalizer for 2" Slipper Springs

Used by Dexter Axle for years, this Equalizer is found in the AP202 Attaching Parts Kit.

PART NO.	REF. NO.	A	B	C	D	E	F	I.D.
13-4	083800	4 5/8"	5 1/2"	5"	9/16"	5/16"	7/8"	2 1/4"

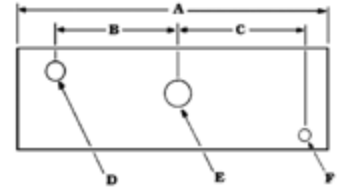


Section D-15

## Equalizers for 2" Slipper Springs

- 13-44 is found in AP216 Attaching Parts Kit.
- E5541 is formed of 5/16" material, E4541 is of 1/4" material.
- 13-117, 118, and 119 are for new style Dexter 8-9K.

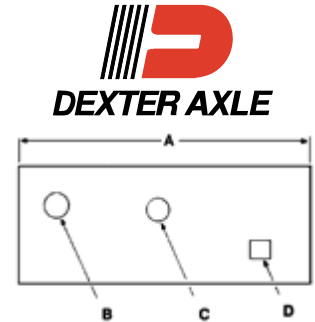
PART NO.	REF. NO.	A	B	C	D	E	F	I.D.
13-44	084000	13 1/8"	5 1/2"	6"	9/16"	15/16"	3/8"	2 3/16"
E4541	084100	12"	4 3/4"	4 5/8"	9/16"	7/8"	9/16"	2 3/16"
E5541	084200	12"	4 3/4"	4 5/8"	9/16"	7/8"	9/16"	2 3/16"
13-117-03	084220	13 1/8"	5 1/2"	5 9/16"	5/8"	15/16"	5/16"	2 3/16"
13-118-03	084240	17 3/8"	7 5/8"	7 3/4"	5/8"	15/16"	5/16"	2 3/16"
13-119-03	084260	23 1/2"	10 3/4"	10 3/4"	5/8"	15/16"	5/16"	2 3/16"



## Equalizers for 2 1/2" Slipper Springs

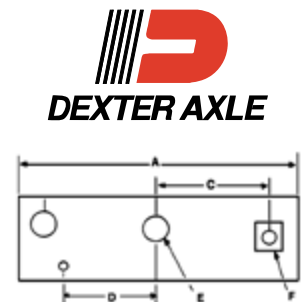
- Used on Dexter 10,000 lb. General Duty axles, w/7/8" bronze-brushed springs, or 3/4" Rubber-Bushed Springs.

Part No.	Ref. No.	Axle Spacing	A	B	C	D	Type	I.D.
13-139-3	085275	38"	14 1/4"	1 3/8"	1"	3/4"	LH/RH	2 3/4"
13-132-2	085001	38"	14 1/4"	1 3/8"	1"	7/8"	LH	2 3/4"
13-133-2	085201	38"	14 1/4"	1 3/8"	1"	7/8"	RH	2 3/4"
13-140-3	085675	42 1/4"	18 3/8"	1 3/8"	1"	3/4"	LH/RH	2 3/4"
13-134-2	085401	42 1/4"	18 3/8"	1 3/8"	1"	7/8"	LH	2 3/4"
10GDH-EQ42LH	085402	42 1/4"	18 3/8"	1 3/8"	1"	7/8"	LH	2 3/4"
13-135-2	085601	42 1/4"	18 3/8"	1 3/8"	1"	7/8"	RH	2 3/4"
10GDH-EQ42RH	085602	42 1/4"	18 3/8"	1 3/8"	1"	7/8"	RH	2 3/4"
13-141-3	086015	48 1/2"	24 5/8"	1 3/8"	1"	3/4"	LR/RH	2 3/4"
13-136-2	085801	48 1/2"	24 5/8"	1 3/8"	1"	7/8"	LH	2 3/4"
10GDH-EQ48LH	085802	48 1/2"	24 5/8"	1 3/8"	1"	7/8"	LH	2 3/4"
13-137-2	086001	48 1/2"	24 5/8"	1 3/8"	1"	7/8"	RH	2 3/4"
10GDH-EQ48RH	086002	48 1/2"	24 5/8"	1 3/8"	1"	7/8"	RH	2 3/4"



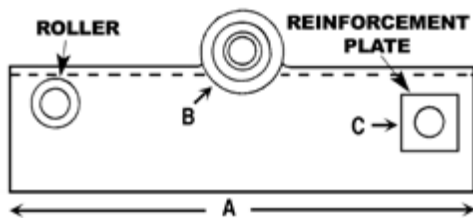
## Equalizers for 3" Slipper Springs

PART NO.	REF. NO.	AXLE SPACING	A	C	D	E	F	I.D.
13-107-7	086025	38"	14 1/4"	5"	4 1/2"	1 1/8"	1"	3 1/8"
13-108-3	086425	42 1/4"	18 3/8"	7 1/8"	6 3/4"	1 1/8"	1"	3 1/8"
13-109-3	086825	48 1/2"	24 3/4"	10 3/8"	10"	1 1/8"	1"	3 1/8"



## Equalizers for Hayes 2 1/2" Slipper Springs

- Equalizer is stamped **L** or **R** to identify. Tab lock/reinforcement plate goes to the inside of trailer.



PART NO.	REF. NO.	LH / RH	A	B	C	I.D.
09138708	087600	LH	15 3/4"	1"	3/4"	2 3/4"
09138709	087605	RH	15 3/4"	1"	3/4"	2 3/4"
09138710	087800	LH	21 3/4"	1"	3/4"	2 3/4"
09138711	087805	RH	21 3/4"	1"	3/4"	2 3/4"

## Cotter Pins and Grease Zerks

SUSPENSIONS



PART NO.	REF. NO.	SIZE	DESCRIPTION
165649	101200	1/8" X 1 3/4"	COTTER PIN
1610	101400	3/8"	1/4" STRAIGHT GREASE ZERK, 1/8" M.P.T.
61-6	101450	3/8"	1/4" 65° ANGLE GREASE ZERK, 1/8" M.P.T.

## Popular Suspension Bolts with Nuts



PART NO.	REF. NO.	DIAMETER	LENGTH	DESCRIPTION
166081	095800	9/16"	3"	SHACKLE BOLT W/NUT FOR DOUBLE EYE SPRINGS
126B2	096200	9/16"	3"	WET SHACKLE BOLT W/NUT & ZERK FOR DOUBLE EYE SPRINGS
166079	096600	9/16"	3 1/2"	SPRING EYE BOLT W/NUT FOR SLIPPER SPRINGS
126A1	097200	3/4"	3 1/2"	WET EQUALIZER BOLT W/NUT, ZERK & COTTER PIN
166078	097800	7/8"	4 11/16"	EQUALIZER BOLT W/NUT, COTTER PIN
166074	098250	7/8"	4 11/16"	WET EQUALIZER BOLT W/ LOCKNUT, ZERK PRESSED IN

## Packaged Bolts & Nuts



PART NO.	REF. NO.	DESCRIPTION	POPULARITY CODES
SP04-020	094500	9/16" X 3" SHACKLE BOLT W/NUT FOR 1 3/4" WIDE SPRINGS (QTY 4)	A
SP04-021	094505	9/16" X 3" WET SHACKLE BOLT W/ NUT & ZERK (QTY 4)	C
SP04-040	094510	9/16" X 3 1/2" SHACKLE BOLT W/NUT FOR 2" WIDE SPRINGS (QTY 4)	B
SP04-051	094515	3/4" X 3 1/2" WET EQUALIZER BOLT W/NUT, ZERK & COTTER PIN (QTY 2)	C
SP04-060	094520	7/8" X 4 11/16" EQUALIZER BOLT & NUT, W/COTTER PIN (QTY 2)	C
SP04-080	094530	7/8" X 4 11/16" EQUALIZER BOLT & NUT, W/ZERK PRESSED IN (QTY 1)	C

## Suspension Bolts

PART NO.	REF. NO.	SIZE	LENGTH	GRADE	DESCRIPTION
7-7	094600	5/16"-18	3 1/4"	2	SPRING RETAINER BOLT
7-95	098600	1/2"-20	4 1/2"	2	10K, 12K, 15K SPRING RETAINER BOLT
9163B	095600	9/16"-18	3"	5	DBL EYE SHACKLE BOLT
126B2LN	096000	9/16"-18	3"	5	DBL EYE SHACKLE BOLT W/GREASE ZERK
91635B	096400	9/16"-18	3 1/2"	5	SLIPPER SPRING SHACKLE BOLT
7-181	096825	5/8"-11	4"	5	9K SPRING EYE BOLT
126A1LN	097000	3/4"-16	3 1/2"	5	EQUALIZER CENTER BOLT W/GREASE ZERK
7-264	098775	3/4"-10	4 1/2"	5	10GD RUBBER BUSHED SPRING EYE BOLT
7-135-2	098800	3/4"-10	4 1/2"	5	10K GD SPRING EYE BOLT W/GREASE ZERK
090747	099000	3/4"-16	4 1/2"	5	10K 12K HAYES SPRING EYE BOLT
7845B	097600	7/8"-9	4 11/16"	2	EQUALIZER CENTER BOLT
7-260-2	099801	7/8"-9	4 1/2"	2	10K GD SPRING EYE BOLT
7-1-1	098225	7/8"-9	4 5/8"	2	EQUALIZER CENTER BOLT W/GREASE ZERK
7-182	098450	1"-8	5"	5	9K EQUALIZER CENTER BOLT
7-169	099250	1"-8	5 1/2"	5	10K, 12K, 15K DEXTER SPRING EYE BOLT
7-136-2	099200	1"-8	5 7/8"	5	10K GD EQUALIZER CENTER BOLT
090746	099600	1"-14	5 7/8"	5	10K, 12K HAYES EQUALIZER CENTER BOLT
7-170	099650	1 1/8"-7	6"	5	10K, 12K, 15K DXTR EQUALIZER CNTR BOLT



SUSPENSIONS

## Suspension Nuts



PART NO.	REF. NO.	SIZE	DESCRIPTION
6-11	094800	5/16"-18	HEX NUT FOR 7-7 KEEPER BOLT
38N	077600	3/8"-24	U-BOLT NUT FOR 175643LN U-BOLTS
12N	078000	1/2"-20	U-BOLT NUT FOR 176400LN, 1755892LN
916DLN	096800	9/16"-18	HEX LOCKNUT FOR 91638, 91635B SHACKLE BOLTS
916N	078400	9/16"-18	U-BOLT NUT FOR 176500LN, 11-65N U-BOLTS
6-38	078800	5/8"-11	LOCKNUT FOR 11-64LN/11-77LN U-BOLT, 7-181 SPG BOLT
165093	097400	3/4"-16	CASTLE NUT FOR 126A1LN EQUALIZER BOLT
6-113	100000	3/4"-10	LOCKNUT FOR 7-135-2 SPG BOLT & 11-70LN U-BOLT
090637	100400	3/4"-16	LOCKNUT FOR HAYES 090747 10K SPRING EYE BOLT
78CN	098400	7/8"-9	CASTLE NUT FOR 7845B EQUALIZER BOLT
6-111	098425	7/8"-9	LOCKNUT FOR 7-1-1 & 7-260-2 BOLTS
6-112	100600	1"-8	LOCKNUT FOR 7/182, 7/169 BOLTS
090636	100800	1"-14	LOCKNUT FOR HAYES 10K EQUALIZER BOLT
6-72	101000	1 1/8"-7	LOCKNUT FOR 10K, 12K, 15, 7-170 EQUALIZER BOLT