

## Suspension Bushings

The table below contains the replacement bushings used in equalizers and springs of various types and styles.

PART NO.	REF. NO.	I.D.	O.D.	LENGTH	DESCRIPTION
ENP322	103775	1/2"	7/8"	1 3/4"	NYLON, SPRING EYE
ENP605	103785	9/16"	7/8"	1 3/4"	NYLON, SPRING EYE
155228	104000	1/2"	11/16"	1 3/4"	NYLON, SPRING EYE, "WI" SERIES
722106	104200	9/16"	11/16"	1 3/4"	NYLON, SPRING EYE / EQUALIZER
722107	104400	9/16"	11/16"	2"	NYLON, SPRING EYE
722108	104410	9/16"	3/4"	1 3/4"	NYLON, EQUALIZER
722109	104420	3/4"	7/8"	1 3/4"	NYLON, EQUALIZER
722109A	104425	3/4"	.91"	1 3/4"	NYLON, EQUALIZER
721590	104430	7/8"	1 1/16"	2 15/16"	NYLON, EQUALIZER
091414	104450	1"	2 1/8"	4"	RUBBER / STEEL SLEEVED, EQUALIZER, HAYES 10K
14-54	104600	9/16"	1 5/16"	2"	NYLON, SPRING EYE (2-PIECE)
14-73	104650	5/8"	1 3/8"	2 3/16"	RUBBER/STEEL SLEEVED, SPRING EYE, DX 9K
14-67	104675	3/4"	1"	2 1/2"	BRONZE, SPRING EYE, DX 10K GD
14-111	104680	7/8"	1"	2 1/2"	BRONZE, SPRING EYE, DX 10K GD
14-112	104685	3/4"	2"	2 5/8"	RUBBER/STEEL SLEEVED, DX10K GD
14-69	104700	1"	2"	3"	RUBBER/STEEL SLEEVED, SPRING EYE, DX 10K - 15K
14-51	104800	1"	1 1/4"	3"	BRONZE, SPRING EYE, DX 10K - 15K (OLD STYLE)
091413	105000	3/4"	1 3/4"	2 3/4"	RUBBER/STEEL SLEEVED, SPRING EYE, HAYES 10K



## Packaged Bushings



PART NO.	REF. NO.	DESCRIPTION	POPULARITY CODE
SP05-020	103710	NYLON, 9/16" ID, 11/16" OD, 1 3/4" LONG (QTY 8)	A
SP05-040	103720	NYLON, 9/16" ID, 11/16" OD, 2" LONG (QTY 8)	B
SP05-060	103730	NYLON, 9/16" ID, 3/4" OD, 1 3/4" LONG (QTY 6)	B
SP05-080	103740	2 PIECE NYLON, 9/16" ID, 1 5/16" OD, 2" LONG (QTY 4)	C



## Spring Center Tie Bolts

We carry the most popular replacement center tie bolts used in the industry.

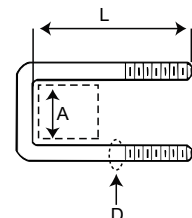
PART NO.	REF. NO.	DESCRIPTION
516-3TB	103200	5/16" X 3" SPRING CENTER TIE BOLT W/NUT
516-TBN	103230	5/16" NUT FOR SPRING CENTER TIE BOLT
38-3TB	103400	3/8" X 3" SPRING CENTER TIE BOLT W/NUT
38-5TB	103600	3/8" X 5" SPRING CENTER TIE BOLT W/NUT
38N	077600	3/8" NUT FOR SPRING CENTER TIE BOLT



## Replacement U-Bolts - Square End

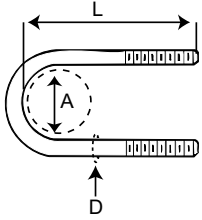
- For 1 1/2" to 2" Square Tubing

PART NO.	REF. NO.	(A) SIZE	(D) DIAMETER	(L) LENGTH
1753223	076400	1 1/2"	1/2"	5"
175130	076800	1 3/4"	9/16"	5"
175211	077200	2"	9/16"	5 3/4"



## Replacement U-Bolts - Round End

- Replacement for 2,000 lb. - 15,000 lb. Axles



PART NO.	REF. NO.	(A) SIZE	DESCRIPTION	(D) DIAMETER	(L) LENGTH
175643	072200	1 3/4"	W/NUTS FOR 2K AXLES	3/8"	4 1/4"
175668	072600	2 1/2"	W/NUTS FOR 7.5K SOLID BAR AXLES	9/16"	7 3/4"
176400	073000	2 3/8"	W/NUTS FOR 3.5K AXLES	1/2"	5 1/2"
1755892	073400	3"	W/NUTS FOR 5.2K, 6K & 7K AXLES	1/2"	7"
176500	073800	3"	W/NUTS FOR 5.2K, 6K & 7K AXLES	9/16"	7 1/4"
11-65	074200	3 1/2"	W/NUTS FOR 8K AXLES	9/16"	8"
175666	074500	3 1/2"	W/NUTS FOR 8K AXLES W/10 LEAF SPRING	9/16"	9"
11-64	074800	4"	W/LOCKNUTS FOR 9K AXLES	5/8"	8 1/8"
11-77	075200	5"	W/LOCKNUTS FOR 10K AXLES	5/8"	8 7/8"
091148	075600	5"	W/NUTS FOR HAYES 10K AXLES	5/8"	9 1/2"
11-70	076000	5"	W/LOCKNUTS FOR 12K & 15K AXLES	3/4"	9 5/8"

## U-Bolt Kits

U-Bolt Kit contents		APUBR-10	APUBR-1	APUBR-8	APUBR-9	APUBR-35
		071200	071400	071600	071800	072000
		1-3/4" Rd	2-3/8" Rd	3" Rd	3" Rd	3-1/2" Rd
<b>U-Bolts</b>						
175643LN	1-3/4" Round, 3/8" Dia., 4-1/4" Long	4	-	-	-	-
176400LN	2-3/8" Round, 1/2" Dia., 5-1/2" Long	-	4	-	-	-
1755892LN	3" Round, 1/2" Dia., 7" Long	-	-	4	-	-
176500LN	3" Round, 9/16" Dia., 7-1/4" Long	-	-	-	4	-
11-65LN	3-1/2" Round, 9/16" Dia., 8" Long	-	-	-	-	4
<b>Axle Plates</b>						
117535	1-3/4" Round axle, 1-3/4" spring	2	-	-	-	-
117595	2-3/8" Round axle, 1-3/4" spring	-	2	-	-	-
117521	3" Round axle, 1-3/4" or 2" spring	-	-	2	2	-
117581	3" Round axle, 2" spring	-	-	-	-	2
<b>Nuts</b>						
38N	3/8"-24 Hex Nut	8	-	-	-	-
12N	1/2"-20 Hex Nut	-	8	8	-	-
916N	9/16"-18 Hex Nut	-	-	-	8	8



## Packaged U-Bolts



PART NO.	REF. NO.	DESCRIPTION	POPULARITY CODES
SP01-020	071050	1 3/4" ROUND, W/NUT, 3/8" DIAMETER, 4 1/4" LONG (QTY 2)	B
SP01-040	071060	2 3/8" ROUND, W/NUT, 1/2" DIAMETER, 5 1/2" LONG (QTY 2)	A
SP01-060	071070	3" ROUND W/NUT, 1/2" DIAMETER, 7" LONG (QTY 2)	A
SP01-080	071080	3" ROUND W/NUT, 9/16" DIAMETER, 7 1/4" LONG (QTY 2)	A
SP01-100	071085	3 1/2" ROUND W/NUT, 9/16" DIAMETER, 8" LONG (QTY 2)	C
SP01-120	071090	1 1/2" SQUARE W/NUT, 1/2" DIAMETER, 5" LONG (QTY 2)	B
SP01-140	071100	1 3/4" SQUARE W/NUT, 9/16" DIA, 5" LONG (QTY 2)	B
SP01-160	071110	2" SQUARE W/NUT, 9/16" DIA, 5 3/4" LONG (QTY 2)	B

## U-Bolt Nuts

PART NO.	REF. NO.	DESCRIPTION
38N	077600	3/8"-24 U-BOLT NUT
12N	078000	1/2"-20 U-BOLT NUT
916N	078400	9/16"-18 U-BOLT NUT
6-38	078800	5/8"-11 U-BOLT LOCKNUT
6-113	100000	3/4"-10 U-BOLT LOCKNUT



## U-Bolt Axle Plates

Replacements for all axles with 1 3/4" to 5" diameter tube.

PART NO.	REF. NO.	AXLE SIZE	SPRING WIDTH	U-BOLT SIZE	AXLE TYPE
117535	079400	1 3/4" RD	1 3/4"	3/8"	2K STRAIGHT
117595	079600	2 3/8" RD	1 3/4"	1/2"	3.5K, 2K DROP
12-4	079800	2 3/8" RD	2"	1/2"	3.5K, 2K DROP
117858	080000	2 1/2" RD	2"	9/16"	7.5K SOLID BAR
117521	080200	3" RD	1 3/4" OR 2"	1/2" OR 9/16"	6K-7K, 3.5K HD
117581	080400	3 1/2" RD	1 3/4" OR 2"	9/16"	DX 8K
12-42	080600	4" RD	2"	5/8"	DX 9K
12-49	080800	5" RD	2 1/2"	5/8"	DX 10K GD & HAYES 10K
12-53	081200	5" RD	3"	5/8"	DX 10K HD
12-46	081400	5" RD	3"	3/4"	DX 12K-15K
115983	081600	1 1/2" SQ	1 3/4"	1/2"	SQUARE BAR
116308	081800	1 3/4" SQ	1 3/4"	9/16"	SQUARE BAR
117594	082000	2" SQ	1 3/4" OR 2"	9/16"	SQUARE BAR



SUSPENSIONS

## Shackle Straps

Shackle Straps are a popular replacement item for double eye suspensions. Available in 3 lengths. (9/16" hole)

PART NO.	REF. NO.	WIDTH	SIZE
18-11	101600	1 1/4"	2 1/4" HOLE CENTER, BULK
115052	101800	1 1/4"	2 5/8" HOLE CENTER, BULK
115208	102000	1 1/4"	3 1/8" HOLE CENTER, BULK



## Packaged Shackle Straps

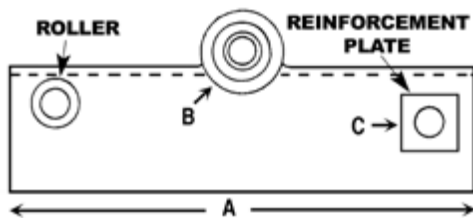


PART NO.	REF. NO.	DESCRIPTION	POPULARITY CODES
SP03-020	101550	2 1/4" HOLE CENTER, 1 1/4" WIDE, 9/16" HOLE (QTY 4)	B
SP03-040	101560	2 5/8" HOLE CENTER, 1 1/4" WIDE, 9/16" HOLE (QTY 4)	A
SP03-060	101570	3 1/8" HOLE CENTER, 1 1/4" WIDE, 9/16" HOLE (QTY 4)	B



## Equalizers for Hayes 2 1/2" Slipper Springs

- Equalizer is stamped **L** or **R** to identify. Tab lock/reinforcement plate goes to the inside of trailer.



PART NO.	REF. NO.	LH / RH	A	B	C	I.D.
09138708	087600	LH	15 3/4"	1"	3/4"	2 3/4"
09138709	087605	RH	15 3/4"	1"	3/4"	2 3/4"
09138710	087800	LH	21 3/4"	1"	3/4"	2 3/4"
09138711	087805	RH	21 3/4"	1"	3/4"	2 3/4"

## Cotter Pins and Grease Zerks



PART NO.	REF. NO.	SIZE	DESCRIPTION
165649	101200	1/8" X 1 3/4"	COTTER PIN
1610	101400	3/8"	1/4" STRAIGHT GREASE ZERK, 1/8" M.P.T.
61-6	101450	3/8"	1/4" 65° ANGLE GREASE ZERK, 1/8" M.P.T.

## Popular Suspension Bolts with Nuts



PART NO.	REF. NO.	DIAMETER	LENGTH	DESCRIPTION
166081	095800	9/16"	3"	SHACKLE BOLT W/NUT FOR DOUBLE EYE SPRINGS
126B2	096200	9/16"	3"	WET SHACKLE BOLT W/NUT & ZERK FOR DOUBLE EYE SPRINGS
166079	096600	9/16"	3 1/2"	SPRING EYE BOLT W/NUT FOR SLIPPER SPRINGS
126A1	097200	3/4"	3 1/2"	WET EQUALIZER BOLT W/NUT, ZERK & COTTER PIN
166078	097800	7/8"	4 11/16"	EQUALIZER BOLT W/NUT, COTTER PIN
166074	098250	7/8"	4 11/16"	WET EQUALIZER BOLT W/ LOCKNUT, ZERK PRESSED IN

## Packaged Bolts & Nuts



PART NO.	REF. NO.	DESCRIPTION	POPULARITY CODES
SP04-020	094500	9/16" X 3" SHACKLE BOLT W/NUT FOR 1 3/4" WIDE SPRINGS (QTY 4)	A
SP04-021	094505	9/16" X 3" WET SHACKLE BOLT W/ NUT & ZERK (QTY 4)	C
SP04-040	094510	9/16" X 3 1/2" SHACKLE BOLT W/NUT FOR 2" WIDE SPRINGS (QTY 4)	B
SP04-051	094515	3/4" X 3 1/2" WET EQUALIZER BOLT W/NUT, ZERK & COTTER PIN (QTY 2)	C
SP04-060	094520	7/8" X 4 11/16" EQUALIZER BOLT & NUT, W/COTTER PIN (QTY 2)	C
SP04-080	094530	7/8" X 4 11/16" EQUALIZER BOLT & NUT, W/ZERK PRESSED IN (QTY 1)	C