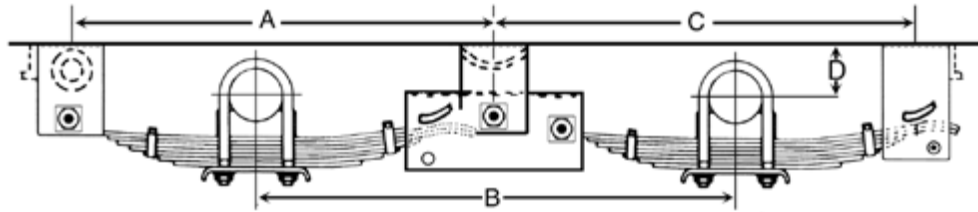


Dual Wheel Hanger Locations Chart



USING THIS KIT:	AXLE CAPACITY	A	B	C	D*
HAP-105-00 & HAP-205-01	9K	32.4"	38"	32.9"	4.87"
HAP-105-00 & HAP-205-02	9K	34.6"	42.25"	35"	4.87"
HAP-105-00 & HAP-205-03	9K	37.7"	48.5"	38.1"	4.87"
HAP-158-00 & HAP-258-01	10K GD	33"	38"	32.4"	4.99"
10GDH-K157 & 10GDH-K257-2	10K GD	35.1"	42.25"	34.6"	4.99"
HAP-158-00 & HAP-258-02	10K GD	35.1"	42.25"	34.6"	4.99"
10GDH-K157 & 10GDH-K257-3	10K GD	38.3"	48.5"	37.7"	4.99"
HAP-158-00 & HAP-258-03	10K GD	38.3"	48.5"	37.7"	4.99"
HAP-103-00 & HAP-203-01	10K-15K	33"	38"	32.4"	5.49"
HAP-103-00 & HAP-203-02	10K-15K	35.1"	42.25"	34.6"	5.49"
HAP-103-00 & HAP-203-03	10K-15K	38.3"	48.5"	37.7"	5.49"

* Ride height dimensions are at rated load capacity of suspension

9,000 – 15,000 lb. Axle Spring Hanger Recommended Reinforcements



CROSS FRAME HANGER REINFORCEMENT

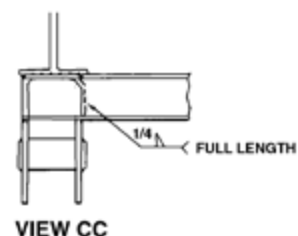
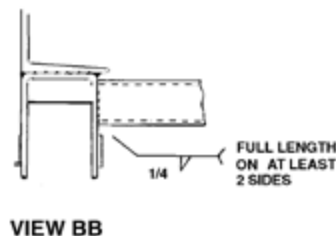
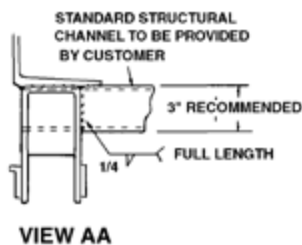
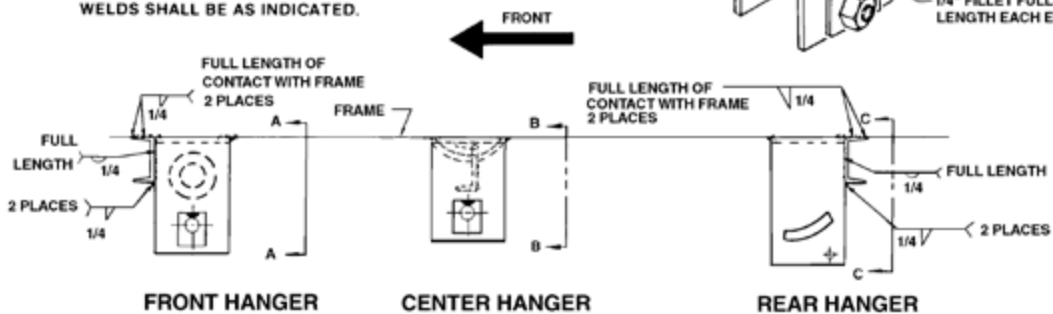
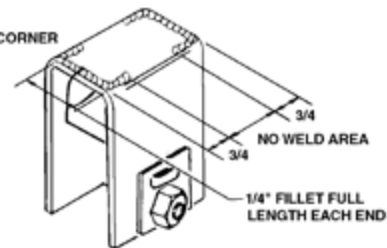
CROSS FRAME REINFORCEMENT BETWEEN SPRING AND EQUALIZER HANGER BRACKETS ASSURES FULL LOAD CARRYING CAPABILITY OF THE AXLE MOUNTED STRUCTURE.

STANDARD THREE INCH STRUCTURAL CHANNEL IS SUGGESTED FOR REINFORCEMENT MEMBERS.

WELDS SHALL BE AS INDICATED.

RECOMMENDED HANGER WELDING PROCEDURE

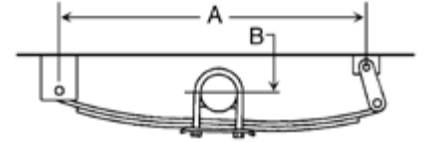
WELD AROUND CORNER AS SHOWN



Hangar Locations Chart

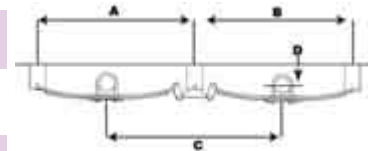
USING THIS HANGER KIT:	W/THIS SPRING SET(S):	A	B	AXLE DIAMETER
APS3SE	WIC2, WIE3	23"	3 3/4"	1 3/4"
APS3SE	WID2, WIF3, WIG4	28"	4"	1 3/4"
APS1	1020	20"	4 1/2"	1 3/4"
APS1	PR722, 3, 4, 4B, 5, 6	25 3/4"	4 1/4"	2 3/8"
APS3	1020	20"	4 1/2"	1 3/4"
APS3	PR722, 3, 4, 4B, 5, 6	25 3/4"	4"	2 3/8"
APS4	1020	20"	5 1/2"	1 3/4"
APS4	PR722, 3, 4, 4B, 5, 6	25 3/4"	5"	2 3/8"
APS5	1020	20"	5 3/8"	1 3/4"
APS5	PR722, 3, 4, 4B, 5, 6	25 3/4"	4 3/4"	2 3/8"
APS6SE	803T3, 1203T3, 1403T3	25"	4 3/4"	3"
APS6SE	E5226	26"	5"	3"
APS6SE	E5115	28"	5"	3"

Single Axles

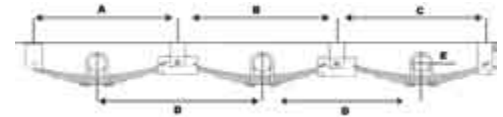


USING THIS HANGER KIT:	W/THIS SPRING SET(S):	A	B	C	D*	AXLE DIAMETER
APT1	1020	24 3/4"	24 3/4"	29 1/2"	4 1/2"	1 3/4"
APT1	PR722, 3, 4, 4B, 5, 6	29 1/2"	29 1/2"	34"	4"	2 3/8"
APT3	1020	24 3/4"	24 3/4"	30"	3 3/4"	1 3/4"
APT3	PR722, 3, 4, 4B, 5, 6	29 1/2"	29 1/2"	33 1/2"	3 1/2"	2 3/8"
APT5	1020	24 3/4"	24 3/4"	29 1/2"	5"	1 3/4"
APT5	PR722, 3, 4, 4B, 5, 6	29 1/2"	29 1/2"	33 1/2"	4 1/2"	3"
AP233/H248	1020	25"	25"	29"	5"	1 3/4"
AP233/H248	PR722, 3, 4, 4B, 5, 6	29 1/2"	29 1/2"	34"	4 1/2"	2 3/8"
APT6SE	E5226	29 3/4"	29 3/4"	34 1/2"	4 3/4"	3"
APT6SE-GS	E5226	29 3/4"	29 3/4"	34 1/2"	4 3/4"	3"
APT6SE	803T3, 1203T3, 1403T3	28 1/2"	29 1/2"	33"	4 1/2"	3"
APT6SE-GS	803T3, 1203T3, 1403T3	28 1/2"	29 1/2"	33"	4 1/2"	3"
APT6SE	E5115	32"	32"	36 3/4"	4 3/4"	3"
APT6SE-GS	E5115	32"	32"	36 3/4"	4 3/4"	3"
AP202/H202	803T3, 1203T3, 1403T3	28 3/4"	28 3/4"	33 1/2"	5 1/4"	3"
AP202/H202	E5226	29 3/4"	29 3/4"	34 1/2"	5"	3"
AP202/H202	E5115	32 1/2"	32 1/2"	36 3/4"	4 3/4"	3"
AP216/H202	803T3, 1203T3, 1403T3	30 1/2"	30 1/2"	36"	5"	3"
AP216/H202	E5226	31 1/2"	31 1/2"	37"	5"	3"
AP216/H202	E5115	33 3/4"	33 3/4"	39"	5"	3"

Tandem Axles



Triple Axle



USING THIS HANGER KIT:	W/THIS SPRING SET(S):	A	B	C	D	E*	AXLE DIAMETER
APTT1	1020	24 3/4"	29"	24 3/4"	28 1/2"	4 1/2"	1 3/4"
APTT1	PR722, 3, 4, 4B, 5, 6	29 1/2"	34"	29 1/2"	34"	4"	2 3/8"
APTT3	1020	24 3/4"	29"	24 3/4"	28 1/2"	4 1/2"	1 3/4"
APTT3	PR722, 3, 4, 4B, 5, 6	29 1/2"	34"	29 1/2"	34"	3 1/2"	2 3/8"
APTT5	1020	24 3/4"	29"	24 3/4"	28 1/2"	4 1/2"	1 3/4"
APTT5	PR722, 3, 4, 4B, 5, 6	29 1/2"	34"	29 1/2"	34"	5"	2 2/8"
APTT6SE	803T3, 1203T3, 1403T3	29"	33 1/2"	29"	33 1/2"	4 3/4"	3"
APTT6SE	E5226	29 1/2"	34"	29 1/2"	34"	4 3/4"	3"
APTT6SE	E5115	32"	36 1/2"	32"	36 3/4"	4 3/4"	3"

*All dimensions shown should be considered as "zero load" on suspensions, without weight of trailer or cargo. Allow 1.5" deflection at rated capacity of spring for approximate full load dimension and 3" above tires beyond that point for "maximum bump clearance." For best suspension performance, allow 2-2.5" clearance above top of axle to bottom of frame. Use of "bump stops" is recommended above 2.5" clearance.