

Center Caps



Many people want to add the “finishing touch” to their wheels. One sure way is to add a Center Cap. Available in chrome-plated steel or stainless steel, this unique design can be used with standard axles or with E-Z lube axles, by simply removing a replaceable plug.

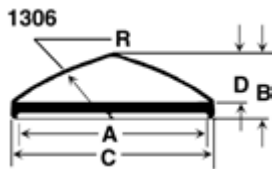


PART NO.	REF. NO.	DESCRIPTION	FINISH	WHEEL CENTER PILOT SIZE
CCP-60C	335650	ABS CENTER CAP PLUG ONLY	CHROME	N/A
295EZ	335750	CENTER CAP W/PLUG	CHROME	2.95"
319EZ	336005	CENTER CAP W/PLUG	CHROME	3.19"
319EZ-SS	336020	CENTER CAP W/PLUG	STAINLESS STEEL	3.19"
330EZ	336170	CENTER CAP W/PLUG	CHROME	3.30"
425EZ	336410	CENTER CAP W/PLUG	CHROME	4.25"
425EZ-SS	336450	CENTER CAP W/PLUG	STAINLESS STEEL	4.25"
482EZ	336750	CENTER CAP W/PLUG	CHROME	4.82"
490EZ-SS	336815	CENTER CAP W/PLUG	STAINLESS STEEL	4.90"
5125EZ	336825	CENTER CAP W/PLUG	CHROME	5.125"
5125EZ-SS	336830	CENTER CAP W/PLUG	STAINLESS STEEL	5.125"

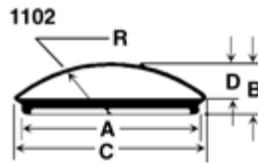
TIRES & WHEELS

Chrome Hub Caps

Chrome Hub Caps have been an industry standard for many years. They are a fine choice to complement O.E.M. design wheels.

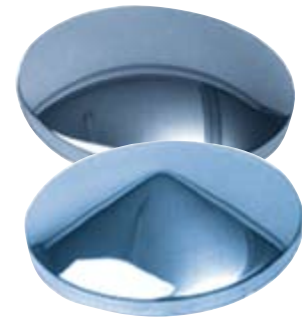


A = Flange diameter (I.D.)
 B = Overall Height
 C = Overall Width
 D = Crown Height
 R = Crown Radius



A = Flange diameter (O.D.)
 B = Overall Height
 C = Overall Width
 D = Crown Height
 R = Crown Radius

PART NO.	REF. NO.	WHEEL SIZE	A	B	C	D	R
1102	333700	8, 12, 13-4 BOLT	7.66	2.56	8.25	1.97	5.50
1302	333800	15", 5 ON 4.5"	8.74	2.41	9.03	1.60	7.13
1306	334000	15	10.2	3.05	10.62	2.37	CONE
1308	334600	13, 14, 15	9.23	2.62	9.62	1.87	7.00
1309	335000	16, 16.5	11.66	2.81	12.22	2.12	11.00



Chrome Nuts



12CLN



12CLN-L

916CLN



These popular wheel nuts fit 1/2" or 9/16" diameter studs.

PART NO.	REF. NO.	DESCRIPTION
12CLN	337000	1/2" CHROME BULGE STYLE WHEEL NUT W/RIGHT HAND THREAD
12CLN-L	337005	1/2" CHROME LUG NUT, 1 3/4" LONG, BULGE STYLE
916CLN	337020	9/16" CHROME ACORN WHEEL NUT W/ RIGHT HAND THREAD

Lug Wrenches

These lug wrenches offer versatility and great value. Both are chrome plated for long lasting durability and good looks. The 20" Cross Lug Wrench fits 17mm, 3/4", 13/16" and 7/8" nuts.

The telescoping Power Lug Wrench includes 2 reversible sockets that fit 13/16", 7/8", 17mm & 19mm nuts.



PART NO.	REF. NO.	DESCRIPTION
LW433	333375	20" CROSS LUG WRENCH (17MM,3/4",13/16",7/8")
LW405	333380	POWER LUG WRENCH W/COMBO SOCKETS13/16,7/8&17-19MM

TIRES & WHEELS

Valve Stems

Every wheel needs a stem and we have the one you need. A metal valve stem is required when inflation pressure exceeds 65 PSI.



PART NO.	REF. NO.	DESCRIPTION
TR413	337200	(SMALL BASE - .453" HOLE) RUBBER SNAP-IN 65 PSI MAX
TR415	337400	(LG. BASE - .625" HOLE) RUBBER SNAP-IN 65 PSI MAX
TR416	337600	METAL FOR PRESSURES OVER 100 PSI (.453" & .625" HOLES)
501SW	337650	METAL, OUTER MOUNT FOR ALUMINUM WHEELS W/PRESSURE OVER 100 PSI (.453" & .625" HOLES)
TR572	337700	METAL, 3 3/4" LONG, PRESSURE OVER 100 PSI (LG. BASE, .625" HOLE)
TR600	337750	(SMALL BASE, .453" HOLE) METAL W/RUBBER SNAP-IN UP TO 100 PSI
TR600C	337755	(SMALL BASE, .453" HOLE) RUBBER/METAL SNAP-IN W/CHROME SLEEVE & CAP, UP TO 100 PSI
TR801	337800	(LG. BASE, .652" HOLE) METAL W/RUBBER SNAP-IN/UP TO 100 PSI

Packaged Wheel Locks



PART NO.	REF. NO.	DESCRIPTION
RG01-150	139980	1/2" WHEEL LOCK SET, INCLUDES 2 LOCKS & 1 KEY

Slime Tire Sealant & Supplies



Slime Super Duty Tire Sealant has been specially formulated for use in tubeless tires. Once installed into the tire, Slime will instantly seal punctures in the tread area up to 1/4".

- Non Aerosol
- Non Toxic
- Water Soluble
- Non Flammable
- Lasts up to 2 years

HOW SLIME WORKS

Slime is a fiber based formula that remains liquid inside the tire. When a puncture happens, escaping air forces Slime into the hole, where it forms a long lasting, flexible plug. Slime will not corrode rims or damage tires in any way.



TIRES & WHEELS



SDS-1000/06
32 oz.



SDS-500/06
16 oz.



SDS-250/06
8 oz.



SDSB-1G/02
1 Gal.



CRK0305

Combines a 16 oz. bottle of Slime and a 300 psi, 12v. air compressor; all in a zippered vinyl case.



S2040

PART NO.	REF. NO.	DESCRIPTION
SDS-250/06	333210	SUPER DUTY SLIME TIRE SEALANT, 8 OZ
SDS-500/06	333220	SUPER DUTY SLIME TIRE SEALANT, 16 OZ
SDS-1000/06	333230	SUPER DUTY SLIME TIRE SEALANT, 32 OZ
SDSB-1G/02	333240	SUPER DUTY SLIME TIRE SEALANT, 1GAL JUG W/PUMP
S2040	333360	SLIME DELUXE TIRE REAMER/PLUGGER KIT
CRK0305	333370	SMART SPAIR TIRE REPAIR KIT W/SLIME & AIR PUMP