

## Bolster and Bunk Brackets

For boat trailers and boat lifts, the 1-piece adjustable bracket mounts the Bolster vertically and the 2-piece adjustable bracket mounts Bunk boards at an angle. The brackets provide additional support and ease in loading and unloading boats. Zinc coating protects against corrosion.



294



109

PART NO.	REF. NO.	OVERALL LENGTH	WIDTH	PIECES
106	407000	9 3/8"	2"	1
109	407200	11 3/4"	2"	1
264	407400	8"	2 1/2"	2
294	407600	10"	2 1/2"	2
284	407800	12"	2 1/2"	2
216	407900	REPL TOP ANGLE FOR 264, 294, & 284 ASSEMBLIES		
264B	407410	REPL BOTTOM BRACKET FOR 264 ASSEMBLY		
294B	407610	REPL BOTTOM BRACKET FOR 294 ASSEMBLY		
284B	407810	REPL BOTTOM BRACKET FOR 284 ASSEMBLY		

## Roller Brackets

Universal Roller Brackets will accommodate any size roller length. The One-Piece Bracket is for 12" rollers only. Both Brackets feature a five inch slot, which allows vertical adjustment for stabilizing boat on trailer, and zinc coating to protect against corrosion. Both use a 5/8" Roller Shaft (#135) and Pal Nuts (#1310).



400L & 400R



1200

PART NO.	REF. NO.	DESCRIPTION
400L	408000	UNIVERSAL BRACKET, LH SIDE
400R	408200	UNIVERSAL BRACKET, RH SIDE
1200	408300	1-PIECE BRACKET FOR 12" ROLLERS

## Steel Roller Shaft and Pal Nuts

Steel Roller Shaft supports and allows free turning of rollers. Pal Nuts are zinc plated and attach to the ends of the steel shaft to retain the roller within the Universal Roller Brackets (#400L & #400R) and One-Piece Bracket (#1200).



1310



135

PART NO.	REF. NO.	DESCRIPTION
135	408400	STEEL SHAFT 5/8" X 13 1/2"
1310	408600	PAL NUT 5/8", USE W/135 SHAFT

## Rubber Side Guide Roller and Cap

Rubber Side Guide Roller and Cap help center the boat on the trailer, preventing damage to fenders and taillight brackets.



836



305

PART NO.	REF. NO.	DESCRIPTION	DIMENSIONS	I.D. HOLE
305	406600	RUBBER END CAP	2 1/2"	5/8"
836	406800	SIDE GUIDE RUBBER ROLLER	2 1/2" X 9"	5/8"

## Rubber Bow, Deep "V" Keel and Spool-Type Keel Rollers

The Bow Roller acts as a bow stop for a boat and is normally used with a trailer's winch stand. Deep "V" Keel Roller is designed to support the added weight of heavier boats by properly fitting the curve of the keel, allowing easier launching and loading of boats. The Spool-Type Keel Roller is designed to support the keel of lighter boats.



807



805



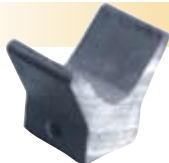
804

PART NO.	REF. NO.	ROLLER	TYPE	LENGTH	I.D.
803	404800	BOW	"V"	3"	1/2"
804	405000	KEEL	SPOOL	4"	5/8"
805	405200	KEEL	SPOOL	5"	5/8"
812	405400	KEEL	"V"	8"	5/8"
811	405600	KEEL W/STEEL SLEEVE INSERT	"V"	10"	5/8"
807	405800	KEEL W/STEEL SLEEVE INSERT	"V"	12"	5/8"

HARDWARE & CARGO CONTROL

## Rubber Bow Guards

The Rubber Bow Guard acts as a stop to protect and hold the bow of the boat when loading a boat onto a trailer. Attaches to the trailer's winch stand.



PART NO.	REF. NO.	WIDTH	HOLE I.D.
860	406000	2"	1/2"
862	406400	3"	1/2"