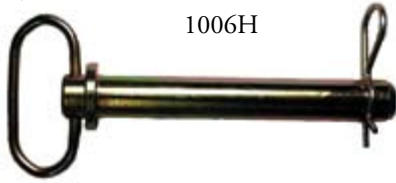


WALLACE
FORGE
COMPANY

Quality Since 1942

Hitch Pins

Hitch Pins are available in a variety of sizes for utility wagons, implements, etc., or when a locking pin is desired. All Hitch Pins come with keepers and replacement keepers are available. Plated to resist corrosion.



1006H

KEEPERS		
PART NO.	REF. NO.	SIZE
HPK3	321400	1 5/8" LONG
HPK4	321450	3 1/4" LONG
HPK9	321600	2 9/16" LONG

HITCH PINS W/KEEPER		
PART NO.	REF. NO.	SIZE
12H	320400	1/2" X 3 1/2"
58H	320600	5/8" X 4 1/2"
586H	320800	5/8" X 6"
34H	321000	3/4" X 4 1/2"
346H	321200	3/4" X 6"
1006H	321220	1" X 6"

WALLACE
FORGE
COMPANY

Quality Since 1942

Snapper Pins

Snapper Pins have many uses on equipment, trailers, couplers, pintles, etc. The quick connect and disconnect feature makes them easy to use. The double wire mechanism keeps it securely "locked" during use. Choose the square standard style or the round tab style. Plated to resist corrosion.



PART NO.	REF. NO.	DIA.	USABLE LENGTH	STYLE
14-134TR	321605	1/4"	1 3/4"	ROUND
14-134	321610	1/4"	1 3/4"	SQUARE
14-212TR	321613	1/4"	2 1/2"	ROUND
14-238	321616	1/4"	2 3/8"	SQUARE
516-134TR	321620	5/16"	1 3/4"	ROUND
516-214	321623	5/16"	2 1/4"	SQUARE
516-212TR	321627	5/16"	2 1/2"	ROUND
38-114	321632	3/8"	1 1/4"	SQUARE
38-200	321641	3/8"	2"	SQUARE
38-212TR	321646	3/8"	2 1/2"	ROUND

WALLACE
FORGE
COMPANY

Quality Since 1942

Linchpins

Manufactured from low carbon steel, the pin portion of the lynchpin has a Rockwell hardness Ra 50-60 with a 60kg load. The ring portion of the lynchpin is hot drawn spring steel. Zinc plated for corrosion resistance. Part LP716HD has a heavy duty ring.



PART NO.	REF. NO.	DIA.	USABLE LENGTH
LP316	321655	3/16"	1 3/8"
LP14	321658	1/4"	1 3/4"
LP516	321660	5/16"	1 3/4"
LP38	321663	3/8"	1 3/4"
LP716	321665	7/16"	1 3/4"
LP716HD	321667	7/16"	1 3/4"

Lanyards



These Lanyards have a variety of uses for your trailer needs, such as securing hitch pins, lynchpins and snapper pins to prevent loss. They are made of multi-strand aircraft cable, making them stronger than a single wire construction and resistant to breaking.

PART NO.	REF. NO.	LENGTH
2608	321240	8"
2612	321246	12"
2618	321252	18"

Weld-on Stake Pocket

Designed for use on flat bed trucks or trailers. Designed to accept standard 2" x 4" stakes.



PART NO.	REF. NO.	GAUGE	HEIGHT	I.D.
STKP34	404625	4	3"	1 5/8" X 3 1/2"
STKP34-8GA	404628	8	3"	1 5/8" X 3 1/2"

Tie Loops

Tie Loops can be used wherever a rope-tie or halter-tie is desired. Choose from brushed aluminum bolt-on or conventional weld-on styles. Part #38CL is a low profile design for use with safety chains.

PART NO.	REF. NO.	DESCRIPTION	INSIDE DIA.	LEG LENGTH
TL20012AB	404000	ALUMINUM, BOLT-ON ROUND	1/2"	2 1/4"
TL20012	404010	METAL, WELD-ON ROUND	1/2"	2"
TL21438	404015	METAL, WELD-ON SQUARE	3/8"	2 1/4"
38CL	404007	METAL, WELD-ON LOW PROFILE	3/8"	4 1/2"



D-Rings and Lashing Rings

A full range of sizes of D-Rings and Lashing Rings is available. Light duty for rope ties in cargo and horse/stock trailers or heavy duty for chains, etc. on equipment/flat bed trailers.

PART NO.	REF. NO.	RATED CAPACITY	DESCRIPTION
TL178AB	404004	N/R	1 7/8" I.D. RING W/BOLT-ON BKT, ALUM
DR14-15	404150	N/R	1/4" W/BOLT-ON MTG BKT, 1 1/8" X 1 1/8" I.D. W/1 3/8" HOLE CENTERS ON BKT
DR14-20	404200	1,200 LB	RECESSED ZINC-PLATED W/OVERALL DIM. OF 5" LONG, 3 1/2" WIDE & 3/8" DEEP
DR14-30	404245	N/R	4 1/5" O.D. SURFACE MNT W/PLASTIC TRIM, ZINC PLATED
DR14-30R	404250		TIE DOWN D-RING ZINC FOR DR14-30
DR14-30RM	404255		TIE DOWN D-RING MOUNT PLASTIC FOR DR14-30
DRB12-25	404300	4,000 WLL, 12,000 MBS	1/2" W/BOLT-ON MNTG BKT, 2 1/2" X 2 3/8" I.D. W/2" HOLE CENTERS ON BKT
DR58-3	404400	6,000 WLL, 19,000 MBS	5/8" DROP FORGED STEEL, 3" X 3" I.D. W/ WELD-ON MNTG BKT
DR10-3-4	404600	15,000 WLL, 47,000 MBS	1" DROP FORGED STEEL, 3" X 4" I.D. W/ WELD-ON MNTG BKT
RDR801	404605	6,000 LB	4 1/2" X 4 7/8" O.D. RECESSED BKT W/1 3/8" I.D. FORGED RING
RDR901	404610	6,000 LB	6 1/2" O.D. RECESSED RING, SWIVELS 360°, ZINC PLATED

NOTE: WLL = Working Load Limit; MBS = Minimum Breaking Strength

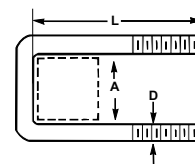


Packaged U-Bolts



PART NO.	REF. NO.	D	A	L
381344UB	404700	3/8"	1 3/4"	4"
382144UB	404705	3/8"	2 1/4"	4 1/4"
382385UB	404710	3/8"	2 3/8"	5 1/4"
383384UB	404715	3/8"	3 3/8"	4 1/4"
7162184UB	404730	7/16"	2 1/8"	4"
7163183UB	404735	7/16"	3 1/8"	3"
7163184UB	404740	7/16"	3 1/8"	4"
7164183UB	404745	7/16"	4 1/8"	3"
122185UB	404760	1/2"	2 1/8"	5 1/4"

Ideal for boat/pwc/snowmobile trailers, these u-bolts are zinc plated to resist corrosion. Square bend simplifies attachment of hardware to square trailer frames.



Rivet Tool

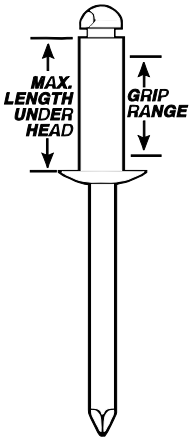
This is one of the best selling hand rivet tools in the industry. Features a square shoulder fulcrum pin of cold-formed heat-treated steel. This prevents pin rotation, which can elongate the engaging holes and cause premature tool failure with other rivet tools. Other quality features include: precision die-cast, high-strength aluminum alloy body, drop-forged carbon steel upper handle and thick, cushion-molded vinyl grips, for comfort. Sets up to 3/16" steel rivets and comes with four mounted nosepieces (3/32", 1/8", 5/32", and 3/16"), plus a service wrench.

PART NO.	REF. NO.	DESCRIPTION
39000	495600	HEAVY DUTY HAND RIVETER



Rivets

Determine which Rivet you need for the job by grip range. Rivets are designed to provide best fastening when used within the proper grip range. If the thickness of the material you are fastening varies, it is best to use more than one size rivet.



PART NO.	REF. NO.	RIVET DIA. / FLG DIA.	HOLE SIZE	DRILL NO.	MAX. LGTH UNDER HEAD	GRIP RANGE (INCHES)	QTY.
AD42ABS	386800	1/8"	.129 - .133	9/64"	.265	.032 - .125	500
AD44ABS	387000	1/8"	.129 - .133	9/64"	.390	.188 - .250	500
AD45ABS	387200	1/8"	.129 - .133	9/64"	.515	.313 - .375	500
AD46ABS	387400	1/8"	.129 - .133	9/64"	.515	.313 - .375	500
AD48ABS	387600	1/8"	.129 - .133	9/64"	.640	.376 - .500	500
AD54ABS	387700	5/32"	.160 - .164	11/64"	.465	.188 - .250	500
AD56ABS	387800	5/32"	.160 - .164	11/64"	.540	.251 - .375	500
AD64ABS	388200	3/16"	.192 - .196	13/64"	.440	.126 - .250	500
AD64ABSLF	388400	3/16" *	.192 - .196	13/64"	.440	.126 - .250	500
AD66ABS	388600	3/16"	.192 - .196	13/64"	.565	.251 - .375	500
SD66ABS	388700	STEEL 3/16"	.192 - .196	13/64"	.565	.251 - .375	500
AD66ABSLF	388800	3/16" *	.192 - .196	13/64"	.565	.251 - .375	500
AD68ABS	389000	3/16"	.192 - .196	13/64"	.690	.376 - .500	500
AD610ABS	389200	3/16"	.192 - .196	13/64"	.815	.501 - .625	500
AD610ABSLF	389400	3/16" *	.192 - .196	13/64"	.815	.501 - .625	500
AD612ABS	389600	3/16"	.192 - .196	13/64"	.940	.626 - .750	500
AD612ABSLF	389800	3/16" *	.192 - .196	13/64"	.940	.626 - .750	500

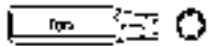
* Features 5/8" diameter large flange rivet head

Torx Screwdriver Bit and Holder

The Torx® Screw Driver Bit has a 1/4" hex drive and makes installing Torx® screws a simple task. For easier, faster floor screw installation, we now offer a 1/4" Hex Driver Bit holder for our TX430 floor screw bit. The driver bit is held securely in the holder by an internal ring retainer. The extended driver shaft can be mounted in any type drill chuck, making it easy to change Torx® bits and install floor screws.



TX430-3



PART NO.	REF. NO.	DESCRIPTION
TX430-3	489205	TORX® SCREW DRIVER BIT (PKG OF 3)
TX490	489210	1/4" TORX® SCREW BIT HOLDER (DRIVER BIT NOT INCL.)
TX425	489204	TORX® SCREW DRIVER BIT, FOR T25 WLS100 SCREW

Torx® Floor & Wall Liner Screws

Torx® Screws are the quick, easy and economical way to secure wood floors to trailers. Screws are 1/4" diameter, type "F" flat head, and feature self-tapping screw points. They require a 7/32" pilot hole. Some trailer builders have made the switch from CCA® treated wood to ACQ® (Alkaline Copper Quaternary) treated wood. The ACQ® treated wood appears to be more corrosive than expected. According to third party testing, zinc plating will not suffice. As a service to our customers using the new treated wood, we offer a floor screw with an approved plating material. You can expect 1000 hours of salt spray protection from these floor screws when used with ACQ® treated wood. They are less expensive than stainless steel, and have been shown by the plating manufacturer's test to outperform hot dipped galvanized when used in ACQ® treated wood.



TF02-250



Designed for ACQ® treated wood



Standard Screws

PART NO.	REF. NO.	DIA.	LENGTH	HEAD	TYPE
TFX150	386200	1 / 4"	1 1/2"	FLAT	STANDARD
TFX225	386400	1 / 4"	2 1/4"	FLAT	STANDARD
TFX250	386600	1 / 4"	2 1/2"	FLAT	STANDARD
TFX150ACQ	386205	1 / 4"	1 1/2"	FLAT	FOR ACQ TREATED WOOD
TFX225ACQ	386405	1 / 4"	2 1/4"	FLAT	FOR ACQ TREATED WOOD
TFX250ACQ	386605	1 / 4"	2 1/2"	FLAT	FOR ACQ TREATED WOOD
TF01-150	386250	PACKAGED FLOOR SCREWS, 1 / 4" X 1 1/2", (40 / PKG)			
TF01-225	386450	PACKAGED FLOOR SCREWS, 1 / 4" X 2 1/4", (40 / PKG)			
TF01-250	386650	PACKAGED FLOOR SCREWS, 1 / 4" X 2 1/2", (40 / PKG)			
WLS100	376939	WALL LINER SCREW 1" BLACK TORX WAFER SELF-DRILL			
TF02-150	386251	FLOOR SCREW, TORX HEAD 1/4" X 1.50" ACQ, 40PK			
TF02-225	386451	FLOOR SCREW, TORX HEAD 1/4" X 2.25" ACQ, 40PK			
TF02-250	386599	FLOOR SCREW TORX HEAD 1/4" X 2.50" ACQ, 40PK			